

ASCLEPIADOIDEAE (Apocynaceae)

ESPINHAÇO RANGE, Minas Gerais and Bahia, Brazil

Alessandro Rapini -- Universidade Estadual de Feira de Santana

Photos by Alessandro Rapini. Produced by R. Foster, Juliana Phillip & T. Wachter, with support from Ellen Hyndman fund & Andrew Mellon Foundation.
 © A. Rapini [rapinibot@yahoo.com.br] Departamento de Ciências Biológicas, UEFS, Feira de Santana, Bahia, Brazil. Supported by FAPESB & CNPq. (PQ-2 grant).
 © Environmental & Conservation Programs, The Field Museum, Chicago, IL 60605 USA. [rrc@fieldmuseum.org] [www.fnmh.org/plantguides/] **Rapid Color Guide # 19 version 3 08/2010**



1 *Asclepias curassavica*



2 *Asclepias curassavica*



3 *Asclepias curassavica*



4 *Asclepias mellodora*



5 *Barjonia chloraeifolia*



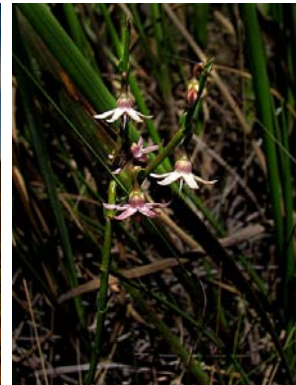
6 *Barjonia chloraeifolia*



7 *Barjonia erecta*



8 *Barjonia erecta*



9 *Barjonia harleyi*



10 *Barjonia harleyi*



11 *Barjonia laxa*



12 *Blepharodon ampliflorum*



13 *Blepharodon ampliflorum*



14 *Blepharodon ampliflorum*



15 *Blepharodon bicuspidatum*



16 *Blepharodon manicatum*



17 *Blepharodon manicatum*



18 *Blepharodon manicatum*



19 *Blepharodon pictum*



20 *Blepharodon pictum*

ASCLEPIADOIDEAE (Apocynaceae)

ESPINHAÇO RANGE, Minas Gerais and Bahia, Brazil

Alessandro Rapini -- Universidade Estadual de Feira de Santana

Photos by Alessandro Rapini. Produced by R. Foster, Juliana Phillip & T. Wachter, with support from Ellen Hyndman fund & Andrew Mellon Foundation.

© A. Rapini [rapinibot@yahoo.com.br] Departamento de Ciências Biológicas, UEFS, Feira de Santana, Bahia, Brazil. Supported by FAPESB & CNPq. (PQ-2 grant).

© Environmental & Conservation Programs, The Field Museum, Chicago, IL 60605 USA. [rrc@fieldmuseum.org] [www.fnmh.org/plantguides/] **Rapid Color Guide # 19 version 3** 08/2010



21 *Blepharodon pictum*



22 *Blepharodon pictum*



23 *Calotropis procera*



24 *Calotropis procera*



25 *Calotropis procera*



26 *Cynanchum roulinioides*



27 *Cynanchum roulinioides*



28 *Cynanchum roulinioides*



29 *Ditassa aequicymosa*



30 *Ditassa aequicymosa*



31 *Ditassa auriflora*



32 *Ditassa auriflora*



33 *Ditassa auriflora*



34 *Ditassa capillaris*



35 *Ditassa capillaris*



36 *Ditassa cipoensis*



37 *Ditassa cipoensis*



38 *Ditassa conceptionis*



39 *Ditassa conceptionis*



40 *Ditassa cordeiroana*

ASCLEPIADOIDEAE (Apocynaceae)

ESPINHAÇO RANGE, Minas Gerais and Bahia, Brazil

Alessandro Rapini -- Universidade Estadual de Feira de Santana

Photos by Alessandro Rapini. Produced by R. Foster, Juliana Phillip & T. Wachter, with support from Ellen Hyndman fund & Andrew Mellon Foundation.

© A. Rapini [rapinibot@yahoo.com.br] Departamento de Ciências Biológicas, UEFS, Feira de Santana, Bahia, Brazil. Supported by FAPESB & CNPq. (PQ-2 grant).

© Environmental & Conservation Programs, The Field Museum, Chicago, IL 60605 USA. [rc@fieldmuseum.org] [www.fmnh.org/plantguides/] **Rapid Color Guide # 19 version 3** 08/2010



41 *Ditassa cordeiroana*



42 *Ditassa cordeiroana*



43 *Ditassa eximia*



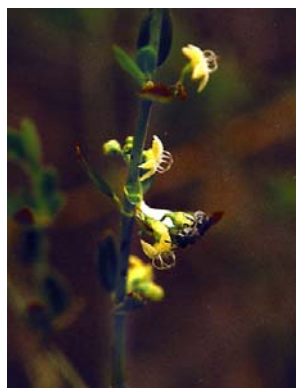
44 *Ditassa eximia*



45 *Ditassa eximia*



46 *Ditassa fasciculata*



47 *Ditassa fasciculata*



48 *Ditassa fasciculata*



49 *Ditassa glazioui*



50 *Ditassa glazioui*



51 *Ditassa glazioui*



52 *Ditassa hastata*



53 *Ditassa hastata*



54 *Ditassa hastata*



55 *Ditassa hispida*



56 *Ditassa hispida*



57 *Ditassa itambensis*



58 *Ditassa lenheirensis*



59 *Ditassa lenheirensis*



60 *Ditassa linearis*

ASCLEPIADOIDEAE (Apocynaceae)

ESPINHAÇO RANGE, Minas Gerais and Bahia, Brazil

Alessandro Rapini -- Universidade Estadual de Feira de Santana

Photos by Alessandro Rapini. Produced by R. Foster, Juliana Phillip & T. Wachter, with support from Ellen Hyndman fund & Andrew Mellon Foundation.

© A. Rapini [rapinibot@yahoo.com.br] Departamento de Ciências Biológicas, UEFS, Feira de Santana, Bahia, Brazil. Supported by FAPESB & CNPq. (PQ-2 grant).

© Environmental & Conservation Programs, The Field Museum, Chicago, IL 60605 USA. [rrc@fieldmuseum.org] [www.fmmh.org/plantguides/] **Rapid Color Guide # 19 version 3** 08/2010



61 *Ditassa linearis*



62 *Ditassa linearis*



63 *Ditassa longisepala*



64 *Ditassa longisepala*



65 *Ditassa longisepala*



66 *Ditassa melantha*



67 *Ditassa melantha*



68 *Ditassa mucronata*



69 *Ditassa mucronata*



70 *Ditassa obcordata*



71 *Ditassa pohliana*



72 *Ditassa pohliana*



73 *Ditassa pohliana*



74 *Ditassa retusa*



75 *Ditassa retusa*



76 *Ditassa retusa*



77 *Ditassa retusa*



78 *Ditassa rotundifolia*



79 *Ditassa rotundifolia*



80 *Ditassa succedanea*

ASCLEPIADOIDEAE (Apocynaceae)

ESPINHAÇO RANGE, Minas Gerais and Bahia, Brazil

Alessandro Rapini -- Universidade Estadual de Feira de Santana

Photos by Alessandro Rapini. Produced by R. Foster, Juliana Phillip & T. Wachter, with support from Ellen Hyndman fund & Andrew Mellon Foundation.
 © A. Rapini [rapinibot@yahoo.com.br] Departamento de Ciências Biológicas, UEFS, Feira de Santana, Bahia, Brazil. Supported by FAPESB & CNPq. (PQ-2 grant).
 © Environmental & Conservation Programs, The Field Museum, Chicago, IL 60605 USA. [rre@fieldmuseum.org] [www.fmnh.org/plantguides/] **Rapid Color Guide # 19 version 3 08/2010**



81 *Ditassa succedanea*



82 *Gomphocarpus physocarpus*



83 *Gomphocarpus physocarpus*



84 *Gonolobus parviflorus*



85 *Gonolobus parviflorus*



86 *Gonolobus parviflorus*



87 *Hemipogon abietoides*



88 *Hemipogon abietoides*



89 *Hemipogon acerosus*



90 *Hemipogon acerosus*



91 *Hemipogon carassensis*



92 *Hemipogon carassensis*



93 *Hemipogon carassensis*



94 *Hemipogon furlanii*



95 *Hemipogon furlanii*



96 *Hemipogon harleyi*



97 *Hemipogon harleyi*



98 *Hemipogon hatschbachii*



99 *Hemipogon hatschbachii*



100 *Hemipogon hemipogonoides*

ASCLEPIADOIDEAE (Apocynaceae)

ESPINHAÇO RANGE, Minas Gerais and Bahia, Brazil

Alessandro Rapini -- Universidade Estadual de Feira de Santana

Photos by Alessandro Rapini. Produced by R. Foster, Juliana Phillip & T. Wachter, with support from Ellen Hyndman fund & Andrew Mellon Foundation.

© A. Rapini [rapinibot@yahoo.com.br] Departamento de Ciências Biológicas, UEFS, Feira de Santana, Bahia, Brazil. Supported by FAPESB & CNPq. (PQ-2 grant).

© Environmental & Conservation Programs, The Field Museum, Chicago, IL 60605 USA. [rrc@fieldmuseum.org] [www.fmh.org/plantguides/] **Rapid Color Guide # 19 version 3 08/2010**



101 *Hemipogon hemipogonoides*



102 *Hemipogon hemipogonoides*



103 *Hemipogon luteus*



104 *Hemipogon luteus*



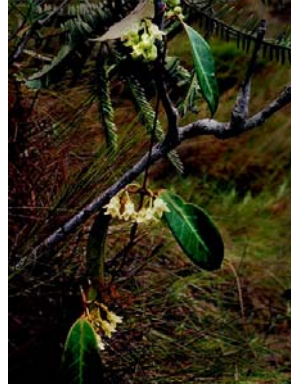
105 *Hemipogon luteus*



106 *Macroditassa adnata*



107 *Macroditassa adnata*



108 *Macroditassa macrophylla*



109 *Macroditassa macrophylla*



110 *Marsdenia altissima*



111 *Marsdenia hilariana*



112 *Marsdenia hilariana*



113 *Marsdenia suberosa*



114 *Marsdenia suberosa*



115 *Marsdenia zehntneri*



116 *Marsdenia zehntneri*



117 *Marsdenia zehntneri*



118 *Marsdenia endressiae*



119 *Marsdenia endressiae*



120 *Marsdenia endressiae*

ASCLEPIADOIDEAE (Apocynaceae)

ESPINHAÇO RANGE, Minas Gerais and Bahia, Brazil

Alessandro Rapini -- Universidade Estadual de Feira de Santana

Photos by Alessandro Rapini. Produced by R. Foster, Juliana Phillip & T. Wachter, with support from Ellen Hyndman fund & Andrew Mellon Foundation.

© A. Rapini [rapinibot@yahoo.com.br] Departamento de Ciências Biológicas, UEFS, Feira de Santana, Bahia, Brazil. Supported by FAPESB & CNPq. (PQ-2 grant).

© Environmental & Conservation Programs, The Field Museum, Chicago, IL 60605 USA. [rc@fieldmuseum.org] [www.fmnh.org/plantguides/] **Rapid Color Guide # 19 version 3** 08/2010



121 *Matelea ganglinosa*



122 *Matelea ganglinosa*



123 *Matelea harleyi*



124 *Matelea nigra*



125 *Matelea nigra*



126 *Matelea nigra*



127 *Matelea orthosiodes*



128 *Matelea orthosiodes*



129 *Matelea pedalis*



130 *Matelea pedalis*



131 *Metastelma giuliettianum*



132 *Metastelma giuliettianum*



133 *Metastelma harleyi*



134 *Metastelma harleyi*



135 *Metastelma myrtifolium*



136 *Metastelma myrtifolium*



137 *Metastelma myrtifolium*



138 *Minaria abortiva*



139 *Minaria abortiva*



140 *Minaria abortiva*

ASCLEPIADOIDEAE (Apocynaceae)

ESPINHAÇO RANGE, Minas Gerais and Bahia, Brazil

Alessandro Rapini -- Universidade Estadual de Feira de Santana

Photos by Alessandro Rapini. Produced by R. Foster, Juliana Phillip & T. Wachter, with support from Ellen Hyndman fund & Andrew Mellon Foundation.

© A. Rapini [rapinibot@yahoo.com.br] Departamento de Ciências Biológicas, UEFS, Feira de Santana, Bahia, Brazil. Supported by FAPESB & CNPq. (PQ-2 grant).

© Environmental & Conservation Programs, The Field Museum, Chicago, IL 60605 USA. [rrc@fieldmuseum.org] [www.fmnh.org/plantguides/] **Rapid Color Guide # 19 version 3** 08/2010



141 *Minaria acerosa*



142 *Minaria acerosa*



143 *Minaria acerosa*



144 *Minaria campanuliflora*



145 *Minaria campanuliflora*



146 *Minaria cordata*



147 *Minaria cordata*



148 *Minaria cordata*



149 *Minaria decussata*



150 *Minaria decussata*



151 *Minaria decussata*



152 *Minaria decussata*



153 *Minaria diamantinensis*



154 *Minaria diamantinensis*



155 *Minaria diamantinensis*



156 *Minaria ditassoides*



157 *Minaria ditassoides*



158 *Minaria ditassoides*



159 *Minaria grazielae*



160 *Minaria grazielae*

ASCLEPIADOIDEAE (Apocynaceae)

ESPINHAÇO RANGE, Minas Gerais and Bahia, Brazil

Alessandro Rapini -- Universidade Estadual de Feira de Santana

Photos by Alessandro Rapini. Produced by R. Foster, Juliana Phillip & T. Wachter, with support from Ellen Hyndman fund & Andrew Mellon Foundation.
 © A. Rapini [rapinibot@yahoo.com.br] Departamento de Ciências Biológicas, UEFS, Feira de Santana, Bahia, Brazil. Supported by FAPESB & CNPq. (PQ-2 grant).
 © Environmental & Conservation Programs, The Field Museum, Chicago, IL 60605 USA. [rre@fieldmuseum.org] [www.fmnh.org/plantguides/] **Rapid Color Guide # 19 version 3 08/2010**



161 *Minaria grazzielae*



162 *Minaria hemipogonoides*



163 *Minaria hemipogonoides*



164 *Minaria hemipogonoides*



165 *Minaria lourteigiae*



166 *Minaria lourteigiae*



167 *Minaria magisteriana*



168 *Minaria magisteriana*



169 *Minaria micromeria*



170 *Minaria parva*



171 *Minaria parva*



172 *Minaria parva*



173 *Minaria polygaloides*



174 *Minaria polygaloides*



175 *Minaria polygaloides*



176 *Minaria refractifolia*



177 *Minaria refractifolia*



178 *Minaria refractifolia*



179 *Minaria semirii*



180 *Minaria semirii*

ASCLEPIADOIDEAE (Apocynaceae)

ESPINHAÇO RANGE, Minas Gerais and Bahia, Brazil

Alessandro Rapini -- Universidade Estadual de Feira de Santana

Photos by Alessandro Rapini. Produced by R. Foster, Juliana Phillip & T. Wachter, with support from Ellen Hyndman fund & Andrew Mellon Foundation.

© A. Rapini [rapinibot@yahoo.com.br] Departamento de Ciências Biológicas, UEFS, Feira de Santana, Bahia, Brazil. Supported by FAPESB & CNPq. (PQ-2 grant).

© Environmental & Conservation Programs, The Field Museum, Chicago, IL 60605 USA. [rrc@fieldmuseum.org] [www.fmnh.org/plantguides/] **Rapid Color Guide # 19 version 3** 08/2010181 *Minaria semirii*182 *Nephradenia acerosa*183 *Nephradenia acerosa*184 *Nephradenia asparagoides*185 *Nephradenia asparagoides*186 *Orthosia scoparia*187 *Oxypetalum appendiculatum*188 *Oxypetalum appendiculatum*189 *Oxypetalum appendiculatum*190 *Oxypetalum banksii*191 *Oxypetalum banksii*192 *Oxypetalum erectum*193 *Oxypetalum erectum*194 *Oxypetalum erectum*195 *Oxypetalum erectum*196 *Oxypetalum erostre*197 *Oxypetalum erostre*198 *Oxypetalum foliosum*199 *Oxypetalum foliosum*200 *Oxypetalum foliosum*

ASCLEPIADOIDEAE (Apocynaceae)

ESPINHAÇO RANGE, Minas Gerais and Bahia, Brazil

Alessandro Rapini -- Universidade Estadual de Feira de Santana

Photos by Alessandro Rapini. Produced by R. Foster, Juliana Phillip & T. Wachter, with support from Ellen Hyndman fund & Andrew Mellon Foundation.
 © A. Rapini [rapinibot@yahoo.com.br] Departamento de Ciências Biológicas, UEFS, Feira de Santana, Bahia, Brazil. Supported by FAPESB & CNPq. (PQ-2 grant).
 © Environmental & Conservation Programs, The Field Museum, Chicago, IL 60605 USA. [rrc@fieldmuseum.org] [www.fmnh.org/plantguides/] **Rapid Color Guide # 19 version 3** 08/2010



201 *Oxypetalum glabrum*



202 *Oxypetalum glabrum*



203 *Oxypetalum harleyi*



204 *Oxypetalum insigne*



205 *Oxypetalum minarum*



206 *Oxypetalum minarum*



207 *Oxypetalum montanum*



208 *Oxypetalum montanum*



209 *Oxypetalum montanum*



210 *Oxypetalum pachyglossum*



211 *Oxypetalum pachyglossum*



212 *Oxypetalum pachygynum*



213 *Oxypetalum pachygynum*



214 *Oxypetalum polyanthum*



215 *Oxypetalum polyanthum*



216 *Oxypetalum polyanthum*



217 *Oxypetalum rusticum*



218 *Oxypetalum rusticum*



219 *Oxypetalum rusticum*



220 *Oxypetalum strictum*

ASCLEPIADOIDEAE (Apocynaceae)

ESPINHAÇO RANGE, Minas Gerais and Bahia, Brazil

Alessandro Rapini -- Universidade Estadual de Feira de Santana

Photos by Alessandro Rapini. Produced by R. Foster, Juliana Phillip & T. Wachter, with support from Ellen Hyndman fund & Andrew Mellon Foundation.
 © A. Rapini [rapinibot@yahoo.com.br] Departamento de Ciências Biológicas, UEFS, Feira de Santana, Bahia, Brazil. Supported by FAPESB & CNPq. (PQ-2 grant).
 © Environmental & Conservation Programs, The Field Museum, Chicago, IL 60605 USA. [rrc@fieldmuseum.org] [www.fmnh.org/plantguides/] **Rapid Color Guide # 19 version 3 08/2010**



221 *Oxypetalum strictum*



222 *Oxypetalum strictum*



223 *Oxypetalum warmingii*



224 *Oxypetalum warmingii*



225 *Oxypetalum wightianum*



226 *Oxypetalum wightianum*



227 *Oxypetalum wightianum*



228 *Peplonia organensis*



229 *Peplonia organensis*



230 *Schubertia grandiflora*



231 *Schubertia grandiflora*



232 *Schubertia grandiflora*



233 *Schubertia morilloana*



234 *Schubertia morilloana*



235 *Schubertia morilloana*



236 *Schubertia multiflora*



237 *Schubertia multiflora*



238 Espinhaço Landscape



239 Espinhaço Landscape

ASCLEPIADOIDEAE (Apocynaceae)

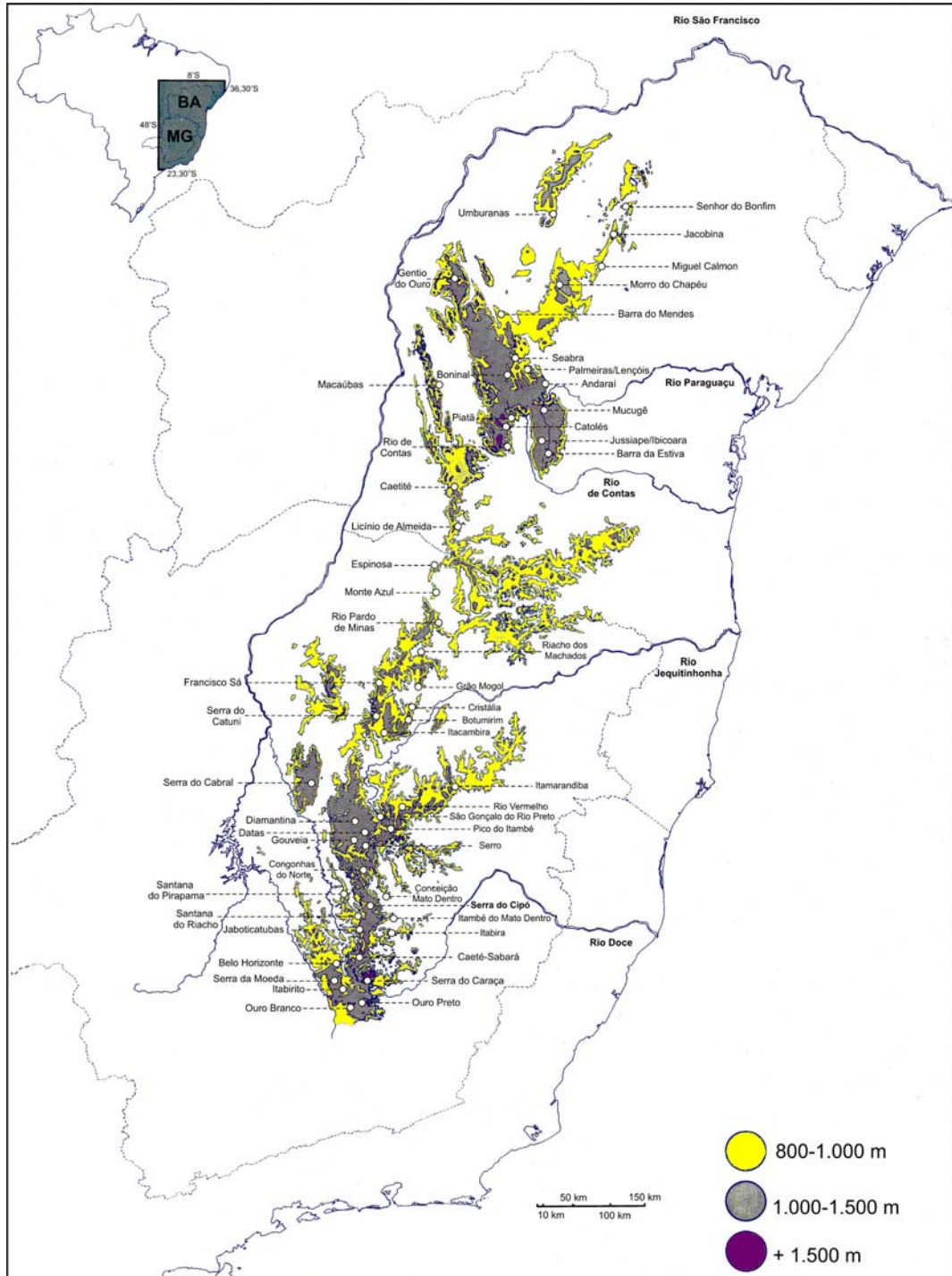
ESPINHAÇO RANGE, Minas Gerais and Bahia, Brazil

Alessandro Rapini -- Universidade Estadual de Feira de Santana

Photos by Alessandro Rapini. Produced by R. Foster, Juliana Phillip & T. Wachter, with support from Ellen Hyndman fund & Andrew Mellon Foundation.

© A. Rapini [rapinibot@yahoo.com.br] Departamento de Biologia, UEFS, Feira de Santana, Bahia. Supported by FAPESB & CNPq. (PQ-2 grant).

© Environmental & Conservation Programs, The Field Museum, Chicago, IL 60605 USA. [rrc@fieldmuseum.org] [www.fmmh.org/plantguides/] **Rapid Color Guide # 19 version 3 08/2010**



Espinhaço Range, States of Minas Gerais (MG) and Bahia (BA), Brazil (adapted from the 'Carta do Brasil ao Milionésimo', IBGE, 1972) with localities indicated.

ASCLEPIADOIDEAE (Apocynaceae)

ESPINHAÇO RANGE, Minas Gerais and Bahia, Brazil

Alessandro Rapini -- Universidade Estadual de Feira de Santana

Photos by Alessandro Rapini. Produced by R. Foster, Juliana Phillip & T. Wachter, with support from Ellen Hyndman fund & Andrew Mellon Foundation.
 © A. Rapini [rapinibot@yahoo.com.br] Departamento de Ciências Biológicas, UEFS, Feira de Santana, Bahia, Brazil. Supported by FAPESB & CNPq. (PQ-2 grant).
 © Environmental & Conservation Programs, The Field Museum, Chicago, IL 60605 USA. [rrc@fieldmuseum.org] [www.fnmh.org/plantguides/] **Rapid Color Guide # 19 version 3 08/2010**



Caraça



Diamantina



Ouro Branco



Serra da Piedade



Species of Asclepiadoideae from the Espinhaço Range (Minas Gerais - MG & Bahia - BA)

(Species in **bold** are represented in this guide)

- Araujia sericifera* Brot. [MG]
Asclepias candida Vell. [MG & BA]
Asclepias curassavica L. [MG & BA]
Asclepias mellodora A.St.-Hil. [MG & BA]
Barjonia chloraeifolia Decne. [MG & BA]
Barjonia erecta (Vell.) K.Schum. [MG & BA; endemic]
Barjonia glazioui Marquete [MG & BA]
Barjonia laxa Malme [BA]
Blepharodon ampliflorum E.Fourn. [MG & BA]
Blepharodon bicuspidatum E.Fourn. [MG]
Blepharodon lineare (Decne.) Decne. [MG]
Blepharodon manicatum (Decne.) Fontella [BA]
Blepharodon pictum (Vahl) W.D.Stevens [MG & BA]
Calotropis procera (Aiton) W.T.Aiton [MG & BA; subspontaneous]
Cynanchum montevidense Spreng. [MG & BA]
Cynanchum morrenioides Goyder [BA; endemic]
Cynanchum roulinioides (E.Fourn.) Rapini [MG & BA]
Ditassa aequicymosa E.Fourn. [MG; endemic]
Ditassa auriflora Rapini [MG; endemic]
Ditassa burchellii Hook. & Arn. [MG]
Ditassa capillaris E.Fourn. [BA]
Ditassa cipoensis (Fontella) Rapini [MG; endemic]
Ditassa conceptionis Fontella [MG]
Ditassa cordeiroana Fontella [MG; endemic]
Ditassa dardanoi T.U.P.Konno & Wanderley [BA]
Ditassa eximia Decne. [MG; endemic]
Ditassa fasciculata E.Fourn. [MG; endemic]
Ditassa glazioui E.Fourn. [MG & BA]
Ditassa hastata Decne. [MG & BA]
Ditassa hispida Fontella [MG & BA]
Ditassa itambensis Rapini [MG; endemic]
Ditassa laevis Mart. [MG; endemic]
Ditassa lenheirensis Silveira [MG & BA]
Ditassa leonii Fontella & T.U.P.Konno [MG]
Ditassa linearis Mart. [MG]
Ditassa longicaulis (E.Fourn.) Rapini [MG & BA; endemic]
Ditassa longisepala (Hua) Fontella & E.A.Schwarz [MG; endemic]
Ditassa melantha Silveria [MG & BA; endemic]
Ditassa mucronata Mart. [MG]
Ditassa obcordata Mart. [MG & BA]
Ditassa oxyphylla Turcz. [BA]
Ditassa pedunculata Malme [MG; endemic]
Ditassa pohliana E.Fourn. [MG & BA; endemic]
Ditassa retusa Mart. [MG & BA; endemic]
Ditassa rotundifolia (Decne) Baill. ex K.Schum. [BA]
Ditassa succedanea Rapini [MG & BA]
Ditassa tomentosa (Decne.) Fontella [MG]
Fisheria stellata (Vell.) E.Fourn. [MG? & BA]
Gomphocarpus physocarpus E.Mey. [MG; subspontaneous]
Gonolobus parviflorus Decne. [MG]
Gyrostelma oxypetaloides E.Fourn. [MG]
Hemipogon abietoides E.Fourn. [MG; endemic]
Hemipogon acerosus Decne. [MG & BA]
Hemipogon carassensis (Malme) Rapini [MG & BA]
Hemipogon furlanii (Fontella) Rapini [MG]
Hemipogon harleyi (Fontella) Goyder [BA; endemic]
Hemipogon hatschbachii (Fontella & Marquete) Rapini [MG; endemic]
Hemipogon hemipogonoides (Malme) Rapini [MG; endemic]
Hemipogon luteus E.Fourn. [MG; endemic]
Hemipogon piranii (Fontella) Rapini [MG; endemic]
Jobinia connivens (Hook. & Arn.) Malme [MG & BA]
Jobinia lindbergii E.Fourn. [BA]
Macroditassa adnata (E.Fourn.) Malme [MG & BA]
Macroditassa grandiflora (Silveira) Rapini [MG & BA]
Macroditassa macrophylla Malme [MG & BA]
Marsdenia altissima (Jacq.) Dugand [MG & BA]
Marsdenia hilariana E.Fourn. [BA]
Marsdenia suberosa (E.Fourn.) Malme [MG & BA]
Marsdenia zehntneri Fontella [BA]
Matelea denticulata (Vahl) Fontella & E.A.Schwarz [MG]
Matelea endressiae Goes & Fontella [BA]
Matelea ganglinosa (Vell.) Rapini [BA]
Matelea harleyi Fontella & Morillo [BA]
Matelea morilloana Fontella [BA]
Matelea nigra (Decne.) Morillo & Fontella [MG & BA]
Matelea orthosioides (E.Fourn.) Fontella [MG & BA]
Matelea pedalis (E.Fourn.) Fontella & E.A.Schwarz [MG & BA]
Metastelma giuliettianum Fontella [BA; endemic]
Metastelma harleyi Fontella [BA; endemic]
Metastelma myrtifolium Decne. [BA]
Minaria abortiva (E.Fourn.) Rapini [MG & BA]
Minaria acerosa (Mart.) T.U.P.Konno & Rapini [MG & BA]
Minaria bifurcata (Rapini) T.U.P.Konno & Rapini [MG; endemic]
Minaria campanuliflora Rapini [MG; endemic]
Minaria cordata (Turcz.) T.U.P.Konno & Rapini [BA]
Minaria decussata (Mart.) T.U.P.Konno & Rapini [MG & BA]
Minaria diamantinensis (Fontella) T.U.P.Konno & Rapini [MG; endemic]
Minaria ditassoides (Silveira) T.U.P.Konno & Rapini [MG; endemic]
Minaria grazielae (Fontella & Marquette) T.U.P.Konno & Rapini [MG; endemic]
Minaria hemipogonoides (E.Fourn.) T.U.P.Konno & Rapini [MG; endemic]
Minaria inconspicua (Rapini) Rapini [MG; endemic]
Minaria lourteigiae (Fontella) T.U.P.Konno & Rapini [MG; endemic]
Minaria magisteriana (Rapini) T.U.P.Konno & Rapini [MG; endemic]
Minaria micromeria (Decne.) T.U.P.Konno & Rapini [MG]
Minaria monacorona (Fontella) T.U.P.Konno & Rapini [MG; endemic]
Minaria parva (Silveira) T.U.P.Konno & Rapini [MG; endemic]
Minaria polygaloides (Silveira) T.U.P.Konno & Rapini [MG; endemic]
Minaria refractifolia (K.Schum.) T.U.P.Konno & Rapini [MG; endemic]
Minaria semirii (Fontella) T.U.P.Konno & Rapini [MG; endemic]
Nephradenia acerosa Decne. [MG]
Nephradenia asparagoides (Decne) E.Fourn [BA]
Orthosia scoparia (Nutt.) Liede & Meve [MG]
Oxypetalum appendiculatum Mart. [MG]
Oxypetalum arachnoideum E.Fourn. [MG & BA]
Oxypetalum banksii R.Br. ex Schult. [MG & BA]
Oxypetalum capitatum Mart. [MG & BA]
Oxypetalum erectum Mart. [MG]
Oxypetalum erostre E.Fourn. [MG & BA]
Oxypetalum foliosum Mart. [MG]
Oxypetalum glabrum (Decne.) Malme [MG]
Oxypetalum harleyi (Fontella & Goyder) Farinaccio [BA]
Oxypetalum insigne (Decne.) Malme [MG]
Oxypetalum jacobinae Decne. [MG & BA]
Oxypetalum lineare E.Fourn. [BA]
Oxypetalum martii E.Fourn. [MG & BA]
Oxypetalum minarum E.Fourn. [MG]
Oxypetalum montanum Mart. [MG & BA]
Oxypetalum pachyglossum Decne. [MG]
Oxypetalum pachygynum Decne. [MG]
Oxypetalum patulum E.Fourn. [MG]
Oxypetalum pilosum Gardner [MG?]
Oxypetalum polyanthum (Hoehne) Rapini [MG]
Oxypetalum rusticum Rapini [MG; endemic]
Oxypetalum strictum Mart. [MG & BA]
Oxypetalum warmingii (E.Fourn.) Fontella & Marquete [MG]
Oxypetalum wightianum Hook. & Arn. [MG]
Peplonia organensis (Malme) Fontella & Rapini [MG]
Schubertia grandiflora Mart. [BA]
Schubertia morilloana Fontella [BA]
Schubertia multiflora Mart. [BA]
Tassadia burchellii E.Fourn. [BA]
Tassadia propinqua Decne. [MG]