

ESEC Maracá-Jipioca, Amapá, Brazil

Birds of Estação Ecológica Maracá-Jipioca

1

Pedro Ferreira França, Juliana Gonçalves Corrêa and Carlos Eduardo Costa Campos

Photos by: Pedro Ferreira França (PF), Kurazo Mateus Okada Aguiar (KO), Edson Varga Lopes (EL) and José Augusto Alves (JA)
© França, Pedro Ferreira [francaornito@hotmail.com]; Universidade Federal do Oeste do Pará

[fieldguides.fieldmuseum.org] [1055] version 1 10/2018



English

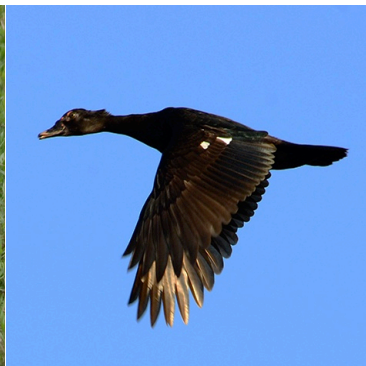
The Estação Ecológica (ESEC) Maracá-Jipioca is a coastal island located in Amapá, Brazil. The ESEC is formed by two islands: Maracá and Jipioca. Maracá (2°06'15.89"N, 50°28'36.77"W) is divided into two islands (North and South) separated by a channel called Igarapé do Inferno. The terrain is flat and has the following plant formations: floodplains, mangroves, bamboo forest and small areas of terra firme forest. We present photos of 135 birds species distributed among 43 families which were recorded at ESEC in the years 2014 and 2015.

Português

A Estação Ecológica (ESEC) Maracá-Jipioca é uma ilha costeira localizada no estado do Amapá, Brasil. A ESEC é composta por duas ilhas: Maracá e Jipioca. A ilha Maracá (2°06'15.89"N, 50°28'36.77"W) está dividida em duas ilhas (Norte e sul) separadas por um canal denominado localmente de Igarapé do Inferno. O relevo é de forma plana e possui as seguintes formações vegetais: campos inundáveis, mangues, floresta de bambu e pequenas áreas de floresta de terra firme. Aqui, apresentamos imagens de 135 espécies de aves distribuídas entre 43 famílias que foram registradas na ESEC nos anos de 2014 e 2015



1 *Anhima cornuta*
ANHIMIDAE (KO)



2 *Cairina moschata*
ANATIDAE (PF)



3 *Dendrocygna autumnalis*
ANATIDAE (PF)



4 *Ciconia maguari*
CICONIIDAE (PF)



5 *Jabiru mycteria*
CICONIIDAE (PF)



6 *Mycteria americana*
CICONIIDAE (PF)



7 *Fregata magnificens*
FREGATIDAE (PF)



8 *Nannopterum brasilianus*
PHALACROCORACIDAE (PF)

ESEC Maracá-Jipioca, Amapá, Brazil

Birds of Estação Ecológica Maracá-Jipioca

2

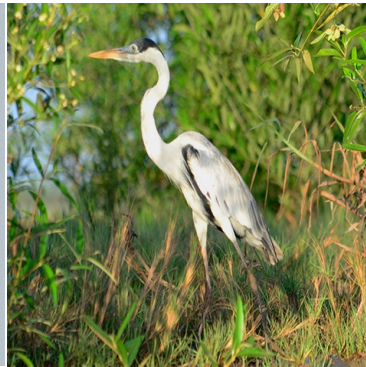
Pedro Ferreira França, Juliana Gonçalves Corrêa and Carlos Eduardo Costa Campos

Photos by: Pedro Ferreira França (PF), Kurazo Mateus Okada Aguiar (KO), Edson Varga Lopes (EL) and José Augusto Alves (JA)
© França, Pedro Ferreira [francaornito@hotmail.com]; Universidade Federal do Oeste do Pará

[fieldguides.fieldmuseum.org] [1055] version 1 10/2018



9 *Ardea alba*
ARDEIDAE (PF)



10 *Ardea cocoi*
ARDEIDAE (PF)



11 *Egretta caerulea*
ARDEIDAE (PF)



12 *Egretta thula*
ARDEIDAE (PF)



13 *Egretta tricolor*
ARDEIDAE (PF)



14 *Ptilerodius pileatus*
ARDEIDAE (PF)



15 *Bubulcus ibis*
ARDEIDAE (EL)



16 *Butorides striata*
ARDEIDAE (PF)



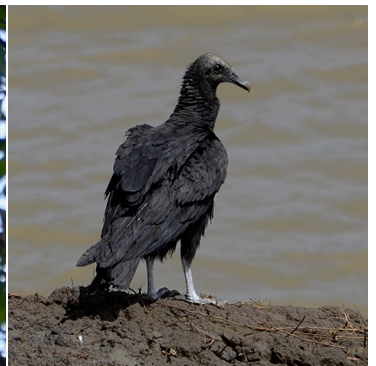
17 *Eudocimus ruber*
THRESKIORNITHIDAE (PF)



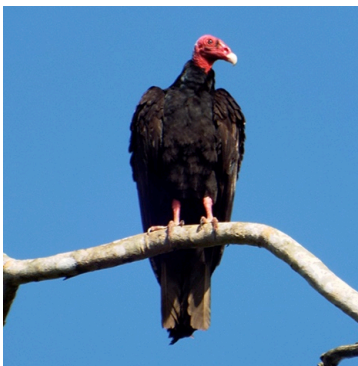
18 *Mesembrinibis cayennensis*
THRESKIORNITHIDAE (PF)



19 *Platalea ajaja*
THRESKIORNITHIDAE (PF)



20 *Coragyps atratus*
CATHARTIDAE (PF)



21 *Cathartes aura*
CATHARTIDAE (PF)



22 *Cathartes burrovianus*
CATHARTIDAE (PF)



23 *Pandion haliaetus*
PANDIONIDAE (PF)



24 *Rostrhamus sociabilis*
ACCIPITRIDAE (EL)

ESEC Maracá-Jipioca, Amapá, Brazil
Birds of Estação Ecológica Maracá-Jipioca

Pedro Ferreira França, Juliana Gonçalves Corrêa and Carlos Eduardo Costa Campos

Photos by: Pedro Ferreira França (PF), Kurazo Mateus Okada Aguiar (KO), Edson Varga Lopes (EL) and José Augusto Alves (JA)
© França, Pedro Ferreira [francaornito@hotmail.com]; Universidade Federal do Oeste do Pará

[fieldguides.fieldmuseum.org] [1055] version 1 10/2018



25 *Geranospiza caerulescens*
ACCIPITRIDAE (PF)



26 *Rupornis magnirostris*
ACCIPITRIDAE (PF)



27 *Heterospizias meridionalis*
ACCIPITRIDAE (KO)



28 *Buteogallus aequinoctialis*
ACCIPITRIDAE (PF)



29 *Urubitinga urubitinga*
ACCIPITRIDAE (PF)



30 *Busarellus nigricollis*
ACCIPITRIDAE (PF)



31 *Circus buffoni*
ACCIPITRIDAE (KO)



32 *Caracara cheriway*
FALCONIDAE (KO)



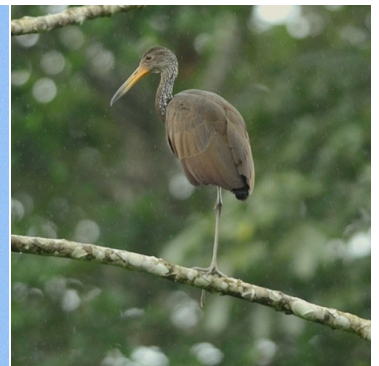
33 *Milvago chimachima*
FALCONIDAE (PF)



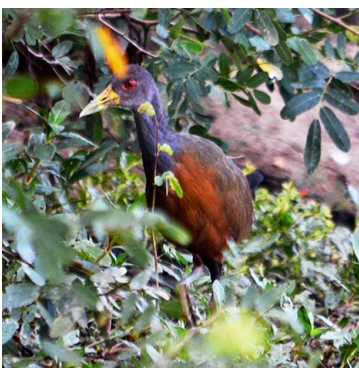
34 *Herpetotheres cachinnans*
FALCONIDAE (PF)



35 *Falco peregrinus*
FALCONIDAE (KO)



36 *Aramus guarauna*
ARAMIDAE (KO)



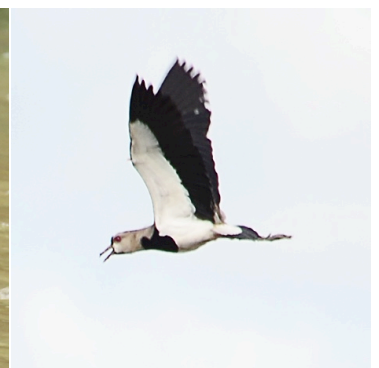
37 *Aramides cajaneus*
RALLIDAE (PF)



38 *Charadrius collaris*
CHARADRIIDAE (KO)



39 *Charadrius semipalmatus*
CHARADRIIDAE (PF)



40 *Vanellus chilensis*
CHARADRIIDAE (PF)

ESEC Maracá-Jipioca, Amapá, Brazil

Birds of Estação Ecológica Maracá-Jipioca

4

Pedro Ferreira França, Juliana Gonçalves Corrêa and Carlos Eduardo Costa Campos

Photos by: Pedro Ferreira França (PF), Kurazo Mateus Okada Aguiar (KO), Edson Varga Lopes (EL) and José Augusto Alves (JA)
© França, Pedro Ferreira [francaornito@hotmail.com]; Universidade Federal do Oeste do Pará

[fieldguides.fieldmuseum.org] [1055] version 1 10/2018



41 *Numenius phaeopus*
SCOLOPACIDAE (PF)



42 *Actitis macularius*
SCOLOPACIDAE (PF)



43 *Tringa melanoleuca*
SCOLOPACIDAE (PF)



44 *Tringa flavipes*
SCOLOPACIDAE (KO)



45 *Tringa solitaria*
SCOLOPACIDAE (PF)



46 *Arenaria interpres*
SCOLOPACIDAE (PF)



47 *Calidris alba*
SCOLOPACIDAE (KO)



48 *Calidris pusilla*
SCOLOPACIDAE (PF)



49 *Jacana jacana*
JACANIDAE (PF)



50 *Leucophaeus atricilla*
LARIDAE (PF)



51 *Phaetusa simplex*
STERNIDAE (PF)



52 *Sternula superciliaris*
STERNIDAE (PF)



53 *Anous minutus*
STERNIDAE (PF)



54 *Rynchops niger*
RYNCHOPIDAE (PF)



55 *Columbina passerina*
COLUMBIDAE (PF)



56 *Columbina talpacoti*
COLUMBIDAE (PF)

ESEC Maracá-Jipioca, Amapá, Brazil
Birds of Estação Ecológica Maracá-Jipioca

Pedro Ferreira França, Juliana Gonçalves Corrêa and Carlos Eduardo Costa Campos

Photos by: Pedro Ferreira França (PF), Kurazo Mateus Okada Aguiar (KO), Edson Varga Lopes (EL) and José Augusto Alves (JA)
© França, Pedro Ferreira [francaornito@hotmail.com]; Universidade Federal do Oeste do Pará

[fieldguides.fieldmuseum.org] [1055] version 1 10/2018



57 *Leptotila verreauxi*
COLUMBIDAE (KO)



58 *Leptotila rufaxilla*
COLUMBIDAE (EL)



59 *Patagioenas cayennensis*
COLUMBIDAE (PF)



60 *Crotophaga major*
CUCULIDAE (PF)



61 *Crotophaga ani*
CUCULIDAE (PF)



62 *Guira guira*
CUCULIDAE (PF)



63 *Tapera naevia*
CUCULIDAE (KO)



64 *Coccyzus minuta*
CUCULIDAE (PF)



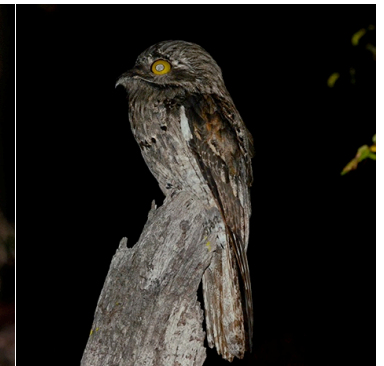
65 *Piaya cayana*
CUCULIDAE (PF)



66 *Megascops choliba*
STRIGIDAE (PF)



67 *Megascops watsonii*
STRIGIDAE (KO)



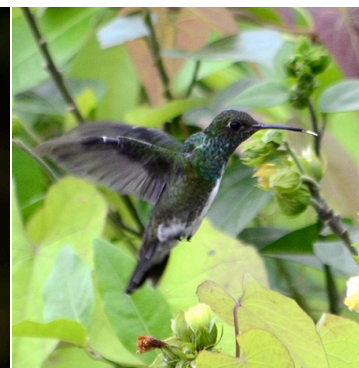
68 *Nyctibius griseus*
NYCTIBIIDAE (KO)



69 *Nyctidromus albicollis*
CAPRIMULGIDAE (PF)



70 *Hydropsalis maculicaudus*
CAPRIMULGIDAE (KO)



71 *Amazilia fimbriata*
TROCHILIDAE (PF)



72 *Amazilia leucogaster*
TROCHILIDAE (PF)

ESEC Maracá-Jipioca, Amapá, Brazil

Birds of Estação Ecológica Maracá-Jipioca

Pedro Ferreira França, Juliana Gonçalves Corrêa and Carlos Eduardo Costa Campos

Photos by: Pedro Ferreira França (PF), Kurazo Mateus Okada Aguiar (KO), Edson Varga Lopes (EL) and José Augusto Alves (JA)
 © França, Pedro Ferreira [francaornito@hotmail.com]; Universidade Federal do Oeste do Pará

[fieldguides.fieldmuseum.org] [1055] version 1 10/2018



73 *Chlorestes notata* ♂
TROCHILIDAE (KO)



74 *Chlorestes notata* ♀
TROCHILIDAE (KO)



75 *Chlorostilbon mellisugus* ♂
TROCHILIDAE (PF)



76 *Megaceryle torquata* ♂
ALCEDINIDAE (PF)



77 *Chloroceryle inda* ♂
ALCEDINIDAE (KO)



78 *Chloroceryle inda* ♀
ALCEDINIDAE (PF)



79 *Chloroceryle amazona* ♂
ALCEDINIDAE (PF)



80 *Chloroceryle amazona* ♀
ALCEDINIDAE (KO)



81 *Chloroceryle aenea* ♂
ALCEDINIDAE (PF)



82 *Chloroceryle aenea* ♀
ALCEDINIDAE (KO)



83 *Chloroceryle americana* ♂
ALCEDINIDAE (KO)



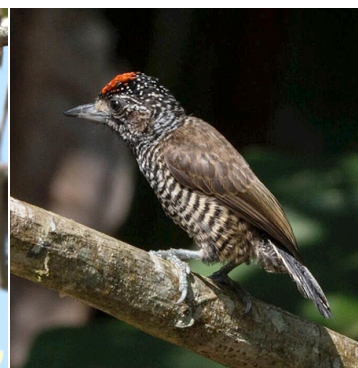
84 *Chloroceryle americana* ♀
ALCEDINIDAE (KO)



85 *Bucco tamatia*
BUCCONIDAE (PF)



86 *Ramphastos toco*
RAMPHASTIDAE (PF)



87 *Picumnus cirratus* ♂
PICIDAE (KO)



88 *Picumnus cirratus* ♀
PICIDAE (PF)

ESEC Maracá-Jipioca, Amapá, Brazil

Birds of Estação Ecológica Maracá-Jipioca

7

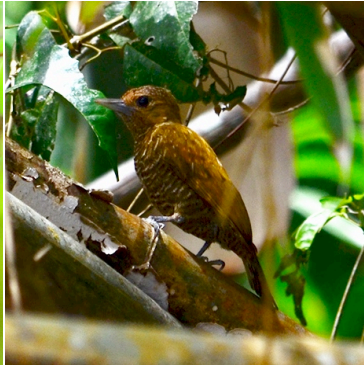
Pedro Ferreira França, Juliana Gonçalves Corrêa and Carlos Eduardo Costa Campos

Photos by: Pedro Ferreira França (PF), Kurazo Mateus Okada Aguiar (KO), Edson Varga Lopes (EL) and José Augusto Alves (JA)
 © França, Pedro Ferreira [francaornito@hotmail.com]; Universidade Federal do Oeste do Pará

[fieldguides.fieldmuseum.org] [1055] version 1 10/2018



89 *Veniliornis passerinus* ♂
PICIDAE (PF)



90 *Veniliornis passerinus* ♀
PICIDAE (PF)



91 *Dryocopus lineatus* ♂
PICIDAE (PF)



92 *Dryocopus lineatus* ♀
PICIDAE (PF)



93 *Campephilus melanoleucus*
PICIDAE ♂ (PF)



94 *Campephilus melanoleucus*
PICIDAE ♀ (PF)



95 *Brotogeris versicolurus*
PSITTACIDAE (PF)



96 *Brotogeris sanctithomae*
PSITTACIDAE (PF)



97 *Amazona amazonica*
PSITTACIDAE (PF)



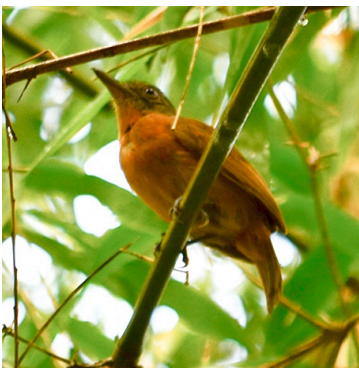
98 *Amazona ochrocephala*
PSITTACIDAE (PF)



99 *Graydidascalus brachyurus*
PSITTACIDAE (PF)



100 *Thamnophilus nigrocinereus*
THAMNOPHILIDAE ♂ (PF)



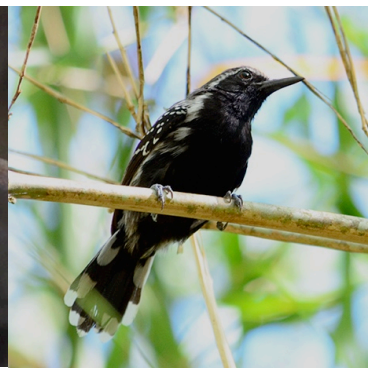
101 *Thamnophilus nigrocinereus*
THAMNOPHILIDAE ♀ (PF)



102 *Myrmotherula axillaris* ♂
THAMNOPHILIDAE (KO)



103 *Myrmotherula axillaris* ♀
THAMNOPHILIDAE (JA)



104 *Formicivora grisea* ♂
THAMNOPHILIDAE (PF)

ESEC Maracá-Jipioca, Amapá, Brazil
Birds of Estação Ecológica Maracá-Jipioca

Pedro Ferreira França, Juliana Gonçalves Corrêa and Carlos Eduardo Costa Campos

Photos by: Pedro Ferreira França (PF), Kurazo Mateus Okada Aguiar (KO), Edson Varga Lopes (EL) and José Augusto Alves (JA)
© França, Pedro Ferreira [francaornito@hotmail.com]; Universidade Federal do Oeste do Pará

[fieldguides.fieldmuseum.org] [1055] version 1 10/2018



105 *Formicivora grisea* ♀
THAMNOPHILIDAE (PF)



106 *Dendroplex picus*
DENDROCOLAPTIDAE (PF)



107 *Certhiaxis cinnamomeus*
FURNARIIDAE (PF)



108 *Todirostrum maculatum*
RHYNCHOCYCLIDAE (PF)



109 *Tolmomyias flaviventris*
RHYNCHOCYCLIDAE (PF)



110 *Myiopagis gaimardii*
TYRANNIDAE (KO)



111 *Myiopagis flavivertex*
TYRANNIDAE (KO)



112 *Elaenia flavogaster*
TYRANNIDAE (PF)



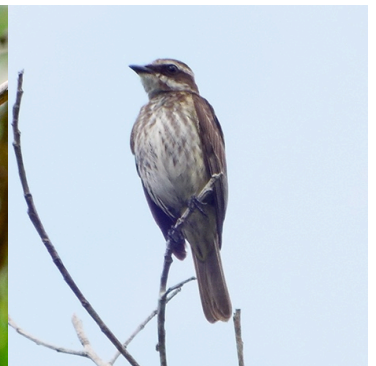
113 *Suiriri suiriri*
TYRANNIDAE (KO)



114 *Capsiempis flaveola*
TYRANNIDAE (KO)



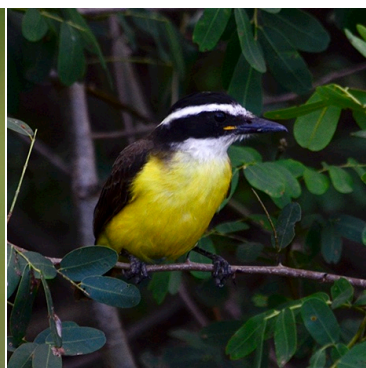
115 *Cnemotriccus fuscatus*
TYRANNIDAE (PF)



116 *Legatus leucophaeus*
TYRANNIDAE (PF)



117 *Myiozetetes cayanensis*
TYRANNIDAE (KO)



118 *Pitangus sulphuratus*
TYRANNIDAE (PF)



119 *Megarynchus pitangua*
TYRANNIDAE (EL)



120 *Myiodynastes maculatus*
TYRANNIDAE (PF)

ESEC Maracá-Jipioca, Amapá, Brazil
Birds of Estação Ecológica Maracá-Jipioca

Pedro Ferreira França, Juliana Gonçalves Corrêa and Carlos Eduardo Costa Campos

Photos by: Pedro Ferreira França (PF), Kurazo Mateus Okada Aguiar (KO), Edson Varga Lopes (EL) and José Augusto Alves (JA)
© França, Pedro Ferreira [francaornito@hotmail.com]; Universidade Federal do Oeste do Pará

[fieldguides.fieldmuseum.org] [1055] version 1 10/2018



121 *Tyrannus melancholicus*
TYRANNIDAE (PF)



122 *Myiarchus tuberculifer*
TYRANNIDAE (KO)



123 *Myiarchus swainsoni*
TYRANNIDAE (KO)



124 *Myiarchus tyrannulus*
TYRANNIDAE (EL)



125 *Myiarchus ferox*
TYRANNIDAE (KO)



126 *Attila spadiceus*
TYRANNIDAE (KO)



127 *Attila cinnamomeus*
TYRANNIDAE (PF)



128 *Hylophilus pectoralis*
VIREONIDAE (PF)



129 *Tachycineta albiventer*
HIRUNDINIDAE (PF)



130 *Hirundo rustica*
HIRUNDINIDAE (PF)



131 *Progne tapera*
HIRUNDINIDAE (PF)



132 *Progne chalybea*
HIRUNDINIDAE (KO)



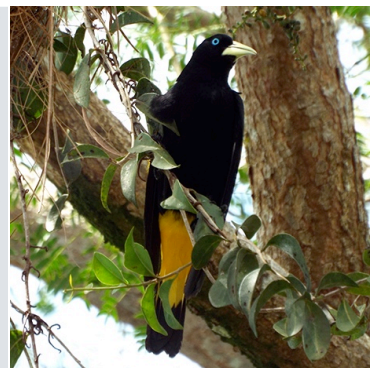
133 *Troglodytes musculus*
TROGLODYTIDAE (PF)



134 *Donacobius atricapilla*
DONACOBIIDAE (PF)



135 *Poliptila plumbea*
POLIPTILIDAE (PF)



136 *Cacicus cela*
ICTERIDAE (PF)

ESEC Maracá-Jipioca, Amapá, Brazil

Birds of Estação Ecológica Maracá-Jipioca

10

Pedro Ferreira França, Juliana Gonçalves Corrêa and Carlos Eduardo Costa Campos

Photos by: Pedro Ferreira França (PF), Kurazo Mateus Okada Aguiar (KO), Edson Varga Lopes (EL) and José Augusto Alves (JA)
 © França, Pedro Ferreira [francaornito@hotmail.com]; Universidade Federal do Oeste do Pará

[fieldguides.fieldmuseum.org] [1055] version 1 10/2018



137 *Sturnella militaris* ♂
ICTERIDAE (PF)



138 *Sturnella militaris* ♀
ICTERIDAE (PF)



139 *Gymnomystax mexicanus*
ICTERIDAE (PF)



140 *Setophaga petechia*
PARULIDAE (KO)



141 *Ramphocelus carbo* ♂
THRAUPIDAE (KO)



142 *Ramphocelus carbo* ♀
THRAUPIDAE (PF)



143 *Tangara episcopus*
THRAUPIDAE (PF)



144 *Tangara palmarum*
THRAUPIDAE (KO)



145 *Conirostrum bicolor*
THRAUPIDAE (KO)



146 *Conirostrum speciosum*
THRAUPIDAE (KO)



147 *Sporophila americana* ♂
THRAUPIDAE (PF)



148 *Sporophila americana* ♀
THRAUPIDAE (PF)



149 *Sporophila minuta* ♂
THRAUPIDAE (PF)



150 *Sporophila minuta* ♀
THRAUPIDAE (PF)



151 *Volatinia jacarina* ♂
THRAUPIDAE (PF)



152 *Volatinia jacarina* ♀
THRAUPIDAE (PF)