

Lower Negro River Basin, Amazonas - BRAZIL FLOWERS and FRUITS of WHITE-SAND VEGETATION

1

Francisco Farroñay & Alberto Vicentini

Instituto Nacional de Pesquisas da Amazônia (INPA)-Programa de Pós-Graduação em Botânica; Laboratório de Botânica Amazônica (LABOTAM), Av. André Araújo, 2.936, 69067-375, Manaus, AM, Brazil

Photos by Francisco Farroñay. Produced by: Francisco Farroñay © Francisco Farroñay [ffarro667@gmail.com].

Acknowledgments to CAPES for the fellowship, and CEMBAM-PPBIO Group for logistical support fieldguides.fieldmuseum.org]

[1129] version 1 2/2019



1 *Tapirira guianensis*
ANACARDIACEAE



2 *Annona nitida*
ANNONACEAE



3 *Annona nitida*
ANNONACEAE



4 *Duguetia surinamensis*
ANNONACEAE



5 *Duguetia surinamensis*
ANNONACEAE



6 *Guatteria schomburgkiana*
ANNONACEAE



7 *Guatteria schomburgkiana*
ANNONACEAE



8 *Guatteria* sp.
ANNONACEAE



9 *Guatteria* sp.
ANNONACEAE



10 *Xylopia benthamii*
ANNONACEAE



11 *Xylopia benthamii*
ANNONACEAE



12 *Aspidosperma verruculosum*
APOCYNACEAE



13 *Aspidosperma verruculosum*
APOCYNACEAE



14 *Ditassa buntingii*
APOCYNACEAE



15 *Galactophora crassifolia*
APOCYNACEAE



16 *Galactophora crassifolia*
APOCYNACEAE



17 *Mandevilla scabra*
APOCYNACEAE



18 *Tabernaemontana rupicola*
APOCYNACEAE



19 *Tabernaemontana rupicola*
APOCYNACEAE



20 *Ilex divaricata*
AQUIFOLIACEAE

Lower Negro River Basin, Amazonas - BRAZIL

FLOWERS and FRUITS of WHITE-SAND VEGETATION 2

Francisco Farroñay & Alberto Vicentini

Instituto Nacional de Pesquisas da Amazônia (INPA)-Programa de Pós-Graduação em Botânica; Laboratório de Botânica Amazônica (LABOTAM), Av. André Araújo, 2.936, 69067-375, Manaus, AM, Brazil

Photos by Francisco Farroñay. Produced by: Francisco Farroñay © Francisco Farroñay [ffarro667@gmail.com].
Acknowledgments to CAPES for the fellowship, and CEMBAM-PPBIO Group for logistical support

fieldguides.fieldmuseum.org]

[1129] version 1 2/2019



21 *Ilex divaricata*
AQUIFOLIACEAE



22 *Dendropanax resinosa*
ARALIACEAE



23 *Dendropanax resinosa*
ARALIACEAE



24 *Schefflera spruceana*
ARALIACEAE



25 *Schefflera spruceana*
ARALIACEAE



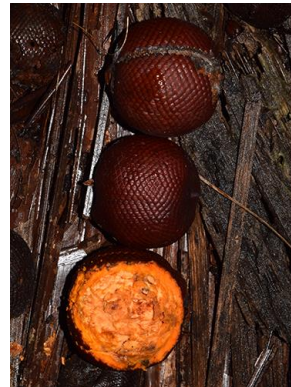
26 *Attalea microcarpa*
ARECACEAE



27 *Bactris campestris*
ARECACEAE



28 *Iriartella setigera*
ARECACEAE



29 *Mauritia carana*
ARECACEAE



30 *Gongylolepis martiana*
ASTERACEAE



31 *Gongylolepis martiana*
ASTERACEAE



32 *Lepidaploa arenaria*
ASTERACEAE



33 *Aechmea huebneri*
BROMELIACEAE



34 *Aechmea huebneri*
BROMELIACEAE



35 *Protium calanense*
BURSERACEAE



36 *Protium crassipetalum*
BURSERACEAE



37 *Protium hebetatum*
BURSERACEAE



38 *Protium heptaphyllum*
BURSERACEAE



39 *Protium paniculatum*
BURSERACEAE



40 *Couepia guianensis*
CHRYSOBALANACEAE

Lower Negro River Basin, Amazonas - BRAZIL

FLOWERS and FRUITS of WHITE-SAND VEGETATION

Francisco Farroñay & Alberto Vicentini

Instituto Nacional de Pesquisas da Amazônia (INPA)-Programa de Pós-Graduação em Botânica; Laboratório de Botânica Amazônica (LABOTAM), Av. André Araújo, 2.936, 69067-375, Manaus, AM, Brazil

Photos by Francisco Farroñay. Produced by: Francisco Farroñay © Francisco Farroñay [ffarro667@gmail.com].
Acknowledgments to CAPES for the fellowship, and CEMBAM-PPBIO Group for logistical support

fieldguides.fieldmuseum.org]

[1129] version 1 2/2019



41 *Couepia guianensis*
CHRYSOBALANACEAE



Co
uep
42 *Gaulettia racemosa*
CHRYSOBALANACEAE



43 *Gaulettia racemosa*
CHRYSOBALANACEAE



44 *Hirtella racemosa*
CHRYSOBALANACEAE



45 *Hirtella racemosa*
CHRYSOBALANACEAE



46 *Licania hypoleuca*
CHRYSOBALANACEAE



47 *Licania hypoleuca*
CHRYSOBALANACEAE



48 *Licania micrantha*
CHRYSOBALANACEAE



49 *Clusia nemorosa*
CLUSIACEAE



50 *Clusia nemorosa*
CLUSIACEAE



51 *Tovomitia schomburgkii*
CLUSIACEAE



52 *Dichorisandra hexandra*
COMMELINACEAE



53 *Doliocarpus* sp.
DILLENACEAE



54 *Alchornea discolor*
EUPHORBIACEAE



55 *Aparisthium cordatum*
EUPHORBIACEAE



56 *Conceveiba terminalis*
EUPHORBIACEAE



57 *Conceveiba terminalis*
EUPHORBIACEAE



58 *Croton spiraeifolius*
EUPHORBIACEAE



59 *Croton spiraeifolius*
EUPHORBIACEAE



60 *Mabea arenicola*
EUPHORBIACEAE

Lower Negro River Basin, Amazonas - BRAZIL

FLOWERS and FRUITS of WHITE-SAND VEGETATION

Francisco Farroñay & Alberto Vicentini

Instituto Nacional de Pesquisas da Amazônia (INPA)-Programa de Pós-Graduação em Botânica; Laboratório de Botânica Amazônica (LABOTAM), Av. André Araújo, 2.936, 69067-375, Manaus, AM, Brazil

Photos by Francisco Farroñay. Produced by: Francisco Farroñay © Francisco Farroñay [ffarro667@gmail.com].
Acknowledgments to CAPES for the fellowship, and CEMBAM-PPBIO Group for logistical support

fieldguides.fieldmuseum.org]

[1129] version 1 2/2019



61 *Mabea arenicola*
EUPHORBIACEAE



62 *Mabea* sp.
EUPHORBIACEAE



63 *Mabea* sp.
EUPHORBIACEAE



64 *Euphronia hirtelloides*
EUPHRONIACEAE



65 *Aldina heterophylla*
FABACEAE



66 *Aldina heterophylla*
FABACEAE



67 *Chamaecrista egleri*
FABACEAE



68 *Chamaecrista egleri*
FABACEAE



69 *Dimorphandra campinarum*
FABACEAE



70 *Dimorphandra campinarum*
FABACEAE



71 *Dimorphandra ignea*
FABACEAE



72 *Dimorphandra vernicosa*
FABACEAE



73 *Dimorphandra vernicosa*
FABACEAE



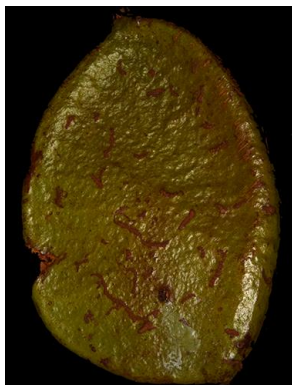
74 *Dicycme puncticulosa*
FABACEAE



75 *Dicycme puncticulosa*
FABACEAE



76 *Eperua glabriflora*
FABACEAE



77 *Eperua glabriflora*
FABACEAE



78 *Macrolobium arenarium*
FABACEAE



79 *Macrolobium arenarium*
FABACEAE



80 *Macrolobium discolor*
FABACEAE

Lower Negro River Basin, Amazonas - BRAZIL

FLOWERS and FRUITS of WHITE-SAND VEGETATION

Francisco Farroñay & Alberto Vicentini

Instituto Nacional de Pesquisas da Amazônia (INPA)-Programa de Pós-Graduação em Botânica; Laboratório de Botânica Amazônica (LABOTAM), Av. André Araújo, 2.936, 69067-375, Manaus, AM, Brazil

Photos by Francisco Farroñay. Produced by: Francisco Farroñay © Francisco Farroñay [ffarro667@gmail.com]. Acknowledgments to CAPES for the fellowship, and CEMBAM-PPBIO Group for logistical support

fieldguides.fieldmuseum.org]

[1129] version 1 2/2019



81 *Macrolobium duckeanum*
FABACEAE



82 *Macrolobium punctatum*
FABACEAE



83 *Macrolobium punctatum*
FABACEAE



84 *Macrolobium venulosum*
FABACEAE



85 *Macrolobium venulosum*
FABACEAE



86 *Ormosia discolor*
FABACEAE



87 *Parkia igneiflora*
FABACEAE



88 *Parkia igneiflora*
FABACEAE



89 *Peltogyne catingae*
FABACEAE



90 *Peltogyne catingae*
FABACEAE



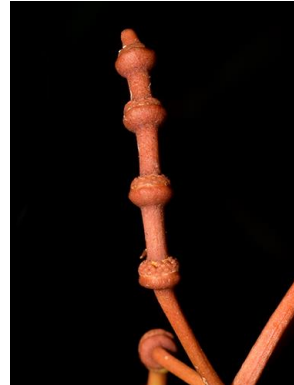
91 *Swartzia recurva*
FABACEAE



92 *Swartzia recurva*
FABACEAE



93 *Codonanthe crassifolia*
GESNERIACEAE



94 *Gnetum leyboldii*
GNETACEAE



95 *Gnetum leyboldii*
GNETACEAE



96 *Humiria balsamifera*
HUMIRIACEAE



97 *Humiria balsamifera*
HUMIRIACEAE



98 *Aniba* sp.
LAURACEAE



99 *Ocotea boissieriana*
LAURACEAE



100 *Ocotea* sp.
LAURACEAE

Lower Negro River Basin, Amazonas - BRAZIL

FLOWERS and FRUITS of WHITE-SAND VEGETATION

6

Francisco Farroñay & Alberto Vicentini

Instituto Nacional de Pesquisas da Amazônia (INPA)-Programa de Pós-Graduação em Botânica; Laboratório de Botânica Amazônica (LABOTAM), Av. André Araújo, 2.936, 69067-375, Manaus, AM, Brazil

Photos by Francisco Farroñay. Produced by: Francisco Farroñay © Francisco Farroñay [ffarro667@gmail.com].
Acknowledgments to CAPES for the fellowship, and CEMBAM-PPBIO Group for logistical support

fieldguides.fieldmuseum.org]

[1129] version 1 2/2019



101 *Rhodostemonodaphne crenaticupula*
LAURACEAE



102 *Roucheria columbiana*
LINACEAE



103 *Acmanthera minima*
MALPIGHIACEAE



104 *Acmanthera minima*
MALPIGHIACEAE



105 *Byrsonima amoena*
MALPIGHIACEAE



106 *Byrsonima amoena*
MALPIGHIACEAE



107 *Pachira duckei*
MALVACEAE



108 *Pachira duckei*
MALVACEAE



109 *Miconia* aff *argyrophylla*
MELASTOMATACEAE



110 *Miconia* aff *argyrophylla*
MELASTOMATACEAE



111 *Miconia* sp.
MELASTOMATACEAE



112 *Mouriri nervosa*
MELASTOMATACEAE



113 *Emmotum orbiculatum*
METTENIACEAE



114 *Emmotum orbiculatum*
METTENIACEAE



115 *Brosimum guainense*
MORACEAE



116 *Virola pavonis*
MYRISTICACEAE



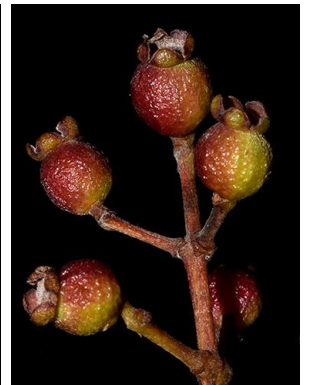
117 *Myrcia* cf. *citrifolia*
MYRTACEAE



118 *Myrcia* cf. *citrifolia*
MYRTACEAE



119 *Myrcia clusiifolia*
MYRTACEAE



120 *Myrcia clusiifolia*
MYRTACEAE

Lower Negro River Basin, Amazonas - BRAZIL

FLOWERS and FRUITS of WHITE-SAND VEGETATION

7

Francisco Farroñay & Alberto Vicentini

Instituto Nacional de Pesquisas da Amazônia (INPA)-Programa de Pós-Graduação em Botânica; Laboratório de Botânica Amazônica (LABOTAM), Av. André Araújo, 2.936, 69067-375, Manaus, AM, Brazil

Photos by Francisco Farroñay. Produced by: Francisco Farroñay © Francisco Farroñay [ffarro667@gmail.com].
Acknowledgments to CAPES for the fellowship, and CEMBAM-PPBIO Group for logistical support

fieldguides.fieldmuseum.org]

[1129] version 1 2/2019



121 *Myrcia grandis*
MYRTACEAE



122 *Myrcia servata*
MYRTACEAE



123 *Neea obovata*
NYCTAGINACEAE



124 *Neea obovata*
NYCTAGINACEAE



125 *Ouratea spruceana*
OCHNACEAE



126 *Chaenochiton angustifolium*
OLACACEAE



127 *Cattleya wallissii*
ORCHIDACEAE



128 *Caularthron bicornutum*
ORCHIDACEAE



129 *Encyclia mapurae*
ORCHIDACEAE



130 *Epidendrum nocturnum*
ORCHIDACEAE



131 *Epidendrum orchidiflorum*
ORCHIDACEAE



132 *Epidendrum orchidiflorum*
ORCHIDACEAE



133 *Maxillaria superflua*
ORCHIDACEAE



134 *Prosthechea aemula*
ORCHIDACEAE



135 *Prosthechea vespa*
ORCHIDACEAE



136 *Rodriguesia* sp.
ORCHIDACEAE



137 *Rudolfiella aurantiaca* sp.
ORCHIDACEAE



138 *Trigonidium* sp.
ORCHIDACEAE



139 *Ternstroemia dentata*
PENTAPHYLACACEAE



140 *Ternstroemia dentata*
PENTAPHYLACACEAE

Lower Negro River Basin, Amazonas - BRAZIL

FLOWERS and FRUITS of WHITE-SAND VEGETATION

Francisco Farroñay & Alberto Vicentini

Instituto Nacional de Pesquisas da Amazônia (INPA)-Programa de Pós-Graduação em Botânica; Laboratório de Botânica Amazônica (LABOTAM), Av. André Araújo, 2.936, 69067-375, Manaus, AM, Brazil

Photos by Francisco Farroñay. Produced by: Francisco Farroñay © Francisco Farroñay [ffarro667@gmail.com].
Acknowledgments to CAPES for the fellowship, and CEMBAM-PPBIO Group for logistical support

fieldguides.fieldmuseum.org]

[1129] version 1 2/2019



141 *Ternstroemia punctata*
PENTAPHYLACACEAE



142 *Ternstroemia punctata*
PENTAPHYLACACEAE



143 *Pogonophora schomburgkiana*
PERACEAE



144 *Coccoloba parimensis*
POLYGONACEAE



145 *Bredemeyera myrtifolia*
POLYGALACEAE



146 *Bredemeyera myrtifolia*
POLYGALACEAE



147 *Cybianthus amplus*
PRIMULACEAE



148 *Cybianthus amplus*
PRIMULACEAE



149 *Cybianthus fulvopulverulentus*
PRIMULACEAE



150 *Cybianthus guyanensis*
PRIMULACEAE



151 *Cybianthus guyanensis*
PRIMULACEAE



152 *Cybianthus spicatus*
PRIMULACEAE



153 *Rhabdodendron amazonicum*
RHABDODENDRACEAE



154 *Rhabdodendron amazonicum*
RHABDODENDRACEAE



155 *Rhabdodendron macrophyllum*
RHABDODENDRACEAE



156 *Rhabdodendron macrophyllum*
RHABDODENDRACEAE



157 *Carapichea panurensis*
RUBIACEAE



158 *Carapichea panurensis*
RUBIACEAE



159 *Ixora intensa*
RUBIACEAE



160 *Ixora intensa*
RUBIACEAE

Lower Negro River Basin, Amazonas - BRAZIL

FLOWERS and FRUITS of WHITE-SAND VEGETATION

Francisco Farroñay & Alberto Vicentini

Instituto Nacional de Pesquisas da Amazônia (INPA)-Programa de Pós-Graduação em Botânica; Laboratório de Botânica Amazônica (LABOTAM), Av. André Araújo, 2.936, 69067-375, Manaus, AM, Brazil

Photos by Francisco Farroñay. Produced by: Francisco Farroñay © Francisco Farroñay [ffarro667@gmail.com].
Acknowledgments to CAPES for the fellowship, and CEMBAM-PPBIO Group for logistical support

fieldguides.fieldmuseum.org]

[1129] version 1 2/2019



161 *Pagamea coriacea*
RUBIACEAE



162 *Pagamea coriacea*
RUBIACEAE



163 *Pagamea duckei*
RUBIACEAE



164 *Pagamea duckei*
RUBIACEAE



165 *Pagamea plicatiformis*
RUBIACEAE



166 *Pagamea plicatiformis*
RUBIACEAE



167 *Pagamea* sp.
RUBIACEAE



168 *Pagamea* sp.
RUBIACEAE



169 *Palicourea nitidella*
RUBIACEAE



170 *Palicourea nitidella*
RUBIACEAE



171 *Palicourea* sp.
RUBIACEAE



172 *Palicourea* sp.
RUBIACEAE



173 *Remijia amazonica*
RUBIACEAE



174 *Remijia amazonica*
RUBIACEAE



175 *Remijia hirsuta*
RUBIACEAE



176 *Remijia hirsuta*
RUBIACEAE



177 *Retiniphyllum concolor*
RUBIACEAE



178 *Retiniphyllum concolor*
RUBIACEAE



179 *Retiniphyllum schomburgkii*
RUBIACEAE



180 *Retiniphyllum schomburgkii*
RUBIACEAE

FLOWERS and FRUITS of WHITE-SAND VEGETATION

Francisco Farroñay & Alberto Vicentini

Instituto Nacional de Pesquisas da Amazônia (INPA)-Programa de Pós-Graduação em Botânica; Laboratório de Botânica Amazônica (LABOTAM), Av. André Araújo, 2.936, 69067-375, Manaus, AM, Brazil

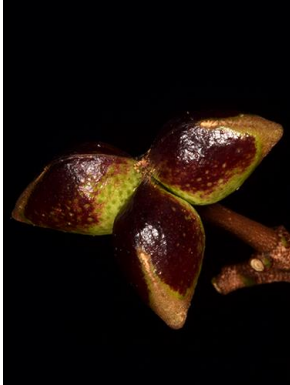
Photos by Francisco Farroñay. Produced by: Francisco Farroñay © Francisco Farroñay [ffarro667@gmail.com].
Acknowledgments to CAPES for the fellowship, and CEMBAM-PPBIO Group for logistical support

fieldguides.fieldmuseum.org]

[1129] version 1 2/2019



181 *Adiscanthus fusciflorus*
RUTACEAE



182 *Adiscanthus fusciflorus*
RUTACEAE



183 *Eucearea nitida*
SALICACEAE



184 *Eucearea nitida*
SALICACEAE



185 *Matayba opaca*
SAPINDACEAE



186 *Matayba opaca*
SAPINDACEAE



187 *Talisia ghilleana*
SAPINDACEAE



188 *Talisia ghilleana*
SAPINDACEAE



189 *Manilkara bidentata*
SAPOTACEAE



190 *Manilkara bidentata*
SAPOTACEAE



191 *Pradosia schomburgkiana*
SAPOTACEAE



192 *Schoepfia clarkii*
SCHOEFFIACEAE



193 *Schoepfia clarkii*
SCHOEFFIACEAE