

# Árvores Madeireiras do Acre, Brasil: um guia para os mateiros

Christopher Baraloto<sup>1</sup>, Francisco Walthier<sup>2</sup>, Evandro Ferreira<sup>3</sup>, Cara Rockwell<sup>4</sup>

<sup>1</sup>Dept. of Botany, e <sup>4</sup>School of For. Res. & Cons., U. of Florida, Gainesville, FL; <sup>2</sup>Centro dos Trabalhadores da Amazonia, e <sup>3</sup>U. Federal do Acre, Rio Branco, Acre, Brasil.  
© C. Baraloto, Dept. of Botany, Univ. of Florida, 32611 USA ([baraloto@botany.ufl.edu](mailto:baraloto@botany.ufl.edu)). Produzido por: R. B. Foster, S. Kaplan, com apoio de Moore Foundation.  
© Environmental & Conservation Programs, The Field Museum, Chicago, IL 60605 USA. [[www.fmnh.org/plantguides](http://www.fmnh.org/plantguides)][RRC@fmnh.org] Rapid Color Guide #187 versão 2



**Abiu letra**

*Pouteria* sp. 4 SAPOTACEAE



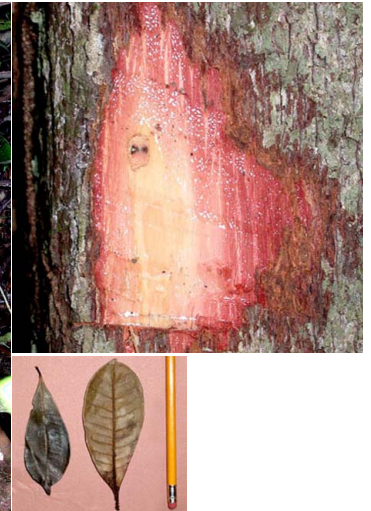
**Abiu rosa**

*Micropholis* sp. SAPOTACEAE



**Abiurana abiu**

*Pouteria* sp. 1 SAPOTACEAE



**Abiurana preta**

*Pouteria* sp. 2 SAPOTACEAE



**Abiurana roxo**

*Pouteria* cf. *gutta* SAPOTACEAE



**Amarelão**

*Aspidosperma parvifolium* APOCYNACEAE

# Árvores Madeireiras do Acre, Brasil: um guia para os mateiros

Christopher Baraloto<sup>1</sup>, Francisco Walthier<sup>2</sup>, Evandro Ferreira<sup>3</sup>, Cara Rockwell<sup>4</sup>

<sup>1</sup>Dept. of Botany, e <sup>4</sup>School of For. Res. & Cons., U. of Florida, Gainesville, FL; <sup>2</sup>Centro dos Trabalhadores da Amazonia, e <sup>3</sup>U. Federal do Acre, Rio Branco, Acre, Brasil.

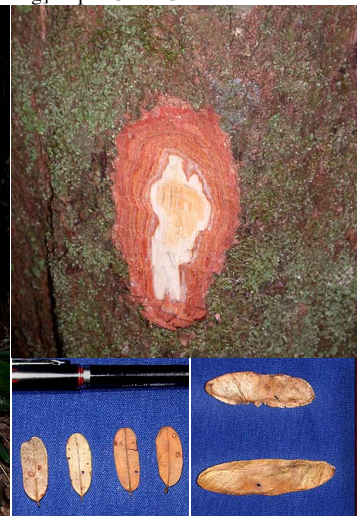
© C. Baraloto, Dept. of Botany, Univ. of Florida, 32611 USA ([baraloto@botany.ufl.edu](mailto:baraloto@botany.ufl.edu)). Produzido por: R. B. Foster, S. Kaplan, com apoio de Moore Foundation.

© Environmental & Conservation Programs, The Field Museum, Chicago, IL 60605 USA. [[www.fmnh.org/plantguides](http://www.fmnh.org/plantguides)][[RRC@fmnh.org](mailto:RRC@fmnh.org)] Rapid Color Guide #187 versão 2



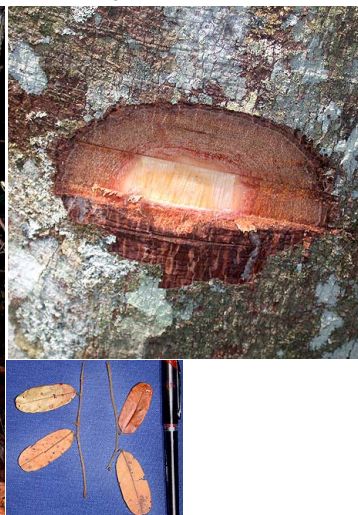
**Andiroba**

*Carapa guianensis* MELIACEAE



**Angelim amargoso**

*Hymenolobium* sp. 6 FABACEAE



**Angelim caju**

*Hymenolobium* sp. 5 FABACEAE



**Angelim da mata**

*Hymenolobium* sp. 1 FABACEAE



**Angelim pedra**

*Hymenolobium* sp. 2 FABACEAE



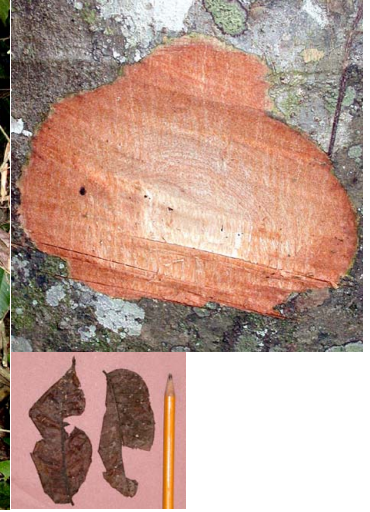
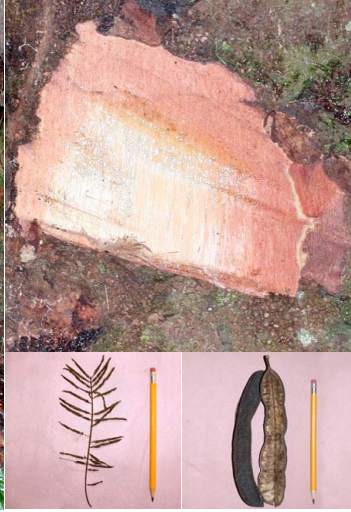
**Angelim preto**

*Hymenolobium* cf. *excelsum* FABACEAE

# Árvores Madeiras do Acre, Brasil: um guia para os mateiros

Christopher Baraloto<sup>1</sup>, Francisco Walthier<sup>2</sup>, Evandro Ferreira<sup>3</sup>, Cara Rockwell<sup>4</sup>

<sup>1</sup>Dept. of Botany, e <sup>4</sup>School of For. Res. & Cons., U. of Florida, Gainesville, FL; <sup>2</sup>Centro dos Trabalhadores da Amazonia, e <sup>3</sup>U. Federal do Acre, Rio Branco, Acre, Brasil.  
© C. Baraloto, Dept. of Botany, Univ. of Florida, 32611 USA ([baraloto@botany.ufl.edu](mailto:baraloto@botany.ufl.edu)). Produzido por: R. B. Foster, S. Kaplan, com apoio de Moore Foundation.  
© Environmental & Conservation Programs, The Field Museum, Chicago, IL 60605 USA. [[www.fmh.org/plantguides](http://www.fmh.org/plantguides)][RRC@fmh.org] Rapid Color Guide #187 versão 2



**Angico vermelho (Angelim saia)**  
*Parkia pendula* MIMOSACEAE

**Aroeira**  
*Astronium* sp. ANACARDIACEAE



**Aroeira preta (Muiracatiara)**  
*Astronium lecointei* ANACARDIACEAE

**Bálsamo**  
*Myroxylon balsamum* FABACEAE



**Bálsamo gris**  
*Myroxylon* sp. FABACEAE

**Breu vermelho**  
*Tetragastris altissima* BURSERACEAE

# Árvores Madeireiras do Acre, Brasil:

## um guia para os mateiros

Christopher Baraloto<sup>1</sup>, Francisco Walthier<sup>2</sup>, Evandro Ferreira<sup>3</sup>, Cara Rockwell<sup>4</sup>

<sup>1</sup>Dept. of Botany, e <sup>4</sup>School of For. Res. & Cons., U. of Florida, Gainesville, FL; <sup>2</sup>Centro dos Trabalhadores da Amazonia, e <sup>3</sup>U. Federal do Acre, Rio Branco, Acre, Brasil.

© C. Baraloto, Dept. of Botany, Univ. of Florida, 32611 USA ([baraloto@botany.ufl.edu](mailto:baraloto@botany.ufl.edu)). Produzido por: R. B. Foster, S. Kaplan, com apoio de Moore Foundation.

© Environmental & Conservation Programs, The Field Museum, Chicago, IL 60605 USA. [[www.fnmh.org/plantguides](http://www.fnmh.org/plantguides)][RRC@fnmh.org] Rapid Color Guide #187 versão 2



**Carapanaúba amarela**  
*Aspidosperma* sp. APOCYNACEAE



**Carapanaúba preta**  
*Aspidosperma megalocarpon* APOCYNACEAE



**Castanheira**  
*Bertholletia excelsa* LECYTHIDACEAE



**Catuába**  
*Qualea* cf. *tessmannii* VOCHYSIACEAE



**Caximbeiro**  
*Huberodendron swietenoides* BOMBACACEAE



**Cedrinho (Guaruba)**  
*Vochysia* sp. 1 VOCHYSIACEAE

# Árvores Madeireiras do Acre, Brasil: um guia para os mateiros

Christopher Baraloto<sup>1</sup>, Francisco Walthier<sup>2</sup>, Evandro Ferreira<sup>3</sup>, Cara Rockwell<sup>4</sup>

<sup>1</sup>Dept. of Botany, e <sup>4</sup>School of For. Res. & Cons., U. of Florida, Gainesville, FL; <sup>2</sup>Centro dos Trabalhadores da Amazonia, e <sup>3</sup>U. Federal do Acre, Rio Branco, Acre, Brasil.  
© C. Baraloto, Dept. of Botany, Univ. of Florida, 32611 USA ([baraloto@botany.ufl.edu](mailto:baraloto@botany.ufl.edu)). Produzido por: R. B. Foster, S. Kaplan, com apoio de Moore Foundation.  
© Environmental & Conservation Programs, The Field Museum, Chicago, IL 60605 USA. [[www.fmh.org/plantguides](http://www.fmh.org/plantguides)][RRC@fmh.org] Rapid Color Guide #187 versão 2



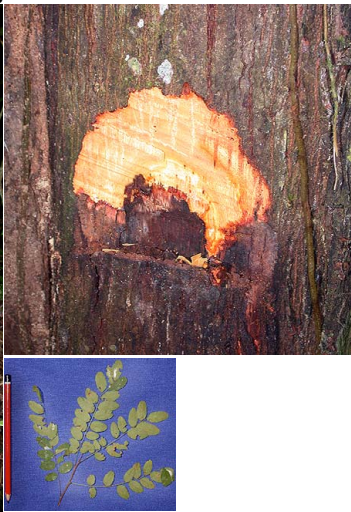
**Cedro rosa (Cedro vermelho)**  
*Cedrela cf. odorata* MELIACEAE

**Cerejeira (Imburana)**  
*Amburana cearensis* FABACEAE



**Copaiba branca**  
*Copaifera cf. multijuga* CAESALPINIACEAE

**Copaiba preta**  
*Copaifera cf. langsdorffii* CAESALPINIACEAE



**Coração de negro**  
*Vatairea sp.* FABACEAE

**Cumaru cetim (Grapaya)**  
*Apuleia leiocarpa* CAESALPINIACEAE

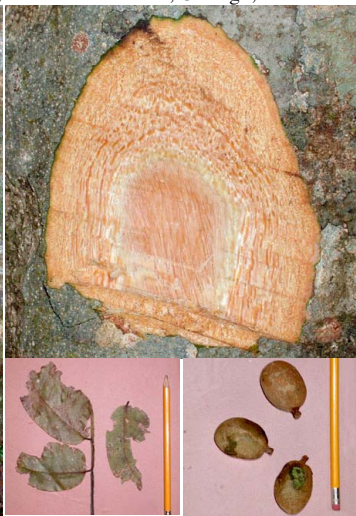
# Árvores Madeireiras do Acre, Brasil: um guia para os mateiros

Christopher Baraloto<sup>1</sup>, Francisco Walthier<sup>2</sup>, Evandro Ferreira<sup>3</sup>, Cara Rockwell<sup>4</sup>

<sup>1</sup>Dept. of Botany, e <sup>4</sup>School of For. Res. & Cons., U. of Florida, Gainesville, FL; <sup>2</sup>Centro dos Trabalhadores da Amazonia, e <sup>3</sup>U. Federal do Acre, Rio Branco, Acre, Brasil.

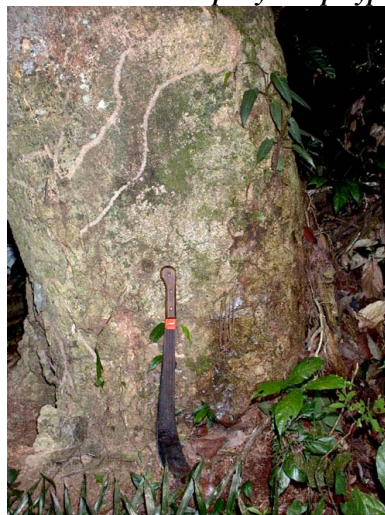
© C. Baraloto, Dept. of Botany, Univ. of Florida, 32611 USA ([baraloto@botany.ufl.edu](mailto:baraloto@botany.ufl.edu)). Produzido por: R. B. Foster, S. Kaplan, com apoio de Moore Foundation.

© Environmental & Conservation Programs, The Field Museum, Chicago, IL 60605 USA. [[www.fmnh.org/plantguides](http://www.fmnh.org/plantguides)][RRC@fmnh.org] Rapid Color Guide #187 versão 2



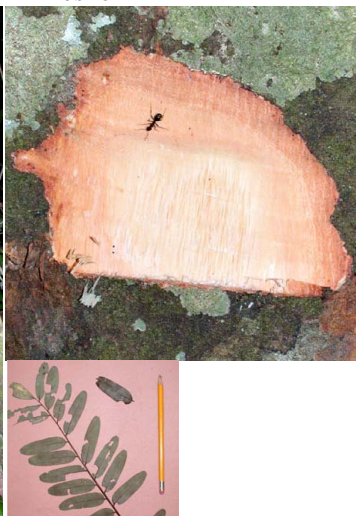
**Cumaru ferro**  
*Dipteryx* sp. FABACEAE

**Cumaruzinho (Pau sangue, Cumarurana)**  
*Dipteryx* cf. *polyphylla* FABACEAE



**Fava angico (Fava pe de arara)**  
*Parkia* cf. *nitida* MIMOSACEAE

**Fava orelhinha**  
*Enterolobium schomburgkii* MIMOSACEAE



**Favela preta**  
*Hymenolobium* sp. 3 FABACEAE

**Guaribeiro**  
*Barnebydendron* sp. CAESALPINIACEAE

# Árvores Madeireiras do Acre, Brasil: um guia para os mateiros

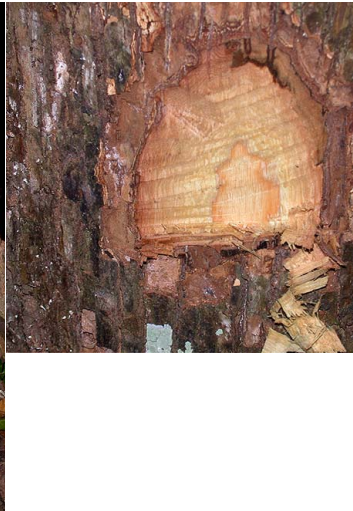
Christopher Baraloto<sup>1</sup>, Francisco Walthier<sup>2</sup>, Evandro Ferreira<sup>3</sup>, Cara Rockwell<sup>4</sup>

<sup>1</sup>Dept. of Botany, e <sup>4</sup>School of For. Res. & Cons., U. of Florida, Gainesville, FL; <sup>2</sup>Centro dos Trabalhadores da Amazonia, e <sup>3</sup>U. Federal do Acre, Rio Branco, Acre, Brasil.  
© C. Baraloto, Dept. of Botany, Univ. of Florida, 32611 USA ([baraloto@botany.ufl.edu](mailto:baraloto@botany.ufl.edu)). Produzido por: R. B. Foster, S. Kaplan, com apoio de Moore Foundation.  
© Environmental & Conservation Programs, The Field Museum, Chicago, IL 60605 USA. [[www.fnmh.org/plantguides](http://www.fnmh.org/plantguides)][[RRC@fnmh.org](mailto:RRC@fnmh.org)] Rapid Color Guide #187 versão 2



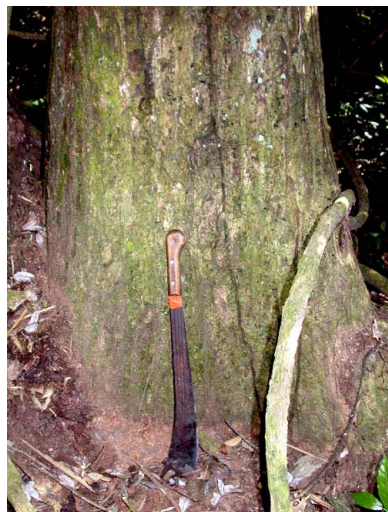
**Guariúba amarela**  
*Clarisia racemosa* MORACEAE

**Imbirindiba branca**  
*Buchenavia* sp. COMBRETACEAE



**Imbirindiba preta**  
COMBRETACEAE

**Ipê amarelo**  
*Tabebuia* cf. *serratifolia* BIGNONIACEAE



**Ipê roxo (pau d'arco)**  
*Tabebuia* cf. *impetiginosa* BIGNONIACEAE

**Itauba**  
*Mezilaurus itauba* LAURACEAE

# Árvores Madeireiras do Acre, Brasil:

## um guia para os mateiros

Christopher Baraloto<sup>1</sup>, Francisco Walthier<sup>2</sup>, Evandro Ferreira<sup>3</sup>, Cara Rockwell<sup>4</sup>

<sup>1</sup>Dept. of Botany, e <sup>4</sup>School of For. Res. & Cons., U. of Florida, Gainesville, FL; <sup>2</sup>Centro dos Trabalhadores da Amazonia, e <sup>3</sup>U. Federal do Acre, Rio Branco, Acre, Brasil.

© C. Baraloto, Dept. of Botany, Univ. of Florida, 32611 USA ([baraloto@botany.ufl.edu](mailto:baraloto@botany.ufl.edu)). Produzido por: R. B. Foster, S. Kaplan, com apoio de Moore Foundation.

© Environmental & Conservation Programs, The Field Museum, Chicago, IL 60605 USA. [[www.fmh.org/plantguides](http://www.fmh.org/plantguides)][RRC@fmh.org] Rapid Color Guide #187 versão 2

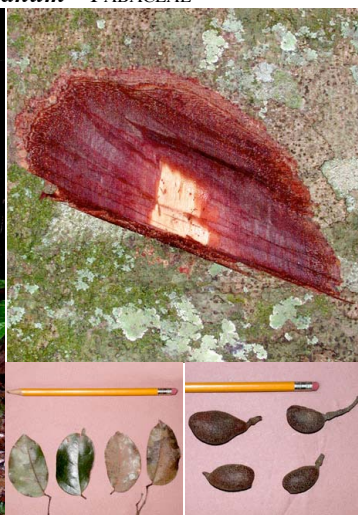


**Jacarandá**

*Dalbergia cf. spruceanum* FABACEAE

**Jatobá**

*Hymenaea courbaril* var. *subsessilis* CAESALPINIACEAE



**Jutai**

*Hymenaea parvifolia* CAESALPINIACEAE

**Jutai da folha grande**

*Hymenaea oblongifolia* var. *oblongifolia* CAESALPINIACEAE



**Maçaranduba**

*Manilkara surinamensis* SAPOTACEAE

**Manité**

*Brosimum cf. alicastrum* ssp. *bolivarense* MORACEAE



# Árvores Madeireiras do Acre, Brasil: um guia para os mateiros

Christopher Baraloto<sup>1</sup>, Francisco Walthier<sup>2</sup>, Evandro Ferreira<sup>3</sup>, Cara Rockwell<sup>4</sup>

<sup>1</sup>Dept. of Botany, e <sup>4</sup>School of For. Res. & Cons., U. of Florida, Gainesville, FL; <sup>2</sup>Centro dos Trabalhadores da Amazonia, e <sup>3</sup>U. Federal do Acre, Rio Branco, Acre, Brasil.

© C. Baraloto, Dept. of Botany, Univ. of Florida, 32611 USA ([baraloto@botany.ufl.edu](mailto:baraloto@botany.ufl.edu)). Produzido por: R. B. Foster, S. Kaplan, com apoio de Moore Foundation.

© Environmental & Conservation Programs, The Field Museum, Chicago, IL 60605 USA. [[www.fmnh.org/plantguides](http://www.fmnh.org/plantguides)][RRC@fmnh.org] Rapid Color Guide #187 versão 2



**Maparajuba amarela**  
*Pouteria* sp. 5 SAPOTACEAE



**Maparajuba branca (Abiu)**  
*Pouteria* cf. *bangii* SAPOTACEAE



**Marupá amarela**  
*Simarouba amara* SIMAROUBACEAE



**Marupá branca**  
*Jacaranda copaia* BIGNONIACEAE



**Maruparana**  
*Simarouba* sp. SIMAROUBACEAE



**Mogno**  
*Swietenia macrophylla* MELIACEAE

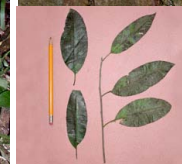
# Árvores Madeireiras do Acre, Brasil: um guia para os mateiros

Christopher Baraloto<sup>1</sup>, Francisco Walthier<sup>2</sup>, Evandro Ferreira<sup>3</sup>, Cara Rockwell<sup>4</sup>

<sup>1</sup>Dept. of Botany, e <sup>4</sup>School of For. Res. & Cons., U. of Florida, Gainesville, FL; <sup>2</sup>Centro dos Trabalhadores da Amazonia, e <sup>3</sup>U. Federal do Acre, Rio Branco, Acre, Brasil.

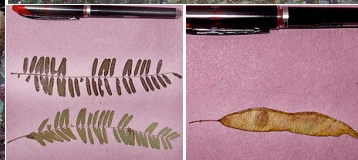
© C. Baraloto, Dept. of Botany, Univ. of Florida, 32611 USA ([baraloto@botany.ufl.edu](mailto:baraloto@botany.ufl.edu)). Produzido por: R. B. Foster, S. Kaplan, com apoio de Moore Foundation.

© Environmental & Conservation Programs, The Field Museum, Chicago, IL 60605 USA. [[www.fmn.org/plantguides](http://www.fmn.org/plantguides)][[RRC@fmnh.org](mailto:RRC@fmnh.org)] Rapid Color Guide #187 versão 2



**Muirapiranga**  
*Ormosia* sp. FABACEAE

**Pereiro casca laranja**  
*Aspidosperma* sp. APOCYNACEAE



**Pintadinho**  
*Poeppigia procera* CAESALPINIACEAE

**Pororoca (Muirapizuna, Juta-cica)**  
*Martiodendron elatum* var. *occidentale* CAESALPINIACEAE



**Quariquara branca**  
*Glycydendron amazonicum* EUPHORBIACEAE

**Quaricuara preta**  
*Minquartia guianensis* OLACACEAE

# Árvores Madeireiras do Acre, Brasil: um guia para os mateiros

Christopher Baraloto<sup>1</sup>, Francisco Walthier<sup>2</sup>, Evandro Ferreira<sup>3</sup>, Cara Rockwell<sup>4</sup>

<sup>1</sup>Dept. of Botany, e <sup>4</sup>School of For. Res. & Cons., U. of Florida, Gainesville, FL; <sup>2</sup>Centro dos Trabalhadores da Amazonia, e <sup>3</sup>U. Federal do Acre, Rio Branco, Acre, Brasil.  
© C. Baraloto, Dept. of Botany, Univ. of Florida, 32611 USA ([baraloto@botany.ufl.edu](mailto:baraloto@botany.ufl.edu)). Produzido por: R. B. Foster, S. Kaplan, com apoio de Moore Foundation.

© Environmental & Conservation Programs, The Field Museum, Chicago, IL 60605 USA. [[www.fmnh.org/plantguides](http://www.fmnh.org/plantguides)][[RRC@fmnh.org](mailto:RRC@fmnh.org)] Rapid Color Guide #187 versão 2



**Roxinho**

*Peltogyne* sp. CAESALPINIACEAE



**Roxinho da folha grande**

*Peltogyne* cf. *paniculatum* CAESALPINIACEAE



**Samauma branca**

*Ceiba pentandra* BOMBACACEAE



**Samauma preta**

BOMBACACEAE



**Seringueira**

*Hevea brasiliensis* EUPHORBIACEAE



**Sucupira amarela**

*Vatairea* cf. *paraensis* FABACEAE

# Árvores Madeireiras do Acre, Brasil:

## um guia para os mateiros

Christopher Baraloto<sup>1</sup>, Francisco Walthier<sup>2</sup>, Evandro Ferreira<sup>3</sup>, Cara Rockwell<sup>4</sup>

<sup>1</sup>Dept. of Botany, e <sup>4</sup>School of For. Res. & Cons., U. of Florida, Gainesville, FL; <sup>2</sup>Centro dos Trabalhadores da Amazonia, e <sup>3</sup>U. Federal do Acre, Rio Branco, Acre, Brasil.

© C. Baraloto, Dept. of Botany, Univ. of Florida, 32611 USA ([baraloto@botany.ufl.edu](mailto:baraloto@botany.ufl.edu)). Produzido por: R. B. Foster, S. Kaplan, com apoio de Moore Foundation.

© Environmental & Conservation Programs, The Field Museum, Chicago, IL 60605 USA. [[www.fnmh.org/plantguides](http://www.fnmh.org/plantguides)][RRC@fnmh.org] Rapid Color Guide #187 versão 2



**Sucupira preta**  
*Diptotropis* sp. FABACEAE

**Tamarinda**  
*Dialium guianense* CAESALPINIACEAE



**Tauari**  
*Couratari macrosperma* LECYTHIDACEAE

**Tauari churu (Corrimboque vermelho, Jaquitibá)**  
*Cariniana* sp. LECYTHIDACEAE



**Tauari roxo**  
*Couratari guianensis* LECYTHIDACEAE

**Violeta (Macacaúba)**  
*Platymiscium* sp. FABACEAE