

CHILE

Island Lady Beetles (Coleoptera: COCCINELLIDAE) of Chile

Guillermo González¹, Darko D. Cotoras², & Audrey Grez³¹Sociedad Chilena de Entomología, ²California Academy of Sciences & ³Universidad de Chile

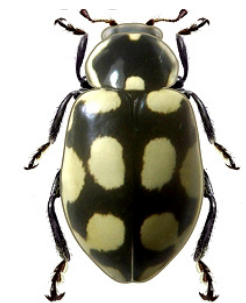
Photos: Guillermo González [willogonzalez@yahoo.com]. Produced by the authors with the assistance of Alicia Diaz, Field Museum.



© Guillermo González (2024) CC BY-NC 4.0. Licensed works are free to use share/remix with attribution, but commercial use of the original work is not permitted.

[fieldguides.fieldmuseum.org]

[979] version 1 4/2024

1 *Adalia angulifera*2 *Adalia bipunctata*3 *Adalia deficiens*4 *Adalia kuscheli*5 *Coccidophilus* sp.6 *Cranoryssus variegatus*7 *Cryptolaemus montrouzieri*8 *Cycloneda germainii*9 *Cycloneda limbicollis*10 *Cycloneda patagonica*11 *Eriopis chilensis*12 *Eriopis eschscholtzii*13 *Eriopis loaensis*14 *Eriopis magellanica*15 *Eriopis opposita*16 *Eriopis* sp.

Island Lady Beetles (Coleoptera: COCCINELLIDAE) of Chile

Guillermo González¹, Darko D. Cotoras², & Audrey Grez³¹Sociedad Chilena de Entomología, ²California Academy of Sciences & ³Universidad de Chile

Photos: Guillermo González [willogonzalez@yahoo.com]. Produced by the authors with the assistance of Alicia Diaz, Field Museum.



© Guillermo González (2024) CC BY-NC 4.0. Licensed works are free to use share/remix with attribution, but commercial use of the original work is not permitted.

[fieldguides.fieldmuseum.org]

[979] version 1 4/2024

17 *Eupaleoides chiloensis*18 *Harmonia axyridis*19 *Hippodamia convergens*20 *Hippodamia variegata*21 *Hyperaspis festiva*22 *Neorhizobius fuegensis*23 *Neoryssomus germainii*24 *Neoryssomus variabilis*25 *Nothocolus sicardi*26 *Nothocolus* sp.27 *Olla v-nigrum*28 *Orynipus chilensis*29 *Orynipus darwini*30 *Orynipus kuscheli*31 *Orynipus ultimensis*32 *Paracranoryssus chilianus*

CHILE

Island Lady Beetles (Coleoptera: COCCINELLIDAE) of Chile

Guillermo González¹, Darko D. Cotoras², & Audrey Grez³¹Sociedad Chilena de Entomología, ²California Academy of Sciences & ³Universidad de Chile

Photos: Guillermo González [willogonzalez@yahoo.com]. Produced by the authors with the assistance of Alicia Diaz, Field Museum.



© Guillermo González (2024) CC BY-NC 4.0. Licensed works are free to use share/remix with attribution, but commercial use of the original work is not permitted.

[fieldguides.fieldmuseum.org]

[979] version 1 4/2024

33 *Parasidis brethesi*34 *Parastethorus histrio*35 *Rhyzobius lophanthae*36 *Rhyzobius* sp.37 *Novius cardinalis*38 *Scymnus bicolor*39 *Scymnus loewii*40 *Stenadalia nigrodorsata*41 *Stictospilus darwini*

Reference: González G., Cotoras D.D. and Grez A. 2020. Annotated list of island lady beetles from Chile (Coleoptera: Coccinellidae). *Zootaxa* 4852: 501-526. Magnolia Press.

CHILE

Island Lady Beetles (Coleoptera: COCCINELLIDAE) of Chile

Guillermo González¹, Darko D. Cotoras², & Audrey Grez³

¹Sociedad Chilena de Entomología, ²California Academy of Sciences & ³Universidad de Chile

Photos: Guillermo González [willogonzalez@yahoo.com]. Produced by the authors with the assistance of Alicia Diaz, Field Museum.



© Guillermo González (2024) CC BY-NC 4.0. Licensed works are free to use share/remix with attribution, but commercial use of the original work is not permitted.

[fieldguides.fieldmuseum.org]

[979] version 1 4/2024

Coccinellid species reported from each island

Species List	Islas Desventuradas	Rapa Nui	Juan Fernández Archipiélago	Isla Mocha	Isla Tenglo	Isla Grande de Chiloé	Isla Guarello	Isla Riesco	Isla Grande de Tierra del Fuego	Isla Navarino
Endemic to one island										
<i>Eriopis opposita</i> (Guérin-Méneville, 1842)			X							
<i>Eupaleoides chiloensis</i> Gordon, 1994						X				
<i>Neorhizobius fuegensis</i> (Brèthes, 1925)									X	
<i>Nothocolus</i> sp.						X				
Endemic to Chile										
<i>Adalia kuscheli</i> Mader, 1957						X				
<i>Eriopis chilensis</i> Hofmann, 1970				X		X				
<i>Eriopis loaensis</i> González, 2014		X	X							
<i>Neoryssomus germainii</i> (Crotch, 1874)						X			X	
<i>Neoryssomus variabilis</i> (Korschefsky, 1934)				X						
<i>Orynipus ultimensis</i> Hofmann, 1972							X			
<i>Parasidis brethesi</i> Honour & González, 2010					X	X				
Native to Chile, non-endemic										
<i>Adalia angulifera</i> Mulsant, 1850			X			X				X
<i>Adalia deficiens</i> Mulsant, 1850			X			X				
<i>Cranorrysus variegatus</i> (Philippi & Philippi, 1864)					X	X				
<i>Cycloneda germainii</i> (Crotch, 1874)									X	
<i>Cycloneda limbicollis</i> (Fairmaire, 1844)						X			X	
<i>Cycloneda patagonica</i> González & Vandenberg, 2006									X	X
<i>Eriopis eschscholtzii</i> Mulsant, 1850									X	
<i>Eriopis magellanica</i> (Philippi & Philippi, 1864)								X	X	X
<i>Nothocolus sicardi</i> (Brèthes, 1925)					X	X		X		
<i>Olla v-nigrum</i> (Mulsant, 1866)		X								
<i>Orynipus chilensis</i> (Crotch, 1874)						X				
<i>Orynipus darwini</i> Brèthes, 1925					X	X				
<i>Orynipus kuscheli</i> Hofmann, 1972				X	X	X		X		X
<i>Paracranorrysus chilianus</i> (Mader, 1957)						X				
<i>Scymnus (Pullus) bicolor</i> (Germain, 1854)						X				
<i>Stenadalia nigrodorsata</i> (Fairmaire, 1884)								X		
<i>Stictospilus darwini</i> Brèthes, 1925					X	X				

CHILE

Island Lady Beetles (Coleoptera: COCCINELLIDAE) of Chile

Guillermo González¹, Darko D. Cotoras², & Audrey Grez³¹Sociedad Chilena de Entomología, ²California Academy of Sciences & ³Universidad de Chile

Photos: Guillermo González [willogonzalez@yahoo.com]. Produced by the authors with the assistance of Alicia Diaz, Field Museum.



© Guillermo González (2024) CC BY-NC 4.0. Licensed works are free to use share/remix with attribution, but commercial use of the original work is not permitted.

[fieldguides.fieldmuseum.org]

[979] version 1 4/2024

Species List	Islas Desventuradas	Rapa Nui	Juan Fernández Archipiélago	Isla Mocha	Isla Tenglo	Isla Grande de Chiloé	Isla Guarello	Isla Riesco	Isla Grande de Tierra del Fuego	Isla Navarino
Introduced to Chile										
<i>Adalia bipunctata</i> (Linnaeus 1758)		X	X							
<i>Cryptolaemus montrouzieri</i> (Mulsant, 1853)		X								
<i>Harmonia axyridis</i> (Pallas, 1772)		X	X	X		X				
<i>Hippodamia convergens</i> (Guérin-Méneville, 1842)									X	
<i>Hippodamia variegata</i> (Goeze, 1777)		X								
<i>Hyperaspis festiva</i> * Mulsant, 1850		X								
<i>Parastethorus histrio</i> (Chazeau 1974)		X	X							
<i>Rhyzobius lophanthae</i> (Blaisdell 1892)		X	X							
<i>Novius cardinalis</i> (Mulsant, 1850)		X								
<i>Scymnus (Pullus) loewii</i> Mulsant 1850		X								
Non defined status										
<i>Coccidophilus</i> sp.			X							
<i>Eriopsis</i> sp.	X									
<i>Heterodiomus</i> sp.		X								
<i>Rhyzobius</i> sp.			X							
Total species: 42, records: 68	1	12	10	4	6	18	1	4	8	4

* Introduced to Rapa Nui, but not in mainland Chile.