

GESNERIACEAE of the “Bilsa Biological Station” Reserva Ecológica Mache-Chindul, Esmeraldas Province, Western Ecuador

John L. Clark & Laura Clavijo

Produced in collaboration with The University of Alabama (Dept. of Biological Sciences) & Fundación Jatun Sacha (<http://www.jatunsacha.org>)

Photos by John L. Clark (jlc@ua.edu) – unless otherwise indicated

[fieldguides.fieldmuseum.org]

[692] version 1 07/2015



1 *Besleria tambensis*



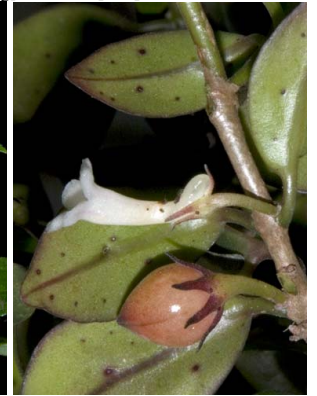
2 *Besleria tambensis*



3 *Chrysothemis friedrichsthaliana*



4 *Chrysothemis friedrichsthaliana*



5 *Codonanthispiss crassifolia*



6 *Codonanthispiss uleana*



7 *Codonanthispiss uleana*



8 *Columnnea angustata*



9 *Columnnea angustata*



10 *Columnnea angustata*



11 *Columnnea asteroloma*



12 *Columnnea asteroloma*



13 *Columnnea asteroloma*



14 *Columnnea eburnea*



15 *Columnnea eburnea*



16 *Columnnea eburnea*



17 *Columnnea eburnea*



18 *Columnnea eburnea*



19 *Columnnea kalbreyeriana*



20 *Columnnea kalbreyeriana*

Photo by Michael J. Kartuz

GESNERIACEAE of the “Bilsa Biological Station” Reserva Ecológica Mache-Chindul, Esmeraldas Province, Western Ecuador

John L. Clark & Laura Clavijo

Produced in collaboration with The University of Alabama (Dept. of Biological Sciences) & Fundación Jatun Sacha (<http://www.jatunsacha.org>)

Photos by John L. Clark (jlc@ua.edu) – unless otherwise indicated

[fieldguides.fieldmuseum.org]

[692] version 1 07/2015



21 *Columnnea kienastiana*



22 *Columnnea kienastiana*



23 *Columnnea kienastiana*

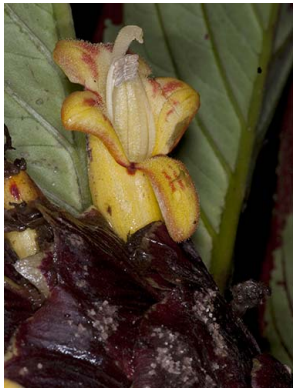
Photo by Laura Clavijo



24 *Columnnea medicinalis*



25 *Columnnea medicinalis*



26 *Columnnea medicinalis*



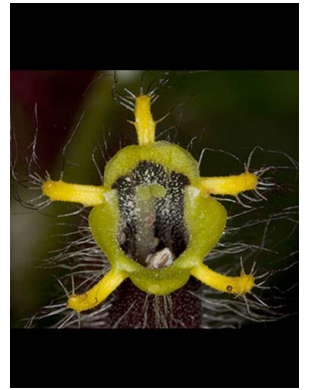
27 *Columnnea medicinalis*



28 *Columnnea minor*



29 *Columnnea minor*



30 *Columnnea minor*



31 *Columnnea minutiflora*



32 *Columnnea minutiflora*



33 *Columnnea minutiflora*



34 *Columnnea picta*



35 *Columnnea picta*



36 *Columnnea picta*



37 *Cremosperma* sp.



38 *Cremosperma* sp.



39 *Cremosperma* sp.



40 *Cremosperma* sp.

GESNERIACEAE of the “Bilsa Biological Station” Reserva Ecológica Mache-Chindul, Esmeraldas Province, Western Ecuador

John L. Clark & Laura Clavijo

Produced in collaboration with The University of Alabama (Dept. of Biological Sciences) & Fundación Jatun Sacha (<http://www.jatunsacha.org>)

Photos by John L. Clark (jlc@ua.edu) – unless otherwise indicated

[fieldguides.fieldmuseum.org]

[692] version 1 07/2015



41 *Diastema affine*



42 *Diastema affine*



43 *Diastema affine*



44 *Diastema scabrum*



45 *Diastema scabrum*



46 *Diastema scabrum*



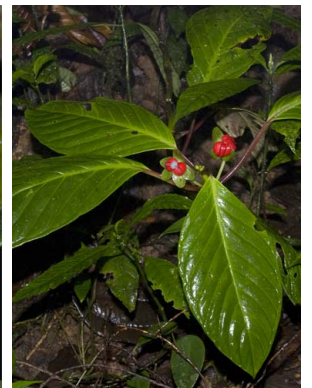
47 *Drymonia alloplectoides*



48 *Drymonia alloplectoides*



49 *Drymonia alloplectoides*



50 *Drymonia brochidodroma*



51 *Drymonia brochidodroma*



52 *Drymonia brochidodroma*



53 *Drymonia brochidodroma*



54 *Drymonia dodsonii*



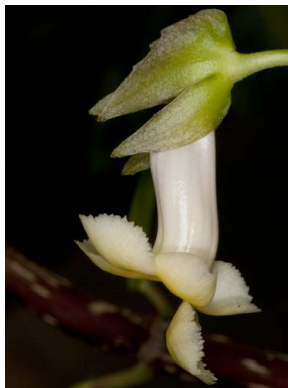
55 *Drymonia dodsonii*



56 *Drymonia dodsonii*



57 *Drymonia ecuadorensis*



58 *Drymonia ecuadorensis*



59 *Drymonia ecuadorensis*



60 *Drymonia laciniosa*

GESNERIACEAE of the “Bilsa Biological Station” Reserva Ecológica Mache-Chindul, Esmeraldas Province, Western Ecuador

John L. Clark & Laura Clavijo

Produced in collaboration with The University of Alabama (Dept. of Biological Sciences) & Fundación Jatun Sacha (<http://www.jatunsacha.org>)

Photos by John L. Clark (jlc@ua.edu) – unless otherwise indicated

[fieldguides.fieldmuseum.org]

[692] version 1 07/2015



61 *Drymonia laciniosa*



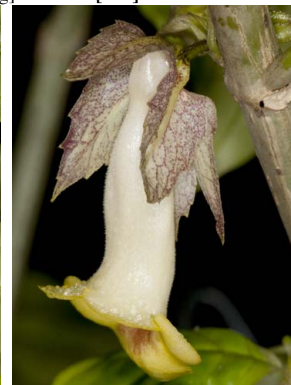
62 *Drymonia laciniosa*



63 *Drymonia laciniosa*



64 *Drymonia macrophylla*



65 *Drymonia macrophylla*



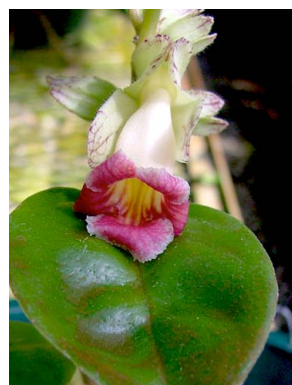
66 *Drymonia macrophylla*



67 *Drymonia macrophylla*



68 *Drymonia rhodoloma*



69 *Drymonia rhodoloma*



70 *Drymonia serrulata*



71 *Drymonia serrulata*



72 *Drymonia serrulata*



73 *Drymonia serrulata*



74 *Drymonia teuscheri*



75 *Drymonia teuscheri*



76 *Drymonia teuscheri*



77 *Drymonia teuscheri*



78 *Drymonia turrialvae*



79 *Drymonia turrialvae*



80 *Drymonia turrialvae*

GESNERIACEAE of the “Bilsa Biological Station” Reserva Ecológica Mache-Chindul, Esmeraldas Province, Western Ecuador

John L. Clark & Laura Clavijo

Produced in collaboration with The University of Alabama (Dept. of Biological Sciences) & Fundación Jatun Sacha (<http://www.jatunsacha.org>)

Photos by John L. Clark (jlc@ua.edu) – unless otherwise indicated

[fieldguides.fieldmuseum.org]

[692] version 1 07/2015



81 *Drymonia turrialvae*



82 *Drymonia warscewicziana*



83 *Drymonia warscewicziana*



84 *Drymonia warscewicziana*



85 *Gasteranthus calcaratus*



86 *Gasteranthus calcaratus*



87 *Gasteranthus calcaratus*



88 *Gasteranthus crispus*



89 *Gasteranthus crispus*



90 *Gasteranthus crispus*



91 *Gasteranthus tenellus*



92 *Gasteranthus tenellus*



93 *Gasteranthus tenellus*



94 *Gasteranthus tenellus*



95 *Gasteranthus villosus*



96 *Gasteranthus villosus*



97 *Gasteranthus villosus*



98 *Kohleria inaequalis*



99 *Kohleria inaequalis*



100 *Kohleria inaequalis*

GESNERIACEAE of the "Bilsa Biological Station"

Reserva Ecológica Mache-Chindul, Esmeraldas Province, Western Ecuador

John L. Clark & Laura Clavijo

Produced in collaboration with The University of Alabama (Dept. of Biological Sciences) & Fundación Jatun Sacha (<http://www.jatunsacha.org>)

Photos by John L. Clark (jlc@ua.edu) – unless otherwise indicated

[fieldguides.fieldmuseum.org]

[692] version 1 07/2015



101 *Kohleria spicata*



102 *Kohleria spicata*



103 *Kohleria spicata*



104 *Kohleria spicata*



105 *Kohleria villosa*



106 *Kohleria villosa*



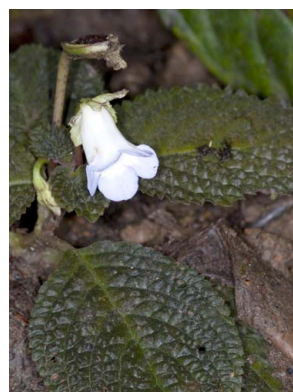
107 *Kohleria villosa*



108 *Napeanthus robustus*



109 *Napeanthus robustus*



110 *Nomopyle dodsonii*



111 *Nomopyle dodsonii*



112 *Nomopyle dodsonii*



113 *Paradymonia binata*
Photo by Leslie Brothers



114 *Paradymonia binata*
Photo by Leslie Brothers



115 *Paradymonia hypocyrtia*



116 *Paradymonia hypocyrtia*



117 *Paradymonia hypocyrtia*



118 *Reldia longipedunculata*



119 *Reldia longipedunculata*



120 *Reldia longipedunculata*