

Macroinvertebrates of rivers and creeks along the interoceanic Highway

¹Bern Sweeney, ¹David Funk, ²R. Wills Flowers, ³Therany Gonzales y ⁴Ana Huamantinco

¹STROUD Water Research Center, ²Florida A&M University, ³The Amazon Center for Environmental Education and Research - ACEER-Peru, ⁴Universidad Nacional Mayor de San Marcos, Perú
 Photos: David Funk. Identifications: R. Wills Flowers. Produced by: ACEER in association with the STROUD Water Research Center.
 Thanks to the Amazon Center for Environmental Education and Research - ACEER Foundation
 © David Funk [dfunk@stroudcenter.org]

[fieldguides.fieldmuseum.org] [843] version 1 02/2017



1 *Baetodes*

Ephemeroptera BAETIDAE



2 *Baetodes*

Ephemeroptera BAETIDAE



3 *Baetodes*

Ephemeroptera BAETIDAE



4 *Andesiops*

Ephemeroptera BAETIDAE



5 *Andesiops*

Ephemeroptera BAETIDAE



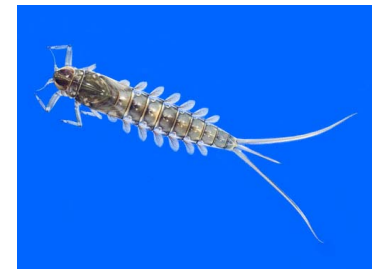
6 *Andesiops*

Ephemeroptera BAETIDAE



7 *Andesiops*

Ephemeroptera BAETIDAE



8 *Mayobaetis*

Ephemeroptera BAETIDAE



9 *Cryptonympha*

Ephemeroptera BAETIDAE



10 *Caenis*

Ephemeroptera CAENIDAE



11 *Euthyplocia*

Ephemeroptera EUTHYPLOCIIDAE



12 *Leptohyphes*

Ephemeroptera LEPTOHYPHIDAE



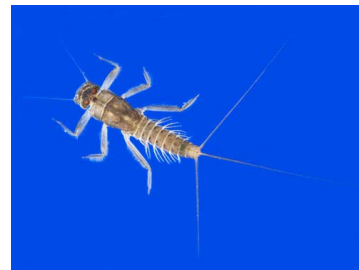
13 *Thraulodes*

Ephemeroptera LEPTOPHLEBIIDAE



14 *Thraulodes*

Ephemeroptera LEPTOPHLEBIIDAE



15 *Thraulodes*

Ephemeroptera LEPTOPHLEBIIDAE



16 *Meridialaris*

Ephemeroptera LEPTOPHLEBIIDAE



17 *Meridialaris*

Ephemeroptera LEPTOPHLEBIIDAE



18 *Meridialaris*

Ephemeroptera LEPTOPHLEBIIDAE



19 *Homooneuria*

Ephemeroptera OLIGONEURIIDAE



20 *Campsurus*

Ephemeroptera POLYMITARCYIDAE

Macroinvertebrados de ríos y quebradas a lo largo de la carretera interoceánica

¹Bern Sweeney, ¹David Funk, ²R. Wills Flowers, ³Therany Gonzales y ⁴Ana Huamantinco

¹STROUD Water Research Center, ²Florida A&M University, ³The Amazon Center for Environmental Education and Research - ACEER-Peru, ⁴Universidad Nacional Mayor de San Marcos, Perú
 Fotos: David Funk. Identificaciones: R. Wills Flowers. Producido por: ACEER en asociación con el STROUD Water Research Center.
 Gracias al Amazon Center for Environmental Education and Research - ACEER Foundation
 © David Funk [dfunk@stroudcenter.org]

[fieldguides.fieldmuseum.org] [843] versión 1 02/2017



21 *Rhionaeschna*

Odonata AESHNIDAE



22 *Rhionaeschna*

Odonata AESHNIDAE



23 *Hetaerina*

Odonata CALOPTERYGIDAE



24 *Hetaerina*

Odonata CALOPTERYGIDAE



25 *Argia*

Odonata COENAGRIONIDAE



26 *Gomphid*

Odonata GOMPHIDAE



27 *Mythyria*

Odonata LIBELLULIDAE



28 *Brechmorhoga*

Odonata LIBELLULIDAE



29 *Libellulidae*

Odonata LIBELLULIDAE



30 *Philogenia*

Odonata MEGAPODAGRIONIDAE



31 *Claudioperla*

Plecoptera GRIPOPTERYGIDAE



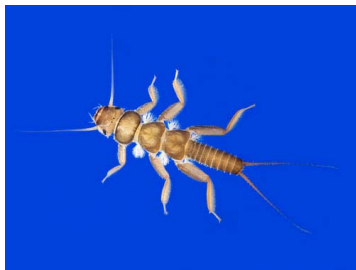
32 *Anacoreuria*

Plecoptera PERLIDAE



33 *Anacoreuria*

Plecoptera PERLIDAE



34 *Anacoreuria*

Plecoptera PERLIDAE



35 *Belostoma*-eggs

Hemiptera BELOSTOMATIDAE



36 *Belostoma*

Hemiptera BELOSTOMATIDAE



37 *Neosigara*

Hemiptera CORIXIDAE



38 *Cryphocricos*

Hemiptera NAUCORIDAE



39 *Limnocoris*

Hemiptera NAUCORIDAE



40 *Naucorid*

Hemiptera NAUCORIDAE

Macroinvertebrates of rivers and creeks along the interoceanic Highway

¹Bern Sweeney, ¹David Funk, ²R. Wills Flowers, ³Therany Gonzales y ⁴Ana Huamantinco

¹STROUD Water Research Center, ²Florida A&M University, ³The Amazon Center for Environmental Education and Research - ACEER-Peru, ⁴Universidad Nacional Mayor de San Marcos, Perú
 Photos: David Funk. Identifications: R. Wills Flowers. Produced by: ACEER in association with the STROUD Water Research Center.
 Thanks to the Amazon Center for Environmental Education and Research - ACEER Foundation
 © David Funk [dfunk@stroudcenter.org]

[fieldguides.fieldmuseum.org] [843] version 1 02/2017



41 *Rhagovelia*
Hemiptera VELIIDAE



42 *Corydalus*
Megaloptera CORYDALIDAE



43 *Paronyx*
Lepidoptera CRAMBIDAE



44 *Anomalopschidae*
Trichoptera ANOMALOPSYCHIDAE



45 *Phylloicus-pupa*
Trichoptera CALAMOCERATIDAE



46 *Phylloicus-case*
Trichoptera CALAMOCERATIDAE



47 *Banyallarga*
Trichoptera CALAMOCERATIDAE



48 *Culoptila*
Trichoptera GLOSSOSOMATIDAE



49 *Helicopsyche*
Trichoptera HELICOPSYCHIDAE



50 *Helicopsyche*
Trichoptera HELICOPSYCHIDAE



51 *Atopsyche*
Trichoptera HYDROBIOSIDAE



52 *Neatophyche*
Trichoptera HYDROBIOSIDAE



53 *Atopsyche*
Trichoptera HYDROBIOSIDAE



54 *Leptonema*
Trichoptera HYDROPSYCHIDAE



55 *Smicridea*
Trichoptera HYDROPSYCHIDAE



56 *Metrichia*
Trichoptera HYDROPTILIDAE



57 *Rhyacopsyche*
Trichoptera HYDROPTILIDAE



58 *Nectopsyche*
Trichoptera LEPTOCERIDAE



59 *Nectopsyche*
Trichoptera LEPTOCERIDAE



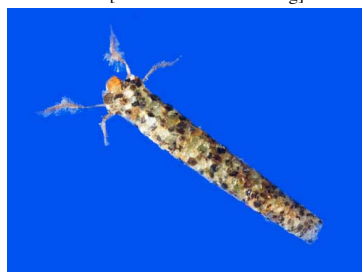
60 *Nectopsyche*
Trichoptera LEPTOCERIDAE

Macroinvertebrados de ríos y quebradas a lo largo de la carretera interoceánica

¹Bern Sweeney, ¹David Funk, ²R. Wills Flowers, ³Therany Gonzales y ⁴Ana Huamantínco

¹STROUD Water Research Center, ² Florida A&M University, ³ The Amazon Center for Environmental Education and Research - ACEER-Peru, ⁴Universidad Nacional Mayor de San Marcos, Perú
 Fotos: David Funk. Identificaciones: R. Wills Flowers. Producido por: ACEER en asociación con el STROUD Water Research Center.
 Gracias al Amazon Center for Environmental Education and Research – ACEER Foundation
 © David Funk [dfunk@stroudcenter.org]

[fieldguides.fieldmuseum.org] [843] versión 1 02/2017



61 *Nectopsyche*

Trichoptera LEPTOCERIDAE



62 *Nectopsyche*

Trichoptera LEPTOCERIDAE



63 *Anomalocosmoecus*

Trichoptera LIMNEPHILIDAE



64 *Odontocerid*

Trichoptera ODONTOCERIDAE



65 *Chimarra*

Trichoptera PHILOPOTAMIDAE



66 *Polycentropus*

Trichoptera POLYCENTROPODIDAE



67 *Dytiscid-larva*

Coleoptera DYTISCIDAE



68 *Dytiscid*

Coleoptera DYTISCIDAE



69 *Dytiscid*

Coleoptera DYTISCIDAE



70 *Pharceonus*

Coleoptera ELMIDAE



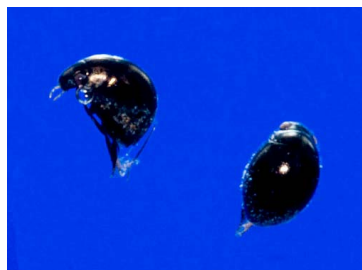
71 *Elmid*

Coleoptera ELMIDAE



72 *Tropisternus*

Coleoptera HYDROPHILIDAE



73 *Derallus*

Coleoptera HYDROPHILIDAE



74 *Hydrophilidae*

Coleoptera HYDROPHILIDAE



75 *Psephenus*

Coleoptera PSEPHENIDAE



76 *Anchytarsus*

Coleoptera PTILODACTYLIDAE



77 *Blepharocerid*

Diptera BLEPHARICERIDAE



78 *Blepharocerid*

Diptera BLEPHARICERIDAE



79 *Generic midge*

Diptera CHIRONOMIDAE



80 *Chironominae*

Diptera CHIRONOMIDAE

Macroinvertebrates of rivers and creeks along the interoceanic Highway

¹Bern Sweeney, ¹David Funk, ²R. Wills Flowers, ³Therany Gonzales y ⁴Ana Huamantínco

¹STROUD Water Research Center, ²Florida A&M University, ³The Amazon Center for Environmental Education and Research - ACEER-Peru, ⁴Universidad Nacional Mayor de San Marcos, Perú
 Photos: David Funk. Identifications: R. Wills Flowers. Produced by: ACEER in association with the STROUD Water Research Center.
 Thanks to the Amazon Center for Environmental Education and Research - ACEER Foundation
 © David Funk [dfunk@stroudcenter.org]

[fieldguides.fieldmuseum.org] [843] version 1 02/2017



81 **Clinotanypus**
Diptera CHIRONOMIDAE



82 **Dixid**
Diptera DIXIDAE



83 **Simuliid**
Diptera SIMULIIDAE



84 **Tabanid**
Diptera TABANIDAE



85 **Tipulid**
Diptera TIPULIDAE



86 **Tipulid**
Diptera TIPULIDAE



87 **Tipulid**
Diptera TIPULIDAE



88 **Mite**
No Insecta ACARI



89 **Amphipod**
No Insecta AMPHIPODA



90 **Palaeomonid**
No Insecta PALEOMONIDAE



91 **Trichodactylid**
No Insecta TRICHODACTYLIDAE



92 **Oligochaete**
No Insecta OLIGOCHAETA



93 **Oligochaete**
No Insecta OLIGOCHAETA



94 **Snail**
No Insecta GASTROPODA