

# Common FROGS of La Selva Biological Station, Costa Rica 1

Michelle E. Thompson<sup>1</sup>, Juan G. Abarca<sup>2</sup>, Enrique Salicetti Nelson<sup>3</sup>, Hansell Rodriguez Vega, Carlos de la Rosa<sup>3</sup>, Ralph Garcia Robleto, Maureen A. Donnelly<sup>1</sup>  
<sup>1</sup>Florida International University, <sup>2</sup>Universidad de Costa Rica, <sup>3</sup>Organization for Tropical Studies

Photos: Juan G. Abarca (JGA), Carlos de la Rosa (CdIR), Ralph Garcia Robleto (RGR), Hansell Rodriguez Vega (HRV), Enrique Salicetti Nelson (ESN), Michelle E. Thompson (MET)  
 Produced by: Michelle E. Thompson. Thanks to: José Iván Castillo Gomez and Selva Verde Lodge  
 © Michelle E. Thompson [michelle.elaine.thompson@gmail.com]  
 (M) Male, (Juv.) Juvenile; Snout vent lengths (Savage 2002)

[fieldguides.fieldmuseum.org] [860] version 2



1 *Incilius melanochlorus*  
 <104mm photo: ESN  
 BUFONIDAE



2 *Rhaebo haematiticus*  
 <81mm photo: CdIR  
 BUFONIDAE



3 *Rhinella marina*  
 <176mm photo: MET  
 BUFONIDAE



4 *Espadarana prosoblepon* (M)  
 <32mm photo: MET  
 CENTROLENIDAE



5 *Hyalinobatrachium fleischmanni*  
 <32mm photo: MET  
 CENTROLENIDAE



6 *Hyalinobatrachium valerioi*  
 <27mm photo: ESN  
 CENTROLENIDAE



7 *Teratohyla spinosa*  
 <24mm photo: JGA  
 CENTROLENIDAE



8 *Craugastor bransfordii*  
 <27mm photo: ESN  
 CRAUGASTORIDAE



9 *Craugastor crassidigitus*  
 <27mm photo: HRV  
 CRAUGASTORIDAE



10 *Craugastor fitzingeri*  
 <54mm photo: MET  
 CRAUGASTORIDAE



11 *Craugastor fitzingeri*  
 <54mm photo: MET  
 CRAUGASTORIDAE



12 *Craugastor megacephalus*  
 <71mm photo: MET  
 CRAUGASTORIDAE



13 *Craugastor mimus*  
 <59mm photo: JGA  
 CRAUGASTORIDAE



14 *Craugastor noblei*  
 <67mm photo: MET  
 CRAUGASTORIDAE



15 *Craugastor talamancae*  
 <51mm photo: JGA  
 CRAUGASTORIDAE



16 *Diasporus diastema*  
 <25mm photo: JGA  
 CRAUGASTORIDAE



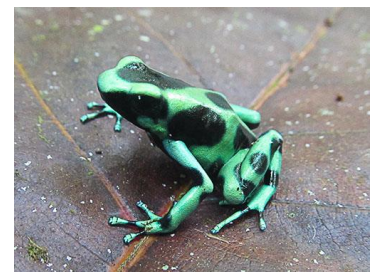
17 *Pristimantis cerasinus*  
 <36mm photo: HRV  
 CRAUGASTORIDAE



18 *Pristimantis cruentus*  
 <43mm photo: MET  
 CRAUGASTORIDAE



19 *Pristimantis ridens*  
 <26mm photo: ESN  
 CRAUGASTORIDAE



20 *Dendrobates auratus*  
 <43mm photo: MET  
 DENDROBATIDAE

# Common FROGS of La Selva Biological Station, Costa Rica 2

Michelle E. Thompson<sup>1</sup>, Juan G. Abarca<sup>2</sup>, Enrique Salicetti Nelson<sup>3</sup>, Hansell Rodriguez Vega, Carlos de la Rosa<sup>3</sup>, Ralph Garcia Robleto, Maureen A. Donnelly<sup>1</sup>  
<sup>1</sup>Florida International University, <sup>2</sup>Universidad de Costa Rica, <sup>3</sup>Organization for Tropical Studies

Photos: Juan G. Abarca (JGA), Carlos de la Rosa (CdLR), Ralph Garcia Robleto (RGR), Hansell Rodriguez Vega (HRV), Enrique Salicetti Nelson (ESN), Michelle E. Thompson (MET)  
 Produced by: Michelle E. Thompson. Thanks to: José Iván Castillo Gomez and Selva Verde Lodge  
 © Michelle E. Thompson [michelle.elaine.thompson@gmail.com]  
 (M) Male, (Juv.) Juvenile; Snout vent lengths (Savage 2002)

[fieldguides.fieldmuseum.org] [860] version 2



21 *Oophaga pumilio*  
 <25mm photo: MET  
 DENDROBATIDAE



22 *Phyllobates lugubris*  
 <25mm photo: MET  
 DENDROBATIDAE



23 *Agalychnis callidryas*  
 <78mm photo: ESN  
 HYLIDAE



24 *Agalychnis saltator*  
 <67mm photo: CdLR  
 HYLIDAE



25 *Dendropsophus ebraccata*  
 <36mm photo: MET  
 HYLIDAE



26 *Dendropsophus phlebotodes*  
 <29mm photo: MET  
 HYLIDAE



27 *Boana rufitela*  
 <56mm photo: JGA  
 HYLIDAE



28 *Boana rufitela* (juv.)  
 photo: MET  
 HYLIDAE



29 *Scinax boulengeri*  
 <54mm photo: JGA  
 HYLIDAE



30 *Scinax elaeochrous*  
 <41mm photo: JGA  
 HYLIDAE



31 *Smilisca baudinii*  
 <91mm photo: MET  
 HYLIDAE



32 *Smilisca phaeota*  
 <79mm photo: MET  
 HYLIDAE



33 *Smilisca puma*  
 <47mm photo: JGA  
 HYLIDAE



34 *Tlalocohyla loquax*  
 <48mm photo: JGA  
 HYLIDAE



35 *Leptodactylus melanonotus*  
 <56mm photo: MET  
 LEPTODACTYLIDAE



36 *Leptodactylus savegei*  
 <186mm photo: MET  
 LEPTODACTYLIDAE



37 *Hypopachus pictiventris*  
 <39mm photo: MET  
 MICROHYLIDAE



38 *Cruziohyla sylviae*  
 <88mm photo: RGR  
 PHYLLOMEDUSIDAE



39 *Lithobates vaillanti*  
 <126mm photo: HRV  
 RANIDAE



40 *Lithobates warszewitschii*  
 <64mm photo: MET  
 RANIDAE