

Generos Comunes de los ARBOLES PIONEROS

Diana Alvira, Robin Foster, y Margaret Metz

Fotos de: R. B. Foster & T. S. Wachter, R. Perez (1,2) T. Plowman (32), M. A. Guerra (9). Producido por: R. B. Foster y M. R. Metz, con el apoyo del A. Mellon Foundation © Environ. & Conservation Programs, The Field Museum, Chicago, IL 60605 USA. [www.fmnh.org/plantguides] [RRC@fmnh.org] Rapid Color Guide # 16 version 1.4



1 *Spondias mombin*  
ANACARDIACEAE



2 *Spondias mombin*  
ANACARDIACEAE



3 *Schefflera morototoni*  
ARALIACEAE



4 *Schefflera morototoni*  
ARALIACEAE



5 *Jacaranda copaia*  
BIGNONIACEAE



6 *Jacaranda copaia*  
BIGNONIACEAE



7 *Ochroma pyramidale*  
BOMBACACEAE



8 *Ochroma pyramidale*  
BOMBACACEAE



9 *Cordia alliodora*  
BORAGINACEAE



10 *Cordia alliodora*  
BORAGINACEAE



11 *Jacaratia digitata*  
CARICACEAE



12 *Cecropia gabrielis*  
CECROPIACEAE



13 *Cecropia polystachya*  
CECROPIACEAE



14 *Pourouma bicolor*  
CECROPIACEAE



15 *Pourouma minor*  
CECROPIACEAE



16 *Terminalia amazonia*  
COMBRETACEAE



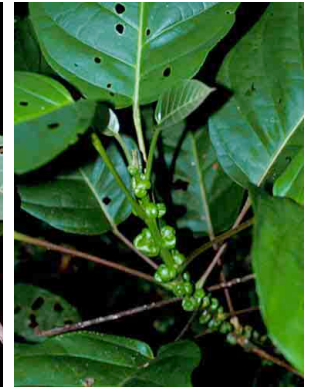
17 *Muntingia calabura*  
TILIACEAE (MUNTINGIACEAE)



18 *Aparisthium cordatum*  
EUPHORBIACEAE



19 *Croton lechleri*  
EUPHORBIACEAE



20 *Hyeronima alchorneoides*  
EUPHORBIACEAE



# Tropical America Common Genera of PIONEER TREES

Diana Alvira, Robin Foster, y Margaret Metz

Photos by: R. B. Foster & T. S. Wachter, T. Plowman (1, 32), M. A. Guerra (9). Produced by: R. B. Foster & M. R. Metz, with support from the Andrew Mellon Foundation.  
© Environ. & Conservation Programs, The Field Museum, Chicago, IL 60605 USA. [www.fmnh.org/plantguides] [RRC@fmnh.org] Rapid Color Guide # 16 version 1.4



21 *Margaritaria nobilis*  
EUPHORBIACEAE



22 *Sapium glandulosum*  
EUPHORBIACEAE



23 *Inga edulis*  
FABACEAE



24 *Inga marginata*  
FABACEAE



25 *Schizolobium parahybum*  
FABACEAE



26 *Schizolobium parahybum*  
FABACEAE



27 *Miconia elata*  
MELASTOMATACEAE



28 *Cedrela fissilis*  
MELIACEAE



29 *Ficus insipida*  
MORACEAE



30 *Triplaris poeppigiana*  
POLYGONACEAE



31 *Zanthoxylum*  
RUTACEAE



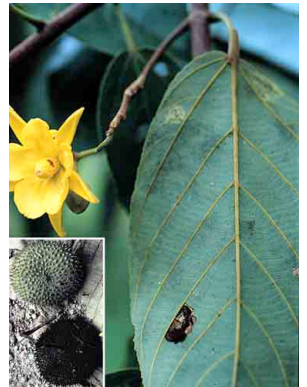
32 *Zanthoxylum*  
RUTACEAE



33 *Guazuma crinita*  
STERCULIACEAE



34 *Guazuma tomentosa*  
STERCULIACEAE



35 *Apeiba membranacea*  
TILIACEAE



36 *Apeiba tibourbou*  
TILIACEAE



37 *Heliocarpus*  
TILIACEAE



38 *Heliocarpus americanus*  
TILIACEAE



39 *Trema micrantha*  
ULMACEAE



40 *Trema micrantha*  
ULMACEAE