

Luzon Island, Philippines Frogs of Mt. Maquiling and Mt. Banahao

Arvin C. Diesmos, Wildlife Conservation Society of the Philippines

Illustrations by: A.C. Diesmos. Photos by: A.C. Diesmos, J.L. Sedlock, R.V. Redor. Produced by: R.B. Foster, A.C. Diesmos, M.R. Metz, N.R. Ingle, J.L. Sedlock with support from the Andrew Mellon Foundation, the Charles Stearns Fellowship of the California Academy of Sciences, San Francisco, and the Texas Memorial Museum, University of Texas, Austin. © A.C. Diesmos and Environmental & Conservation Programs, The Field Museum, Chicago, IL 60605, USA. [RRC@fmnh.org] Rapid Color Guide #51 version 1.1



● *Bufo marinus*



● *Hoplobatrachus rugulosus*



● *Rana cancrivora* (above)
● *Occidozyga laevis* (below)



● *Rana erythraea* (left)
● *Polypedates leucomystax* (right)



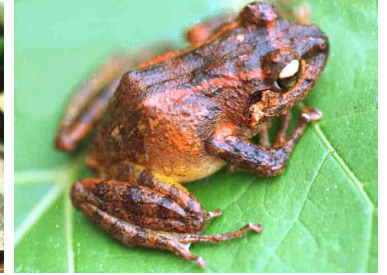
● *Limnonectes macrocephalus*



● *Platymantis corrugatus*



● *Platymantis dorsalis*



● *Platymantis luzonensis*



● *Platymantis mimulus*



● *Platymantis montanus*
Guarding its eggs.



● *Rana luzonensis*
A female.



● *Rana similis*



● *Rana vittigera*



● *Rana woodworthi*



● *Philautus surdus*



● *Rhacophorus pardalis*
Mating. The smaller green frog is the male.



● *Rhacophorus appendiculatus*



● *Kaloula conjuncta*



● *Kaloula kalingensis*



● *Kaloula picta*

This plate shows some of the representative species of frogs known from Mt. Maquiling and Mt. Banahao. Colored circles denote taxonomic families: yellow = Bufonidae, brown = Ranidae, green = Rhacophoridae, red = Microhylidae. These figures are not to scale. Body size measurements and other diagnostic characters to aid in the identification of genera and species are found on the other page. More information about these frogs can be found in the books *Philippine Amphibians, An Illustrated Field Guide* (Alcala & Brown, 1998) and *Guide to Philippine Flora and Fauna: Amphibians and Reptiles* (Alcala, 1986).

