

Minas Gerais (MG), BRAZIL
Butterflies of Atlantic Forest of South of Minas Gerais: Hesperidae
 Butterflies of the Serra de Santa Rita Mítzi Brandão Biological Reserve

Luis Fernando Alberti

Photos by: Luis Fernando Alberti. Produced by: Luis Fernando Alberti. © Luis Fernando Alberti [nuandii@hotmail.com]. Support from Identificação Morfométrica de Insetos <<https://www.facebook.com/groups/1299700260042581/>>, Artrópodos de Venezuela y demás Países Neotropicales <<https://www.facebook.com/groups/artropodosdevenezuela/P>>, <https://www.facebook.com/groups/borboletasmariposas/and> Prefeitura Municipal de Santa Rita do Sapucaí, MG, Brazil.

[fieldguides.fieldmuseum.org]

[1286] version 1 11/2020



1 *Astraptus fulgurator fulgurator*
 HESPERIIDAE - EUDAMINAE



2 *Urbanus dorantes*
 HESPERIIDAE - EUDAMINAE



3 *Urbanus proteus*
 HESPERIIDAE - EUDAMINAE



4 *Urbanus proteus*
 HESPERIIDAE - EUDAMINAE



5 *Urbanus proteus*
 HESPERIIDAE - EUDAMINAE



6 *Urbanus telex*
 HESPERIIDAE - EUDAMINAE



7 *Urbanus telex*
 HESPERIIDAE - EUDAMINAE



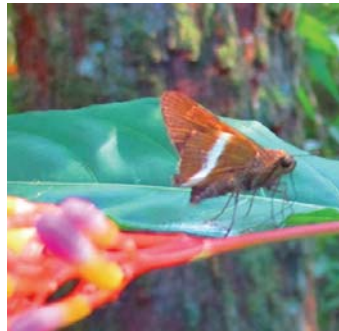
8 *Anthoptus Epictetus*
 HESPERIIDAE - HESPERIINAE



9 *Lamponia elegantula*
 HESPERIIDAE - HESPERIINAE



10 *Lerodea eufala eufala*
 HESPERIIDAE - HESPERIINAE



11 *Niconiades nikko*
 HESPERIIDAE - HESPERIINAE



12 *Eantis thraso*
 HESPERIIDAE - PYRGINAE



13 *Gorgopas petale*
 HESPERIIDAE - PYRGINAE



14 *Gorgopas petale*
 HESPERIIDAE - PYRGINAE



15 *Gorythion begga begga*
 HESPERIIDAE - PYRGINAE



16 *Gorythion begga begga*
 HESPERIIDAE - PYRGINAE

Minas Gerais (MG), BRAZIL
Butterflies of Atlantic Forest of South of Minas Gerais: Hesperidae
Butterflies of the Serra de Santa Rita Mítzi Brandão Biological Reserve

Luis Fernando Alberti

Photos by: Luis Fernando Alberti. Produced by: Luis Fernando Alberti. © Luis Fernando Alberti [nuandii@hotmail.com]. Support from Identificação Morfométrica de Insetos <<https://www.facebook.com/groups/1299700260042581/>>, Artrópodos de Venezuela y demás Países Neotropicales <<https://www.facebook.com/groups/artropodosdevenezuela/P>>, <https://www.facebook.com/groups/borboletasmariposas/and> Prefeitura Municipal de Santa Rita do Sapucaí, MG, Brazil.

[fieldguides.fieldmuseum.org]

[1286] version 1 11/2020



17 *Heliopetes omrina*
HESPERIIDAE - PYRGINAE



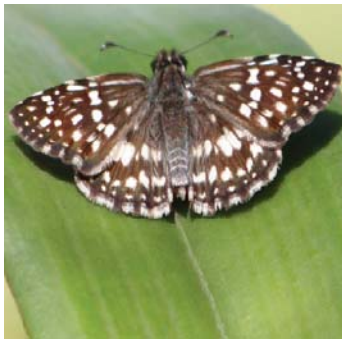
18 *Mylon maimon*
HESPERIIDAE - PYRGINAE



19 *Mylon maimon*
HESPERIIDAE - PYRGINAE



20 *Polyctor polyctor polyctor*
HESPERIIDAE - PYRGINAE



21 *Pyrgus orcus*
HESPERIIDAE - PYRGINAE



22 *Sophista plinius*
HESPERIIDAE - PYRGINAE



23 *Staphylus incisus*
HESPERIIDAE - PYRGINAE



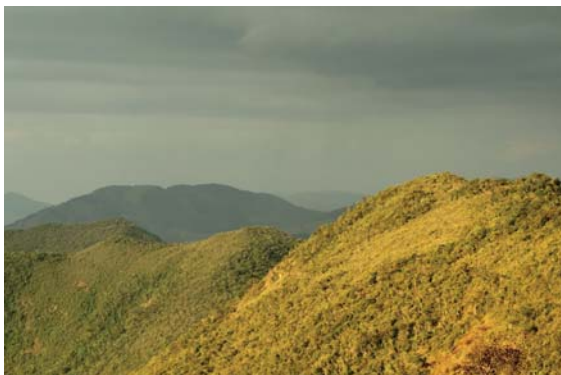
24 *Theagenes dichrous*
HESPERIIDAE - PYRGINAE



25 *Trina geometrina geometrina*
HESPERIIDAE - PYRGINAE

The Municipal Biological Reserve of Santa Rita do Sapucaí "Mítzi Brandão" is located between coordinates 22°11'44"S and 45°44'32"W in the municipality of same name. The reserve have a total area of 306.3 ha, its altitude ranges from 840 m to 1400 m a.s.l. The Mítzi Brandão Rebio's region is located upon Oxisols and Inceptisols and is covered by the Atlantic Rain Forest (Veloso et al. 1991). Detailed information about the geology, soil, maps, climate and vegetation types can be found in Fontes et al. (2013). The mean annual rainfall for the region of the Sta Rita do Sapucaí is 1,351 mm (Fontes et al. 2013). The dry season range from May to August and the rainy season from September to April, with the highest precipitation rates in December and January. Köppen-Geiger classification defined the climate of this region as Cwb, tropical of altitude with dry winter and temperate summer (Peel et al. 2007); a mesothermic climate, since it has the average air temperature in the coldest three months range between -3°C and 18°C and the average temperature of the hottest month > 10°C. The summer and winter seasons are well defined.

Sources: Fontes LEF, Simas FNB, Brandão PC, Mendonça BAF, Carli GM de, Milagres A, Senna FS, Ferreira WG, Pardini H, Ribeiro MA and Fontes JR. 2013. Plano de manejo da Reserva Biológica e do Parque Ecológico Municipal Dr. Cyro de Luna Dias, Santa Rita do Sapucaí, MG. Encarte I – Diagnóstico (in Portuguese). Programa de Apoio à Competitividade dos Arranjos Produtivos Locais de Minas Gerais. SINDVEL, BID, SEBRAE MG, IEL FEMIG, Governo de Minas. 221p.; Veloso HP, Rangel-Filho ALR and JCA Lima. 1991. Classificação da vegetação brasileira, adaptada a um sistema universal. Rio de Janeiro: IBGE/Projeto RadamBrasil.



Aspect of the Reserva Mítzi Brandão in
Santa Rita do Sapucaí, MG, Brazil.



Aspect of the interior of the Atlantic Rain Forest in
Santa Rita do Sapucaí.