

Bogotá D.C, COLOMBIA

Phytophagous, predators and parasitoids collected from *Lafoensia acuminata* and *Liquidambar styraciflua* in Bogotá city parks

Esteban Tulande-M¹, Sergio Andrés Vargas¹, Juliana Duran Prieto¹ Valentina Ocampo² & Luis Gabriel Perez¹
¹Jardín Botánico de Bogotá José Celestino Mutis & ²Pontificia Universidad Javeriana

Photos: Esteban Tulande-M (ET-M) - Sergio Vargas (SAV) – Juliana Duran-Prieto (JDP) Produced by Esteban Tulande-M, Sergio Andres Vargas, Juliana Duran Prieto, Valentina Ocampo and Alicia Diaz, Field Museum. (M) Male, (F) Female; Associated Tree: *Lafoensia acuminata* (G), *Liquidambar styraciflua* (L), Both (B)



© Field Museum (2020) CC BY-NC 4.0. Licensed works are free to use/share/remix with attribution, but does not permit commercial use of the original work.

[fieldguides.fieldmuseum.org]

[1289] version 1 1/2021



1 *Lafoensia acuminata*
"Guayacan" (G)
LYTHRACEAE

photo SAV

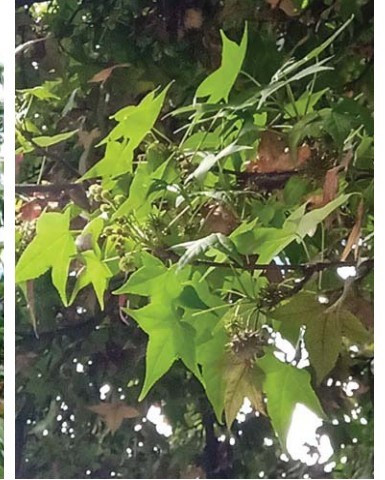


2 *Lafoensia acuminata*
"Guayacan"(G)
LYTHRACEAE



3 *Liquidambar styraciflua*
"Liquidambar" (L)
ALTINGIACEAE

photo ET-M



4 *Liquidambar styraciflua*
"Liquidambar" (L)
ALTINGIACEAE



5 Idiocerinae
CICADELLIDAE (B)

photo SAV



6 *Empoasca* sp.
CICADELLIDAE (B)

photo SAV



7 *Gypona* sp.
CICADELLIDAE (G)

photo SAV



8 *Phytocoris* sp.
MIRIDAE (G)

photo SAV



9 *Phytocoris* sp.
MIRIDAE (G)

photo SAV



10 *Rhinacloa* sp.
MIRIDAE (G)

photo SAV



11 *Tropidostepes chapingoensis*
MIRIDAE (G)

photo SAV



12 *Monalonion vlezangeli*
MIRIDAE (G)

photo SAV



13 *Hyaliodocoris* sp.
MIRIDAE (G)

photo SAV



14 *Froeschnerisca* sp.
MIRIDAE (G)

photo SAV



15 *Harmonia axyridis*
COCCINELIDAE (G)

photo ET-M



16 *Mulsantina mexicana*
COCCINELIDAE (B)

photo ET-M

Bogotá D.C, COLOMBIA

Phytophagous, predators and parasitoids collected from
Lafoensia acuminata and *Liquidambar styraciflua* in Bogotá city parks

Esteban Tulande-M¹, Sergio Andrés Vargas¹, Juliana Duran Prieto¹ Valentina Ocampo² & Luis Gabriel Perez
¹Jardín Botánico de Bogotá José Celestino Mutis & ²Pontificia Universidad Javeriana

Photos: Esteban Tulande-M (ET-M) - Sergio Vargas (SAV) – Juliana Duran-Prieto (JDP) Produced by Esteban Tulande-M, Sergio Andres Vargas, Juliana Duran Prieto, Valentina Ocampo and Alicia Diaz, Field Museum. (M) Male, (F) Female; Associated Tree: *Lafoensia acuminata* (G), *Liquidambar styraciflua* (L), Both (B)



© Field Museum (2020) CC BY-NC 4.0. Licensed works are free to use/share/remix with attribution, but does not permit commercial use of the original work.

[fieldguides.fieldmuseum.org]

[1289] version 1 1/2021



17 *Zagloba beaumonti*
COCCINELIDAE (G)

photo ET-M



18 Aleocharinae
STAPHYLINIDAE (L)

photo ET-M



19 *Ceraeochrysa* sp.
CHRYSOPIDAE (B)

photo ET-M



20 Chrysopidae larva.
CHRYSOPIDAE (B)

photo ET-M



21 *Hemerobius* sp.
HEMEROBIDAE (G)

photo ET-M



22 Hemerobidae larva.
HEMEROBIDAE (G)

photo ET-M



23 *Empicoris* sp.
REDUVIIDAE (B)

photo ET-M



24 *Chrysocharis* sp.
EULOPHIDAE (G)

photo ET-M



25 *Chrysocharis* sp.
EULOPHIDAE (L)

photo ET-M



26 *Pediobius* sp.
EULOPHIDAE (G)

photo ET-M



27 *Horismenus* sp.
EULOPHIDAE (G)

photo ET-M



28 *Horismenus* sp.
EULOPHIDAE (G)

photo ET-M



29 *Horismenus* sp.
EULOPHIDAE (L)



30 *Horismenus* sp.
EULOPHIDAE (B)

photo ET-M



31 Tetrastichinae
EULOPHIDAE (G)

photo ET-M



32 *Aprostocetus* sp.
EULOPHIDAE (B)

photo ET-M

Bogotá D.C, COLOMBIA
Phytophagous, predators and parasitoids collected from
***Lafoensia acuminata* and *Liquidambar styraciflua* in Bogotá city parks**

Esteban Tulande-M¹ · Sergio Andrés Vargas¹, Juliana Duran Prieto¹ Valentina Ocampo² & Luis Gabriel Perez

¹Jardín Botánico de Bogotá José Celestino Mutis & ²Pontificia Universidad Javeriana

Photos: Esteban Tulande-M (ET-M) - Sergio Vargas (SAV) – Juliana Duran-Prieto (JDP) Produced by Esteban Tulande-M, Sergio Andres Vargas, Juliana Duran Prieto, Valentina Ocampo and Alicia Diaz, Field Museum. (M) Male, (F) Female; Associated Tree: *Lafoensia acuminata* (G), *Liquidambar styraciflua* (L), Both (B)



© Field Museum (2020) CC BY-NC 4.0. Licensed works are free to use/share/remix with attribution, but does not permit commercial use of the original work.

[fieldguides.fieldmuseum.org]

[1289] version 1 1/2021



33 *Colpoclypeus* sp
EULOPHIDAE (G)

photo ET-M



34 *Metaphycus* sp.
ENCIRTIDAE (B)

photo ET-M



35 *Metaphycus* sp.
ENCIRTIDAE (G)

photo ET-M



36 *Tetracnemoidea* sp.
ENCIRTIDAE (L)

photo ET-M



37 Encyrtidae
ENCIRTIDAE (G)

photo ET-M



38 Encyrtidae
ENCIRTIDAE (G)

photo ET-M



39 *Copidosoma* sp
ENCIRTIDAE (L)

photo ET-M



40 Encyrtidae
ENCIRTIDAE (L)

photo ET-M



41 Encyrtidae
ENCIRTIDAE (B)

photo ET-M



42 Encyrtidae
ENCIRTIDAE (G)

photo ET-M



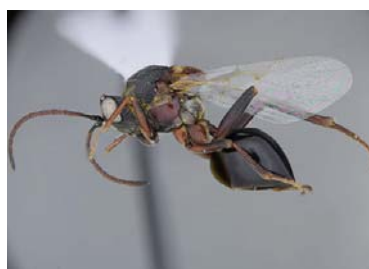
43 *Encarsia* sp.
APHELINIDAE (L)

photo ET-M



44 Aphelinidae
APHELINIDAE (B)

photo ET-M



45 *Callaspidia defonscolombei*
FIGITIDAE (G)

photo ET-M



46 Eucoilinae
FIGITIDAE (B)

photo ET-M



47 Scelionidae
SCELIONIDAE (B)

photo ET-M



48 Scelionidae
SCELIONIDAE (B)

photo ET-M

Bogotá D.C, COLOMBIA

Phytophagous, predators and parasitoids collected from *Lafoensia acuminata* and *Liquidambar styraciflua* in Bogotá city parks

Esteban Tulande-M¹, Sergio Andrés Vargas¹, Juliana Duran Prieto¹, Valentina Ocampo² & Luis Gabriel Perez

¹Jardín Botánico de Bogotá José Celestino Mutis & ²Pontificia Universidad Javeriana

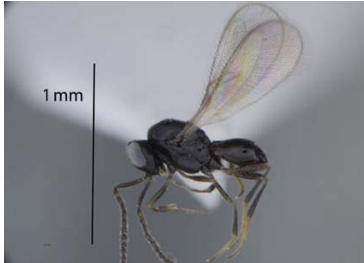
Photos: Esteban Tulande-M (ET-M) - Sergio Vargas (SAV) - Juliana Duran-Prieto (JDP) Produced by Esteban Tulande-M, Sergio Andres Vargas, Juliana Duran Prieto, Valentina Ocampo and Alicia Diaz, Field Museum. (M) Male, (F) Female; Associated Tree: *Lafoensia acuminata* (G), *Liquidambar styraciflua* (L), Both (B)



© Field Museum (2020) CC BY-NC 4.0. Licensed works are free to use/share/remix with attribution, but does not permit commercial use of the original work.

[fieldguides.fieldmuseum.org]

[1289] version 1 1/2021



49 Scelionidae
SCELIONIDAE (B)

photo ET-M



50 Scelionidae
SCELIONIDAE (L)

photo ET-M



51 *Exallonyx* sp.
PROCTOTRUPIDAE (B)

photo ET-M



52 *Dendrocerus carpenteri* (M)
MEGASPILIDAE (L)

photo ET-M



53 *Dendrocerus carpenteri* (F)
MEGASPILIDAE (L)

photo ET-M



54 *Apis mellifera*
APIDAE (G)

photo ET-M



55 Braconidae
BRACONIDAE (L)

photo ET-M



56 Braconidae
BRACONIDAE (L)

photo ET-M



57 Braconidae
BRACONIDAE (l)

photo ET-M



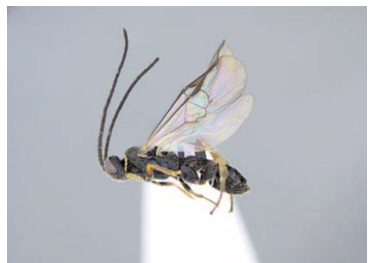
58 Braconidae
BRACONIDAE

photo ET-M



59 Braconidae
BRACONIDAE (L)

photo ET-M



60 Braconidae
BRACONIDAE (G)

photo ET-M



61 *Chelonus* sp.
BRACONIDAE (G)

photo ET-M



62 Braconidae
BRACONIDAE (L)

photo ET-M



63 *Aphidius* sp.
BRACONIDAE (G)

photo ET-M



64 Ichneumonidae
ICHNEUMONIDAE (B)


photo ET-M

Bogotá D.C, COLOMBIA
Phytophagous, predators and parasitoids collected from
***Lafoensia acuminata* and *Liquidambar styraciflua* in Bogotá city parks**

Esteban Tulande-M¹ · Sergio Andrés Vargas¹, Juliana Duran Prieto¹ Valentina Ocampo² & Luis Gabriel Perez

¹Jardín Botánico de Bogotá José Celestino Mutis & ²Pontificia Universidad Javeriana

Photos: Esteban Tulande-M (ET-M) - Sergio Vargas (SAV) – Juliana Duran-Prieto (JDP) Produced by Esteban Tulande-M, Sergio Andres Vargas, Juliana Duran Prieto, Valentina Ocampo and Alicia Diaz, Field Museum. (M) Male, (F) Female; Associated Tree: *Lafoensia acuminata* (G), *Liquidambar styraciflua* (L), Both (B)

 © Field Museum (2020) CC BY-NC 4.0. Licensed works are free to use/share/remix with attribution, but does not permit commercial use of the original work.

[fieldguides.fieldmuseum.org]

[1289] version 1 1/2021



65 Ichneumonidae
ICHNEUMONIDAE (B)
photo ET-M



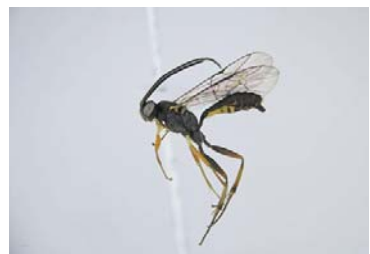
66 Ichneumonidae
ICHNEUMONIDAE (G)
photo ET-M



67 Ichneumonidae
ICHNEUMONIDAE (G)
photo ET-M



68 Eucerotinae
ICHNEUMONIDAE (L)
photo ET-M



69 Tatogastrinae
ICHNEUMONIDAE (L)
photo ET-M



70 Ichneumonidae
ICHNEUMONIDAE (L)
photo ET-M



71 *Mymar* sp.
MYMARIDAE (L)
photo ET-M



72 *Anagrus* sp.
MYMARIDAE (B)
photo ET-M



73 *Polynema* sp.
MYMARIDAE (L)
photo ET-M



74 Mymaridae
MYMARIDAE (B)
photo ET-M



75 *Lambdoregma* sp.
EUPELMIDAE (L)
photo ET-M



76 *Pegoscapus bacataensis*
AGAONIDAE (B)
photo ET-M



77 Pteromalidae
PTEROMALIDAE (L)
photo ET-M



78 Pteromalidae
PTEROMALIDAE (L)
photo ET-M



79 Pteromalidae
PTEROMALIDAE (L)
photo ET-M



80 Pteromalidae
PTEROMALIDAE (L)
photo ET-M



81 Pteromalidae
PTEROMALIDAE (L)
photo ET-M



82 Pteromalidae
PTEROMALIDAE (G)
photo ET-M