


Introduced Freshwater Snails in Hawai'i:


Taylor M.B. Maruno, Bishop Museum, Honolulu. Illustrations by Lily Evans (Shell Shapes) and Andy J. Huang (Shell Terminology & Handedness)

Shell Shapes


Conical



Beehive
Resembles a traditional beehive




Bulimoid
Shell height is greater than shell width, shell width increasing regularly




Subcylindrical
Shell width increases regularly in early whorls, and slows in later whorls


Heliciform




Globose
Similar to heliciform, higher spire and more rounded shape overall



Depressed Heliciform
Shell width is greater than shell height

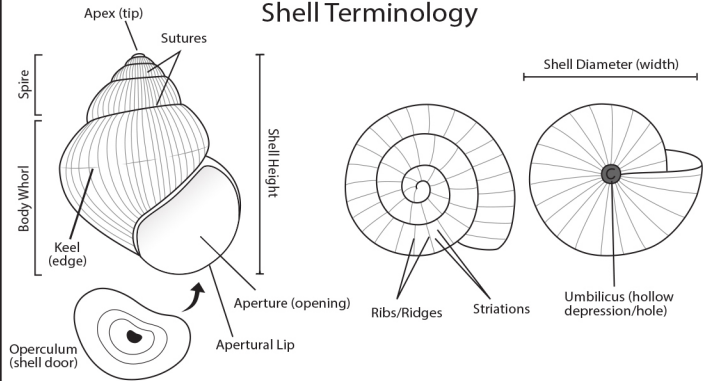


Discoidal
Shell width is greater than shell height, top and bottom of shell flattened with little to no spire elevation




Succiniform
The shell shape of the Succineidae, which has a large aperture and a larger shell height than shell width. The spire is relatively much shorter and smaller than the body whorl.


Shell Terminology



Handedness



Sinistral
"Left-handed"



Dextral
"Right-handed"

Planorbidae

Planorbella duryi/trivolvis
Ramshorn snails



Shell light to dark brown, relatively thin and somewhat translucent; body is brown, may see some patterning through shell

Shell is spiraled like a "rams-horn" in a flat coil shape; common snail in the aquarium trade



Shell diameter: 1-2 cm
Shell shape: heliciform (discoidal)

Ampullariidae

Pomacea canaliculata
Apple snail



Shell usually tannish brown/yellow to dark brown; shell rounded with deeply impressed sutures

Lays bright pink eggs in clusters/masses; the largest freshwater snail in Hawai'i (one of the world's worst invasive species); common pest in lo'i



Shell height: 6-9 cm
Shell shape: globose
Operculum present



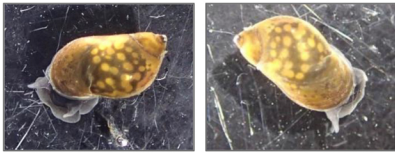
Lymnaeidae

Pseudosuccinea columella American ribbed fluke snail



Shell tan/light brown, relatively thin and translucent with fine ribbing

Aperture has no operculum; body whorl is very large compared to spire



Hawai'i also has various native species of Lymnaeidae that inhabit waterfalls and seeps

Shell height: 1 cm
Shell shape: succiniform/conical (bulimoid)
Dextral (right-handed)

Physidae

Physella acuta Acute bladder snail



Shell yellowish tan, transparent and glossy; body has black/white spotted pattern usually visible through shell

Aperture ear-shaped, has no operculum; body whorl is very large compared to spire



Shell height: 1-1.5 cm
Shell shape: succiniform/conical (bulimoid)
Sinistral (left-handed)

Thiaridae

Melanooides tuberculata Red-rim melania



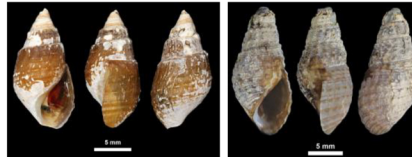
Shell light brown with reddish (chestnut) spiral bands/flames made from spots; shell moderately thick, has ribs/ridges

Strongly pointed spire, though tip (apex) of shell usually eroded/broken; operculum present



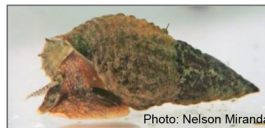
Shell height: 2-4 cm
Shell shape: conical (subcylindrical)
Dextral (right-handed)

Tarebia granifera Quilted melania



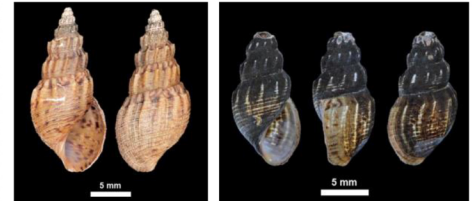
Shell brown to yellow-tan, color can be variable; shell moderately thick, ribs and striations make the shell look bumpy

Strongly pointed spire, though apex (tip) of shell usually eroded/broken; operculum present



Shell height: 2-4 cm
Shell shape: conical (subcylindrical/bulimoid)
Dextral (right-handed)

Mieniplotia scabra



Shell brownish, sometimes with rust-colored flames/spots

Spiral ridges/ribs form spikes or spike-like nodules that protrude upwards on shell; whorls distinctly sutured

Spire not as elongated as *M. tuberculata*; operculum present

Shell height: 1-3 cm
Shell shape: conical (bulimoid)
Dextral (right-handed)