

MARIPOSAS del Bajo Río Caquetá y Apaporis (Amazonia Colombiana)

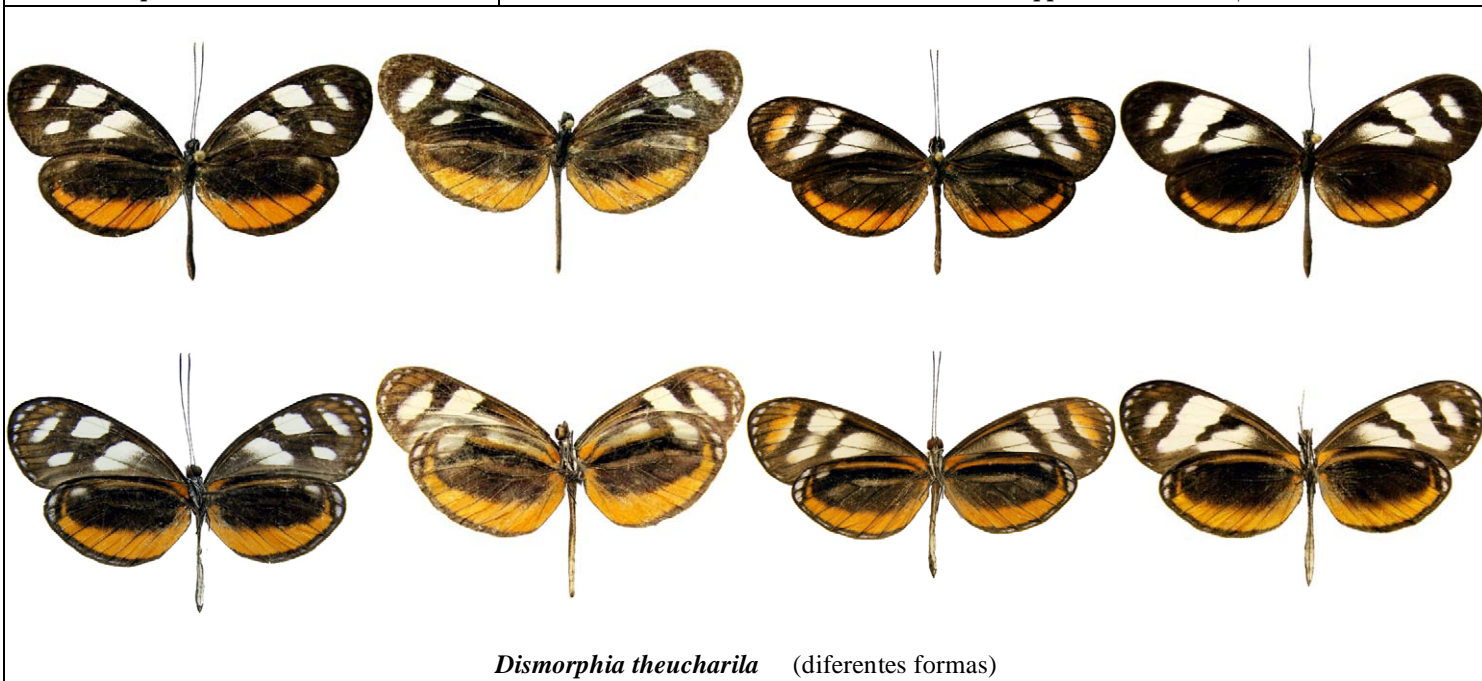
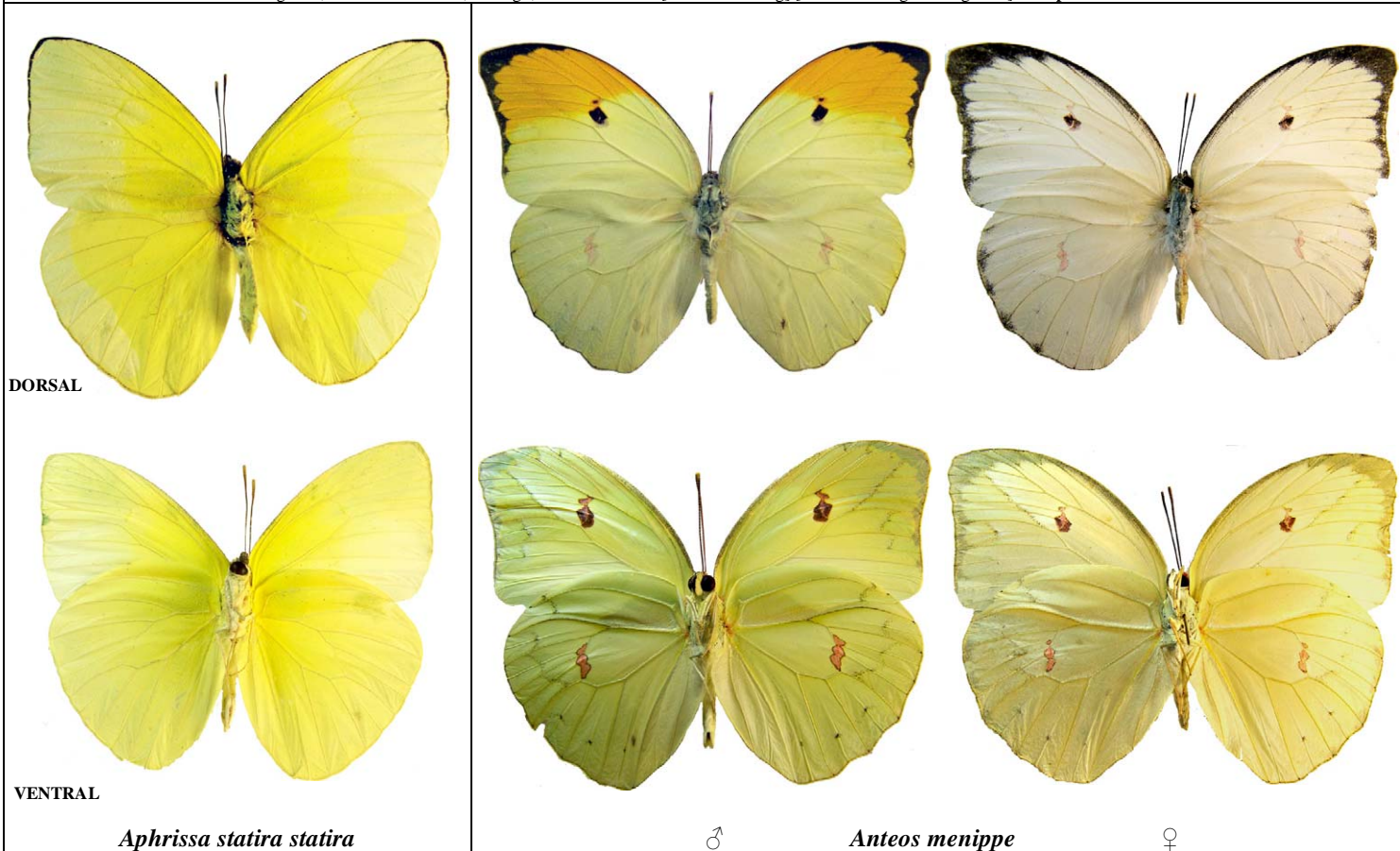
PIERIDAE

Jaime Pinzón-C. - - Conservación Internacional Colombia

Fotos de J. Pinzón-C. Producido por: T. Wachter, R. B. Foster, & S. Kaplan, con el apoyo de Gordon & Betty Moore Foundation.

© Jaime Pinzón-C. [jpc_550@hotmail.com] Conservation International - Colombia, Cra 13 # 71-41 Bogotá, Colombia: [http://www.conservation.org.co]

© Environmental & Conservation Programs, The Field Museum, Chicago, IL 60605 USA. [RRC@fmnh.org] [www.fmnh.org/animalguides] **Rapid Color Guide # 202** versión 2 02/2009



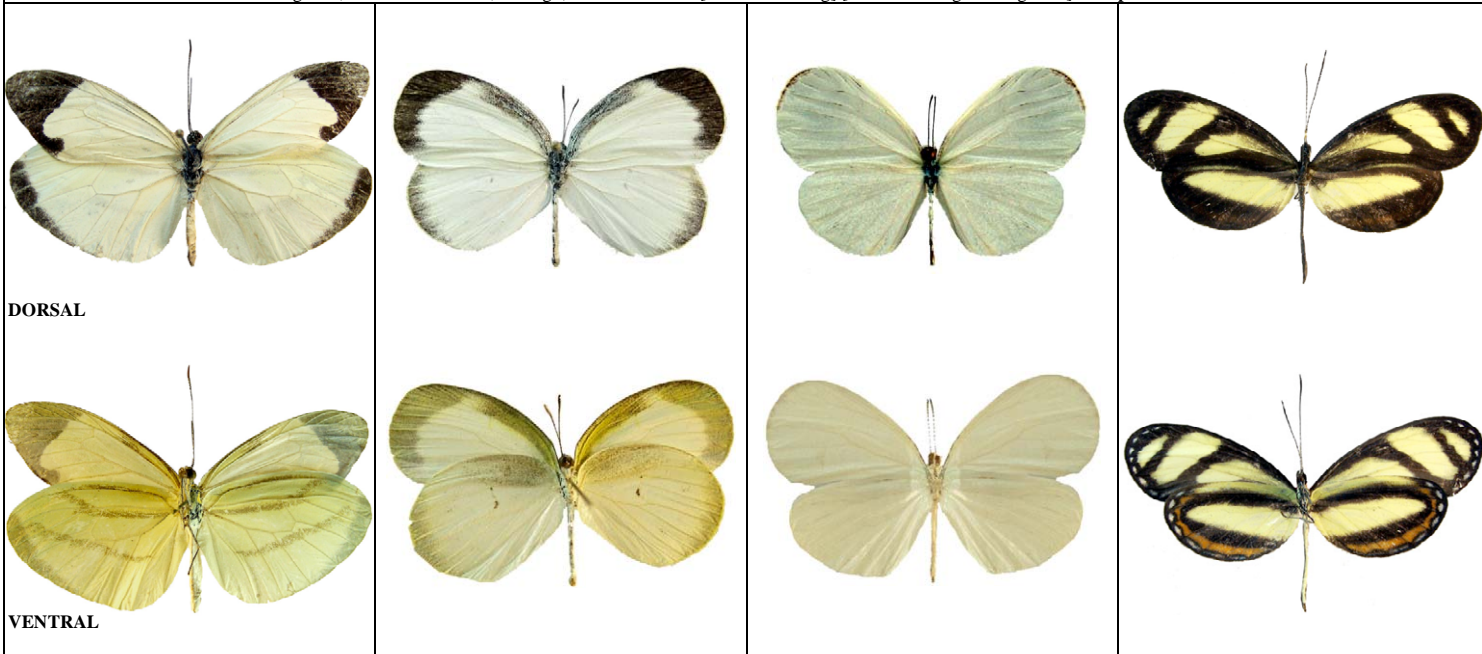
PIERIDAE

Jaime Pinzón-C. - - Conservación Internacional Colombia

Fotos de J. Pinzón-C. Producido por: T. Wachter, R. B. Foster, & S. Kaplan, con el apoyo de Gordon & Betty Moore Foundation.

© Jaime Pinzón-C. [jpc_550@hotmail.com] Conservation International – Colombia, Cra 13 # 71-41 Bogotá, Colombia: [http://www.conservation.org.co]

© Environmental & Conservation Programs, The Field Museum, Chicago, IL 60605 USA. [RRC@fmnh.org] [www.fmnh.org/animalguides] **Rapid Color Guide # 202** versión 2 02/2009

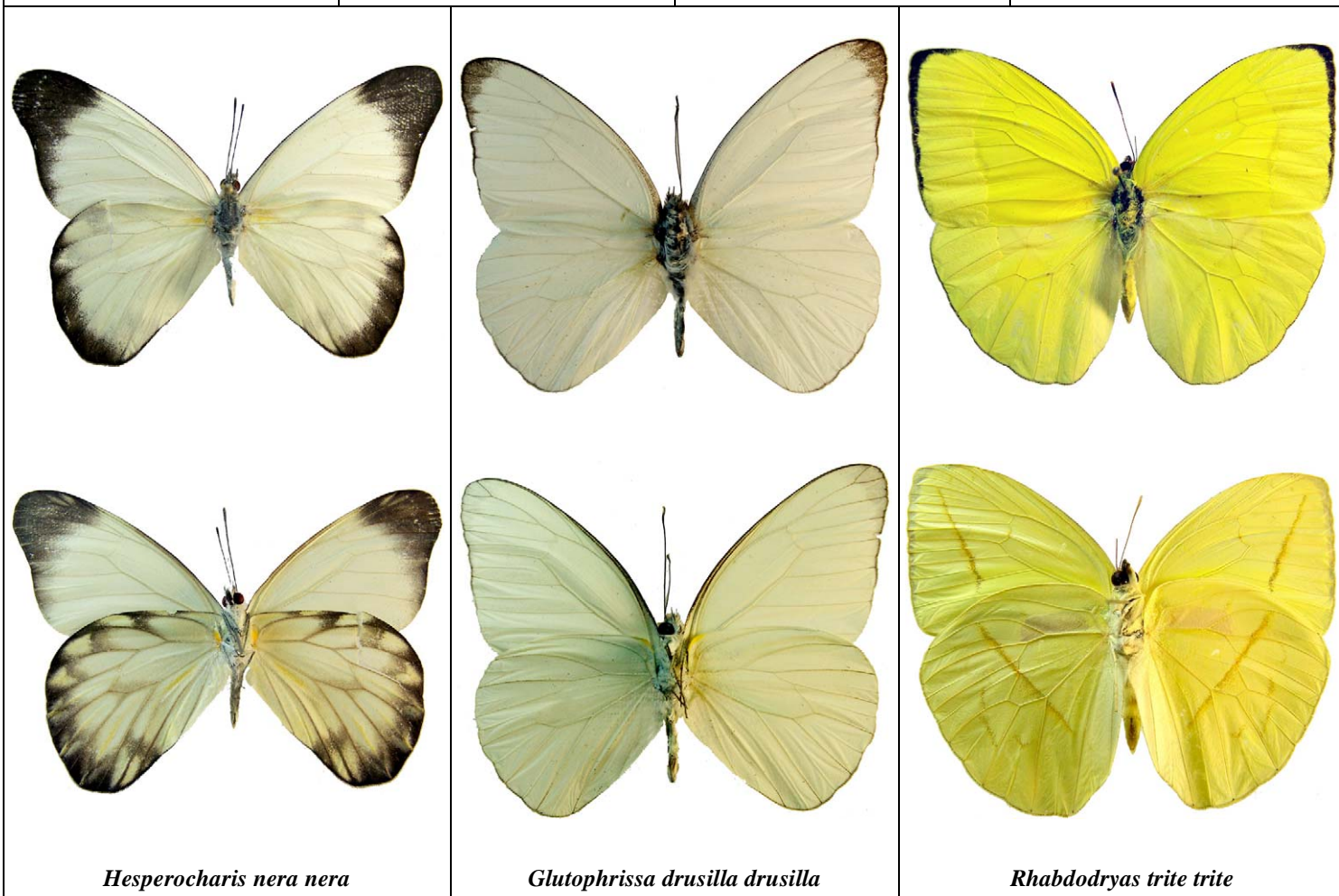


Enantia lina mercenaria

Eurema agave agave

Leucidia brephos

Moschoneura pinthous monica



Hesperocharis nera nera

Glutophrissa drusilla drusilla

Rhabdodryas trite trite

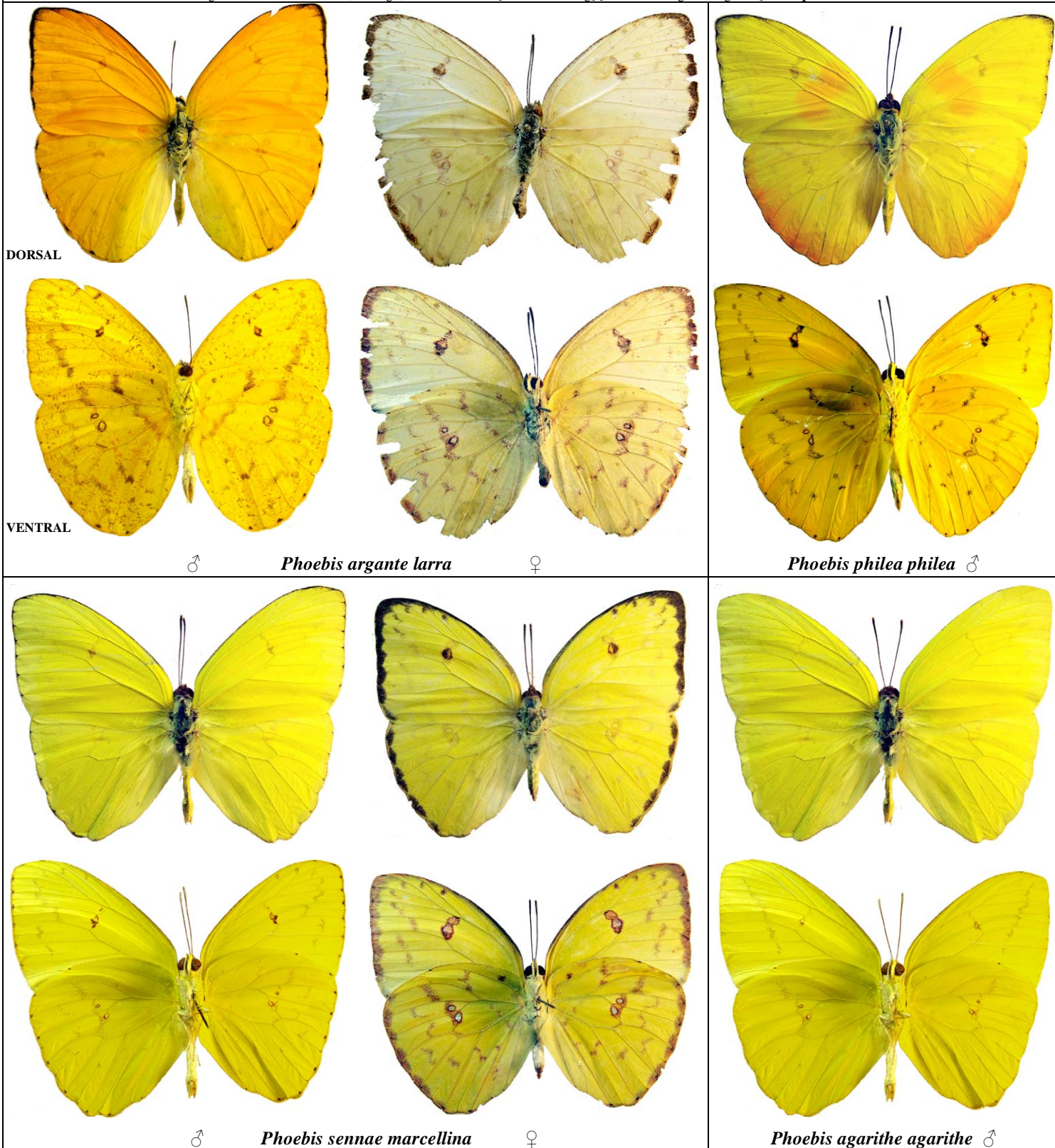
PIERIDAE

Jaime Pinzón-C. - - Conservación Internacional Colombia

Fotos de J. Pinzón-C. Producido por: T. Wachter, R. B. Foster, & S. Kaplan, con el apoyo de Gordon & Betty Moore Foundation.

© Jaime Pinzón-C. [jpc_550@hotmail.com] Conservation International – Colombia, Cra 13 # 71-41 Bogotá, Colombia: [http://www.conservation.org.co]

© Environmental & Conservation Programs, The Field Museum, Chicago, IL 60605 USA. [RRC@fmnh.org] [www.fmnh.org/animalguides] **Rapid Color Guide # 202** versión 2 02/2009



PIERIDAE

Jaime Pinzón-C. - - Conservación Internacional Colombia

Fotos de J. Pinzón-C.. Producido por: T. Wachter, R. B. Foster, & S. Kaplan, con el apoyo de Gordon & Betty Moore Foundation.

© Jaime Pinzón-C. [jpc_550@hotmail.com] Conservation International - Colombia, Cra 13 # 71-41 Bogotá, Colombia: [http://www.conservation.org.co]

© Environmental & Conservation Programs, The Field Museum, Chicago, IL 60605 USA. [RRC@fmnh.org] [www.fmnh.org/animalguides] **Rapid Color Guide # 202** versión 2 02/2009



DORSAL



Pyrisitia leuce athalia



♂

Pyrisitia limbia



♀



VENTRAL

Pyrisitia dina gabriela



PIERIDAE

Anteos menippe (Hübner, [1818])

Aphrissa statira statira (Cramer, 1777)

Dismorphia theucharila (Doubleday, 1848)

Enantia lina mercenaria (Herbst, 1792)

Eurema agave agave (Cramer, 1775)

Glutophrissa drusilla drusilla (Cramer, 1777)

Hesperocharis nera nera (Hewitson, 1852)

Leucidia brephos (Hübner, [1809])

Moschoneura pinthous monica (Lamas, 2004)

Phoebis agarithe agarithe (Bosidival, 1816)

Phoebis argante larra (Fabricius, 1775)

Phoebis philea philea (Linnaeus, 1763)

Phoebis sennae marcellina (Cramer, 1777)

Pyrisitia dina gabriela (Le Crom y Llorente, 2004)

Pyrisitia leuce athalia (C. Felder y R. Felder, 1865)

Pyrisitia limbia (C. Felder y R. Felder, 1861)

Rhabdodryas trite trite (Linnaeus, 1758)

