

Lycophytes & Ferns from Gunma Park: an urban fragment in the Amazon

Ana Carla Feio dos Santos & Sebastião Maciel -- Museu Paraense Emílio Goeldi (MPEG) – Coordenação de Botânica

Photos by the authors. Produced by: Juliana Philipp, M. von Konrat, R. Foster, T. Wachter. Support from Connie Keller, E. Hyndman Fund and A. Mellon Foundation. Thanks to Francine Costa. © Carla Feio [carlinhafeio@gmail.com]. Thanks to Dr. Márcio Roberto Pietrobon, Conselho Nacional de Desenvolvimento Científico e Tecnológico (CNPq) and Museu Paraense Emílio Goeldi. © ECCo, The Field Museum, Chicago, IL 60605 USA. [http://fieldmuseum.org/IDtools] [rrc@fieldmuseum.org] **Rapid Color Guide # 340** version 1 06/2012



1 *Adiantum glaucescens*



2 *Adiantum paraense*



3 *Adiantum tomentosum*



4 *Adiantum tomentosum*



5 *Anetium citrifolium*



6 *Asplenium juglandifolium*



7 *Asplenium juglandifolium*



8 *Asplenium serratum*



9 *Blechnum serrulatum*



10 *Campyloneurum phyllitidis*



11 *Cochlidium serrulatum*



12 *Cyathea microdonta*



13 *Cyathea microdonta*



14 *Cyathea microdonta*



15 *Cyathea surinamensis*



16 *Cyclodium meniscioides*



17 *Cyclodium meniscioides*



18 *Danaea simplicifolia*



19 *Didymoglossum punctatum*



20 *Elaphoglossum discolor*

Lycophytes & Ferns from Gunma Park: an urban fragment in the Amazon

Ana Carla Feio dos Santos & Sebastião Maciel -- Museu Paraense Emílio Goeldi (MPEG) – Coordenação de Botânica

Photos by the authors. Produced by: Juliana Philipp, M. von Konrat, R. Foster, T. Wachter. Support from Connie Keller, E.Hyndman Fund and A. Mellon Foundation. Thanks to Francine Costa. © Carla Feio [carlinhafeio@gmail.com]. Thanks to Dr. Márcio Roberto Pietrobom, Conselho Nacional de Desenvolvimento Científico e Tecnológico (CNPq) and Museu Paraense Emílio Goeldi. © ECCo, The Field Museum, Chicago, IL 60605 USA. [http://fieldmuseum.org/IDtools] [rrc@fieldmuseum.org]

Rapid Color Guide # 340 version 1 06/2012



21 *Elaphoglossum discolor*



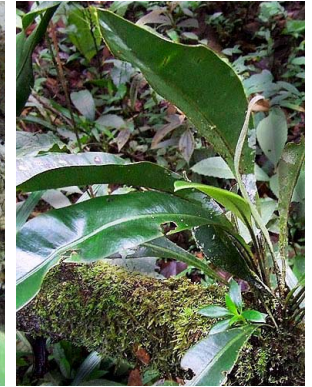
22 *Elaphoglossum flaccidum*



23 *Elaphoglossum laminarioides*



24 *Elaphoglossum laminarioides*



25 *Elaphoglossum luridum*



26 *Elaphoglossum obovatum*



27 *Elaphoglossum styriacum*



28 *Hecistopteris pumila*



29 *Hymenophyllum hirsutum*



30 *Hymenophyllum polyanthos*

Photo: Marcio Pietrobom



31 *Lellingeria suspensa*



32 *Lindsaea lancea*



33 *Lindsaea lancea*



34 *Metaxya rostrata*



35 *Metaxya rostrata*



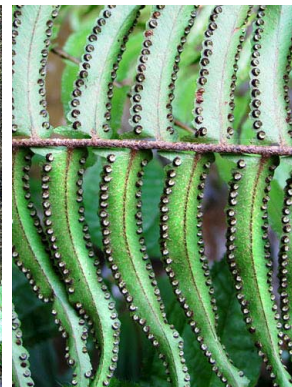
36 *Microgramma reptans*



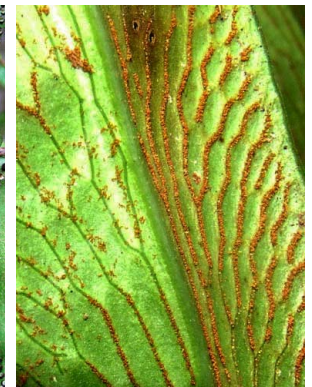
37 *Microgramma thurnii*



38 *Nephrolepis brownii*



39 *Nephrolepis brownii*



40 *Polytaenium guayanense*

Photo: MarcioPietrobom

Lycophytes & Ferns from Gunma Park: an urban fragment in the Amazon

Ana Carla Feio dos Santos & Sebastião Maciel -- Museu Paraense Emílio Goeldi (MPEG) – Coordenação de Botânica

Photos by the authors. Produced by: Juliana Philipp, M. von Konrat, R. Foster, T. Wachter. Support from Connie Keller, E. Hyndman Fund and A. Mellon Foundation. Thanks to Francine Costa. © Carla Feio [carlinhafeio@gmail.com]. Thanks to Dr. Márcio Roberto Pietrobon, Conselho Nacional de Desenvolvimento Científico e Tecnológico (CNPq) and Museu Paraense Emílio Goeldi. © ECCo, The Field Museum, Chicago, IL 60605 USA. [http://fieldmuseum.org/IDtools] [rrc@fieldmuseum.org] **Rapid Color Guide # 340** version 1 06/2012



41 *Selaginella conduplicata*



42 *Selaginella producta*



43 *Selaginella producta*



44 *Serpocaulon triseriale*



45 *Trichomanes arbuscula*

Photo: Jefferson Costa



46 *Trichomanes pedicellatum*



47 *Trichomanes pinnatum*



48 *Trichomanes pinnatum*



49 *Triplophyllum angustifolium*



50 *Triplophyllum dicksonioides*

Photo: Sebastião Maciel



Park entrance



Secondary trail - terra firme

Photo: MarcioPietrobon