

Epiphytic ferns and allies of Podocarpus Biosphere Reserve

Southeastern Ecuador, from moist forest at 2000-2500 m elevation

Florian A. Werner & Glenda Mendieta-Leiva

Functional Ecology, University of Oldenburg, Germany

Thanks to Alan R. Smith and Robbin C. Moran for identifications

Photos, production & copyright: G. Mendieta-Leiva [glendamendieta@gmail.com] & F. A. Werner [florianwerner@yahoo.com]

v.1.0
07/2011



Huperzia ericifolia
LYCOPODIACEAE



Huperzia ericifolia
LYCOPODIACEAE



Huperzia curvifolia
LYCOPODIACEAE



Huperzia sarmentosa
LYCOPODIACEAE



Huperzia sarmentosa
LYCOPODIACEAE



Huperzia callitrichifolia
LYCOPODIACEAE



Huperzia callitrichifolia
LYCOPODIACEAE



Asplenium cristatum
ASPLENIACEAE



Asplenium cristatum
ASPLENIACEAE



Asplenium cuspidatum
ASPLENIACEAE



Asplenium cuspidatum
ASPLENIACEAE



Asplenium fragrans
ASPLENIACEAE



Asplenium fragrans
ASPLENIACEAE



Asplenium harpeodes
ASPLENIACEAE



Asplenium harpeodes
ASPLENIACEAE



Asplenium hastatum
ASPLENIACEAE



Asplenium hastatum
ASPLENIACEAE



Asplenium incurvatum
ASPLENIACEAE



Asplenium cf. praemorsum
ASPLENIACEAE



Asplenium cf. praemorsum
ASPLENIACEAE

Epiphytic ferns and allies of Podocarpus Biosphere Reserve

Southeastern Ecuador, from moist forest at 2000-2500 m elevation

Florian A. Werner & Glenda Mendieta-Leiva

Functional Ecology, University of Oldenburg, Germany

Thanks to Alan R. Smith and Robbin C. Moran for identifications

Photos, production & copyright: G. Mendieta-Leiva [glendamendieta@gmail.com] & F. A. Werner [florianwerner@yahoo.com]

2

v.1.0
07/2011



Asplenium raddianum
ASPLENIACEAE



Asplenium raddianum
ASPLENIACEAE



Asplenium tricholepis
ASPLENIACEAE



Asplenium tricholepis
ASPLENIACEAE



Blechnum acutum
BLECHNACEAE



Blechnum acutum
BLECHNACEAE



Blechnum fragile
BLECHNACEAE



Blechnum fragile
BLECHNACEAE



Blechnum lehmannii
BLECHNACEAE



Blechnum lehmannii
BLECHNACEAE



Nephrolepis cordifolia
DAVALLIACEAE



Nephrolepis cordifolia
DAVALLIACEAE



Elaphoglossum antioquianum
DRYOPTERIDACEAE



Elaphoglossum antioquianum
DRYOPTERIDACEAE



Elaphoglossum argyrophyllum
DRYOPTERIDACEAE



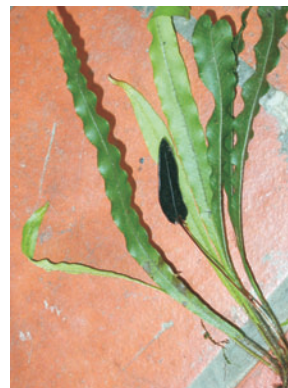
Elaphoglossum argyrophyllum
DRYOPTERIDACEAE



Elaphoglossum ciliatum
DRYOPTERIDACEAE



Elaphoglossum ciliatum
DRYOPTERIDACEAE



Elaphoglossum eximium
DRYOPTERIDACEAE



Elaphoglossum eximium
DRYOPTERIDACEAE

Epiphytic ferns and allies of Podocarpus Biosphere Reserve

Southeastern Ecuador, from moist forest at 2000-2500 m elevation

Florian A. Werner & Glenda Mendieta-Leiva

Functional Ecology, University of Oldenburg, Germany

Thanks to Alan R. Smith and Robbin C. Moran for identifications

Photos, production & copyright: G. Mendieta-Leiva [glendamendieta@gmail.com] & F. A. Werner [florianwerner@yahoo.com]

3

v.1.0
07/2011



Elaphoglossum elegantipes
DRYOPTERIDACEAE



Elaphoglossum elegantipes
DRYOPTERIDACEAE



Elaphoglossum cf. floccosum
DRYOPTERIDACEAE



Elaphoglossum cf. floccosum
DRYOPTERIDACEAE



Elaphoglossum guamanianum
DRYOPTERIDACEAE



Elaphoglossum guamanianum
DRYOPTERIDACEAE



Elaphoglossum hieronymi
DRYOPTERIDACEAE



Elaphoglossum hieronymi
DRYOPTERIDACEAE



Elaphoglossum muscosum
DRYOPTERIDACEAE



Elaphoglossum muscosum
DRYOPTERIDACEAE



Elaphoglossum lloense
DRYOPTERIDACEAE



Elaphoglossum lloense
DRYOPTERIDACEAE



Elaphoglossum nidiforme
DRYOPTERIDACEAE



E. peltatum fo. flabellatum
DRYOPTERIDACEAE



E. peltatum fo. peltatum
DRYOPTERIDACEAE



Elaphoglossum tenuiculum
DRYOPTERIDACEAE



Elaphoglossum tenuiculum
DRYOPTERIDACEAE



Elaphoglossum versatile
DRYOPTERIDACEAE



Elaphoglossum versatile
DRYOPTERIDACEAE



Elaphoglossum cf. vulcanicum
DRYOPTERIDACEAE

Epiphytic ferns and allies of Podocarpus Biosphere Reserve

Southeastern Ecuador, from moist forest at 2000-2500 m elevation

Florian A. Werner & Glenda Mendieta-Leiva

Functional Ecology, University of Oldenburg, Germany

Thanks to Alan R. Smith and Robbin C. Moran for identifications

Photos, production & copyright: G. Mendieta-Leiva [glendamendieta@gmail.com] & F. A. Werner [florianwerner@yahoo.com]

4

v.1.0
07/2011



Elaphoglossum cf. vulcanicum
DRYOPTERIDACEAE



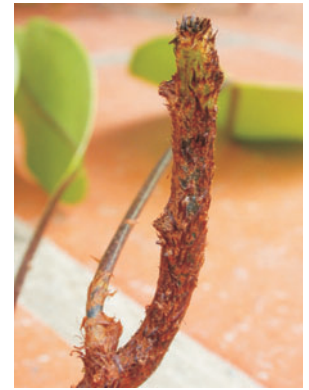
Elaphoglossum FW2085
DRYOPTERIDACEAE



Elaphoglossum FW2085
DRYOPTERIDACEAE



Elaphoglossum Fw2539
DRYOPTERIDACEAE



Elaphoglossum Fw2539
DRYOPTERIDACEAE



Elaphoglossum FW2422
DRYOPTERIDACEAE



Elaphoglossum FW2422
DRYOPTERIDACEAE



Polybotrya appressa
DRYOPTERIDACEAE



Polybotrya appressa
DRYOPTERIDACEAE



Polybotrya osmundaceae
DRYOPTERIDACEAE



Polybotrya osmundaceae
DRYOPTERIDACEAE



Polybotrya osmundaceae
DRYOPTERIDACEAE



Alansmia diaphana
GRAMMITIDACEAE



Alansmia diaphana
GRAMMITIDACEAE



Ascogrammitis loxensis
GRAMMITIDACEAE



Ascogrammitis loxensis
GRAMMITIDACEAE



Alansmia aff. *A. smithii*
GRAMMITIDACEAE



Alansmia aff. *A. smithii*
GRAMMITIDACEAE



Enterosora parietina
GRAMMITIDACEAE



Enterosora parietina
GRAMMITIDACEAE

Epiphytic ferns and allies of Podocarpus Biosphere Reserve

Southeastern Ecuador, from moist forest at 2000-2500 m elevation

Florian A. Werner & Glenda Mendieta-Leiva

Functional Ecology, University of Oldenburg, Germany

Thanks to Alan R. Smith and Robbin C. Moran for identifications

Photos, production & copyright: G. Mendieta-Leiva [glendamendieta@gmail.com] & F. A. Werner [florianwerner@yahoo.com]

5

v.1.0
07/2011



Ceradenia curvata
GRAMMITIDACEAE



Ceradenia curvata
GRAMMITIDACEAE



Ceradenia glabra vel. aff.
GRAMMITIDACEAE



Ceradenia glabra vel. aff.
GRAMMITIDACEAE



Ceradenia jurgenmanioides
GRAMMITIDACEAE



Ceradenia jurgenmanioides
GRAMMITIDACEAE



Ceradenia aff. major
GRAMMITIDACEAE



Ceradenia aff. major
GRAMMITIDACEAE



Ceradenia FW2891
GRAMMITIDACEAE



Ceradenia FW2891
GRAMMITIDACEAE



Cochlidium pumilum
GRAMMITIDACEAE



Cochlidium pumilum
GRAMMITIDACEAE



Cochlidium serrulatum
GRAMMITIDACEAE



Grammitis bryophila
GRAMMITIDACEAE



Grammitis bryophila
GRAMMITIDACEAE



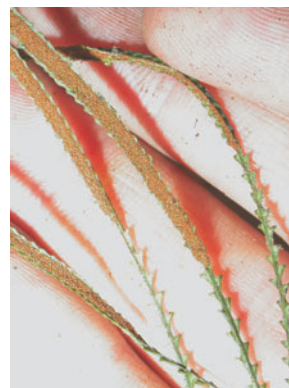
Lellingeria humilis
GRAMMITIDACEAE



Lellingeria humilis
GRAMMITIDACEAE



Lellingeria myosurioides
GRAMMITIDACEAE



Lellingeria myosurioides
GRAMMITIDACEAE



Lellingeria phlegmaria
GRAMMITIDACEAE

Epiphytic ferns and allies of Podocarpus Biosphere Reserve

Southeastern Ecuador, from moist forest at 2000-2500 m elevation

Florian A. Werner & Glenda Mendieta-Leiva

Functional Ecology, University of Oldenburg, Germany

Thanks to Alan R. Smith and Robbin C. Moran for identifications

Photos, production & copyright: G. Mendieta-Leiva [glendamendieta@gmail.com] & F. A. Werner [florianwerner@yahoo.com]

6

v.1.0
07/2011



Lellingeria phlegmaria
GRAMMITIDACEAE



Lellingeria subsessilis
GRAMMITIDACEAE



Lellingeria subsessilis
GRAMMITIDACEAE



Melpomene firma
GRAMMITIDACEAE



Melpomene firma
GRAMMITIDACEAE



Melpomene wolfii
GRAMMITIDACEAE



Melpomene wolfii
GRAMMITIDACEAE



Melpomene xiphopteroides
GRAMMITIDACEAE



Melpomene xiphopteroides
GRAMMITIDACEAE



Micropolipodium blepharolepis
GRAMMITIDACEAE



Micropolipodium truncicola
GRAMMITIDACEAE



Micropolipodium truncicola
GRAMMITIDACEAE



Micropolipodium truncicola
GRAMMITIDACEAE



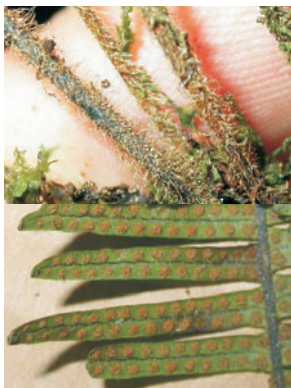
Micropolipodium cf. setulosum
GRAMMITIDACEAE



Micropolipodium cf. setulosum
GRAMMITIDACEAE



Mycopteris taxifolia
GRAMMITIDACEAE



Mycopteris taxifolia
GRAMMITIDACEAE



Terpsichore anfractuosa
GRAMMITIDACEAE



Terpsichore anfractuosa
GRAMMITIDACEAE



Terpsichore anfractuosa
GRAMMITIDACEAE

Epiphytic ferns and allies of Podocarpus Biosphere Reserve

Southeastern Ecuador, from moist forest at 2000-2500 m elevation

Florian A. Werner & Glenda Mendieta-Leiva

Functional Ecology, University of Oldenburg, Germany

Thanks to Alan R. Smith and Robbin C. Moran for identifications

Photos, production & copyright: G. Mendieta-Leiva [glendamendieta@gmail.com] & F. A. Werner [florianwerner@yahoo.com]

7

v.1.0
07/2011



Terpsichore asplenifolium
GRAMMITIDACEAE



Terpsichore asplenifolium
GRAMMITIDACEAE



Terpsichore chrysleri
GRAMMITIDACEAE



Terpsichore chrysleri
GRAMMITIDACEAE



Terpsichore elastica
GRAMMITIDACEAE



Terpsichore elastica
GRAMMITIDACEAE



Terpsichore lanigera
GRAMMITIDACEAE



Terpsichore lanigera
GRAMMITIDACEAE



Terpsichore senilis
GRAMMITIDACEAE



Terpsichore senilis
GRAMMITIDACEAE



Terpsichore vel. aff. taxifolia
GRAMMITIDACEAE



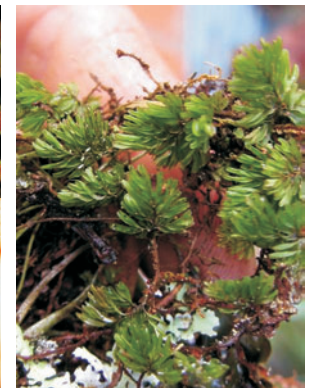
Terpsichore vel. aff. taxifolia
GRAMMITIDACEAE



Zygophlebia mathewsii
GRAMMITIDACEAE



Zygophlebia mathewsii
GRAMMITIDACEAE



Hymenophyllum brevistipes
HYMENOPHYLLACEAE



Hymenophyllum brevistipes
HYMENOPHYLLACEAE



Hymenophyllum elegans
HYMENOPHYLLACEAE



Hymenophyllum elegans
HYMENOPHYLLACEAE



Hymenophyllum crispum
HYMENOPHYLLACEAE



Hymenophyllum crispum
HYMENOPHYLLACEAE

Epiphytic ferns and allies of Podocarpus Biosphere Reserve

Southeastern Ecuador, from moist forest at 2000-2500 m elevation

Florian A. Werner & Glenda Mendieta-Leiva

Functional Ecology, University of Oldenburg, Germany

Thanks to Alan R. Smith and Robbin C. Moran for identifications

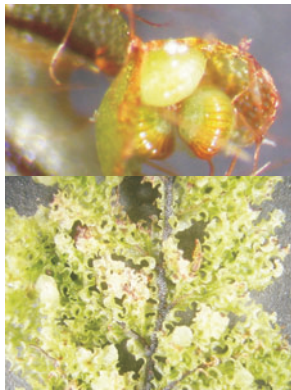
Photos, production & copyright: G. Mendieta-Leiva [glendamendieta@gmail.com] & F. A. Werner [florianwerner@yahoo.com]

8

v.1.0
07/2011



Hymenophyllum fendlerianum
HYMENOPHYLLACEAE



Hymenophyllum fendlerianum
HYMENOPHYLLACEAE



Hymenophyllum fucoides
HYMENOPHYLLACEAE



Hymenophyllum fucoides
HYMENOPHYLLACEAE



Hymenophyllum fucoides
HYMENOPHYLLACEAE



Hymenophyllum hirsutum
HYMENOPHYLLACEAE



Hymenophyllum jamesonii
HYMENOPHYLLACEAE



Hymenophyllum lobatoalatum
HYMENOPHYLLACEAE



Hymenophyllum lobatoalatum
HYMENOPHYLLACEAE



Hymenophyllum microcarpum
HYMENOPHYLLACEAE



Hymenophyllum microcarpum
HYMENOPHYLLACEAE



Hymenophyllum multialatum
HYMENOPHYLLACEAE



Hymenophyllum multialatum
HYMENOPHYLLACEAE



Hymenophyllum myriocarpum
HYMENOPHYLLACEAE



Hymenophyllum myriocarpum
HYMENOPHYLLACEAE



Hymenophyllum speciosum
HYMENOPHYLLACEAE



Hymenophyllum speciosum
HYMENOPHYLLACEAE



Hymenophyllum pedicellatum
HYMENOPHYLLACEAE



Hymenophyllum pedicellatum
HYMENOPHYLLACEAE



Hymenophyllum polyanthos
HYMENOPHYLLACEAE

Epiphytic ferns and allies of Podocarpus Biosphere Reserve

Southeastern Ecuador, from moist forest at 2000-2500 m elevation

Florian A. Werner & Glenda Mendieta-Leiva

Functional Ecology, University of Oldenburg, Germany

Thanks to Alan R. Smith and Robbin C. Moran for identifications

Photos, production & copyright: G. Mendieta-Leiva [glendamendieta@gmail.com] & F. A. Werner [florianwerner@yahoo.com]

9

v.1.0
07/2011



Hymenophyllum polyanthos
HYMENOPHYLLACEAE



Hymenophyllum ruizii
HYMENOPHYLLACEAE



Hymenophyllum trichophyllum
HYMENOPHYLLACEAE



Hymenophyllum trichophyllum
HYMENOPHYLLACEAE



Hymenophyllum trichomanoides
HYMENOPHYLLACEAE



Hymenophyllum trichomanoides
HYMENOPHYLLACEAE



Hymenophyllum undulatum
HYMENOPHYLLACEAE



Hymenophyllum Fw1374
HYMENOPHYLLACEAE



Trichomanes angustatum
HYMENOPHYLLACEAE



Trichomanes angustatum
HYMENOPHYLLACEAE



Trichomanes crinitum
HYMENOPHYLLACEAE



Trichomanes crinitum
HYMENOPHYLLACEAE



Trichomanes lucens
HYMENOPHYLLACEAE



Trichomanes lucens
HYMENOPHYLLACEAE



Trichomanes reptans
HYMENOPHYLLACEAE



Trichomanes reptans
HYMENOPHYLLACEAE



Campyloneurum angustifolium
POLYPODIACEAE



Campyloneurum angustifolium
POLYPODIACEAE



Campyloneurum angustifolium
POLYPODIACEAE



Campyloneurum anocarpus
POLYPODIACEAE

Epiphytic ferns and allies of Podocarpus Biosphere Reserve

Southeastern Ecuador, from moist forest at 2000-2500 m elevation

Florian A. Werner & Glenda Mendieta-Leiva

Functional Ecology, University of Oldenburg, Germany

Thanks to Alan R. Smith and Robbin C. Moran for identifications

Photos, production & copyright: G. Mendieta-Leiva [glendamendieta@gmail.com] & F. A. Werner [florianwerner@yahoo.com]

10

v.1.0
07/2011



Campyloneurum anocarpus
POLYPODIACEAE



Campyloneurum ophiocalum
POLYPODIACEAE



Campyloneurum ophiocalum
POLYPODIACEAE



Campyloneurum phyllitidis
POLYPODIACEAE



Campyloneurum phyllitidis
POLYPODIACEAE



Campyloneurum vulpinum
POLYPODIACEAE



Campyloneurum vulpinum
POLYPODIACEAE



Campyloneurum FW2913
POLYPODIACEAE



Campyloneurum FW2913
POLYPODIACEAE



Microgramma lycopodioides
POLYPODIACEAE



Microgramma lycopodioides
POLYPODIACEAE



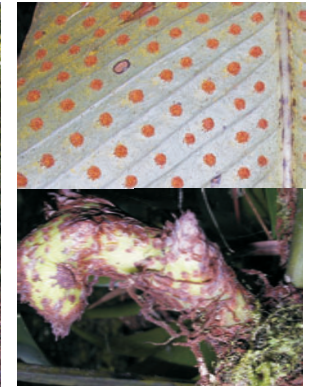
Microgramma percussa
POLYPODIACEAE



Microgramma percussa
POLYPODIACEAE



Niphidium crassifolium
POLYPODIACEAE



Niphidium crassifolium
POLYPODIACEAE



Pecluma divaricata
POLYPODIACEAE



Pecluma divaricata
POLYPODIACEAE



Pecluma eurybasis
POLYPODIACEAE



Pecluma eurybasis
POLYPODIACEAE



Phlebodium pseudoaureum
POLYPODIACEAE

Epiphytic ferns and allies of Podocarpus Biosphere Reserve

Southeastern Ecuador, from moist forest at 2000-2500 m elevation

Florian A. Werner & Glenda Mendieta-Leiva

Functional Ecology, University of Oldenburg, Germany

Thanks to Alan R. Smith and Robbin C. Moran for identifications

Photos, production & copyright: G. Mendieta-Leiva [glendamendieta@gmail.com] & F. A. Werner [florianwerner@yahoo.com]

v.1.0
07/2011



Plebodium pseudoaureum
POLYPODIACEAE



Plebodium pseudoaureum
POLYPODIACEAE



Pleopeltis fraseri
POLYPODIACEAE



Pleopeltis fraseri
POLYPODIACEAE



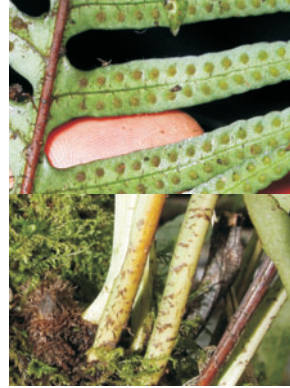
Pleopeltis macrocarpa
POLYPODIACEAE



Pleopeltis macrocarpa
POLYPODIACEAE



Pleopeltis remota
POLYPODIACEAE



Pleopeltis remota
POLYPODIACEAE



Serpocaulon coarctatum
POLYPODIACEAE



Serpocaulon coarctatum
POLYPODIACEAE



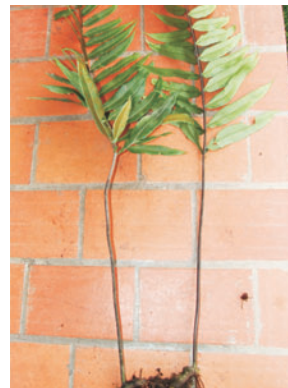
Serpocaulon fraxinifolium
POLYPODIACEAE



Serpocaulon intricatum
POLYPODIACEAE



Serpocaulon intricatum
POLYPODIACEAE



Serpocaulon giganteum
POLYPODIACEAE



Serpocaulon giganteum
POLYPODIACEAE



Serpocaulon laevigatum
POLYPODIACEAE



Serpocaulon lasiopus
POLYPODIACEAE



Serpocaulon lasiopus
POLYPODIACEAE



Serpocaulon latissimum
POLYPODIACEAE



Serpocaulon latissimum
POLYPODIACEAE

Epiphytic ferns and allies of Podocarpus Biosphere Reserve

Southeastern Ecuador, from moist forest at 2000-2500 m elevation

Florian A. Werner & Glenda Mendieta-Leiva

Functional Ecology, University of Oldenburg, Germany

Thanks to Alan R. Smith and Robbin C. Moran for identifications

Photos, production & copyright: G. Mendieta-Leiva [glendamendieta@gmail.com] & F. A. Werner [florianwerner@yahoo.com]

12

v.1.0
07/2011



Serpocaulon ptilorhizon
POLYPODIACEAE



Serpocaulon ptilorhizon
POLYPODIACEAE



Serpocaulon semipinnatifidum
POLYPODIACEAE



Serpocaulon semipinnatifidum
POLYPODIACEAE



Serpocaulon sessilifolium
POLYPODIACEAE



Serpocaulon sessilifolium
POLYPODIACEAE



Polytaenium brasilianum
VITTARIACEAE



Polytaenium brasilianum
VITTARIACEAE



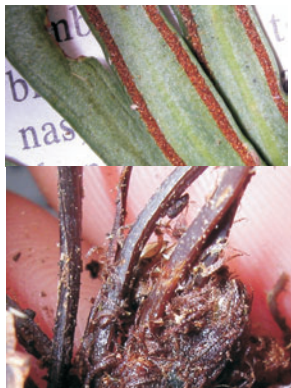
Polytaenium lineatum
VITTARIACEAE



Polytaenium lineatum
VITTARIACEAE



Radiovittaria gardneriana
VITTARIACEAE



Radiovittaria gardneriana
VITTARIACEAE



Radiovittaria gardneriana
VITTARIACEAE



Radiovittaria cf. latifolia
VITTARIACEAE



Radiovittaria cf. latifolia
VITTARIACEAE



Radiovittaria cf. latifolia
VITTARIACEAE



Radiovittaria remota
VITTARIACEAE



Radiovittaria remota
VITTARIACEAE



Vittaria graminifolia
VITTARIACEAE



Vittaria graminifolia
VITTARIACEAE