

Timbers used to build the slave house from Ponte Alta Farm,  
Rio de Janeiro (Brazil)

Veronica Maioli-Azevedo & Cátia Henriques Callado

Universidade do Estado do Rio de Janeiro

Fotos: Veronica Maioli Apoio: CAPES, CNPq e FAPERJ; e José Roberto Freitas e Jair Ferreira da Fazenda Ponte Alta.

© Veronica Maioli [vmaioli\_az@hotmail.com] e autores. Agradecimento ao Laboratório de Anatomia Estrutural do Jardim Botânico do Rio de Janeiro.

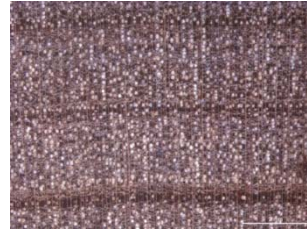
624 versão 1 06/2014



1 *Astronium* aff. *graveolens*  
Anacardiaceae



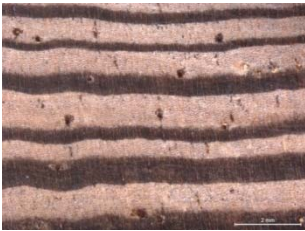
2 *Aspidosperma polyneuron*  
Apocynaceae



3 *Aspidosperma* sp. (2.0x)  
Apocynaceae



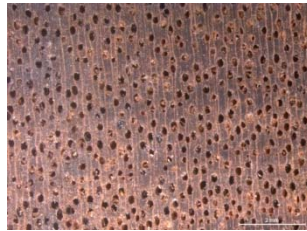
4 *Araucaria angustifolia*  
Araucariaceae



5 Arecaceae



6 *Buchenavia* sp.  
Combretaceae



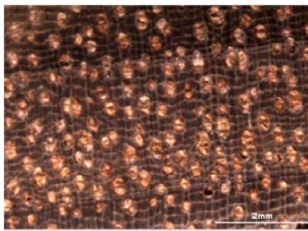
7 *Goupia glabra*  
Goupiaceae



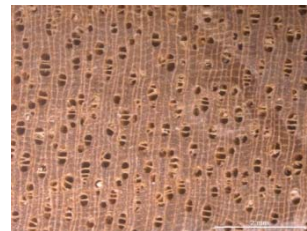
8 *Mezilaurus navalium*  
Lauraceae



9 *Bertholletia excelsa*  
Lecythidaceae



10 *Cariniana legalis*  
Lecythidaceae



11 *Cariniana* sp.  
Lecythidaceae



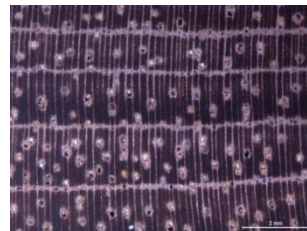
12 *Eschweilera* sp.  
Lecythidaceae



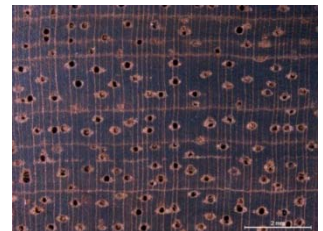
13 *Lecythis pisonis*  
Lecythidaceae



14 *Tachigali* sp.  
Leguminosae-  
Caesalpinioideae



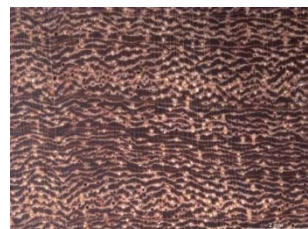
15 *Copaifera* aff. *trapezifolia*  
Leguminosae-  
Caesalpinioideae



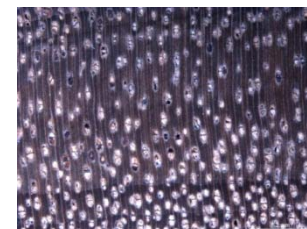
16 *Hymenaea courbaril*  
Leguminosae-  
Caesalpinioideae



17 *Melanoxylon braúna*  
Leguminosae-  
Caesalpinioideae



18 *Apuleia leiocarpa*  
Leguminosae-  
Caesalpinioideae



19 *Piptadenia* sp.  
Leguminosae-  
Mimosoideae



20 *Myroxylon peruiferum*  
Leguminosae-  
Papilionoideae



Timbers from the Atlantic Forest used at the slave house from Ponte  
Alta Farm, Rio de Janeiro (Brazil)

Veronica Maioli-Azevedo & Cátia Henriques Callado

Universidade do Estado do Rio de Janeiro

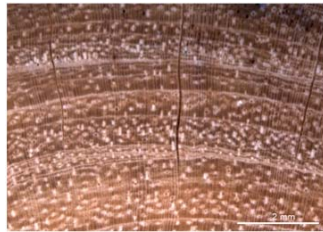
Fotos: Veronica Maioli . Apoio: CAPES, CNPq e FAPERJ; e José Roberto Freitas e Jair Ferreira da Fazenda Ponte Alta.

© Veronica Maioli [vmaioli\_az@hotmail.com] e autores. Agradecimento ao Laboratório de Anatomia Estrutural do Jardim Botânico do Rio de Janeiro.

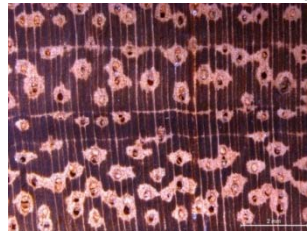
624 versão 1 06/2014



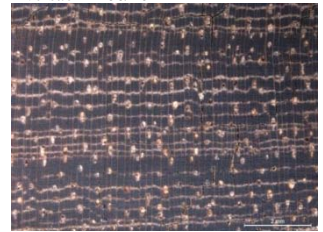
21 *Bowdichia virgilioides*  
Leguminosae-Papilionoideae



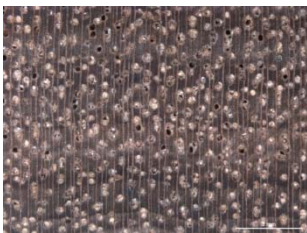
22 *Machaerium pedicellatum*  
Leguminosae-Papilionoideae



23 *Platycyamus regnellii*  
Leguminosae-Papilionoideae



24 *Clarisia racemosa*  
Moraceae



25 *Eucalyptus* sp.  
Myrtaceae



26 *Ramisia brasiliensis*  
Nyctaginaceae



27 *Chrysophyllum* sp.1  
(2.0x) Sapotaceae



28 *Chrysophyllum* sp.2  
Sapotaceae



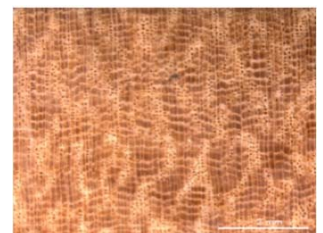
29 *Manilkara* sp.1  
Sapotaceae



30 *Manilkara* sp.2  
Sapotaceae



31 *Pouteria* sp.  
Sapotaceae



32 *Sideroxylon obtusifolium*  
Sapotaceae



33 *Erisma* sp.  
Vochysiaceae



34 *Caryocar* sp.  
Caryocaraceae



35 Vista de uma parte da senzala.



36 Vista dos fundos da Fazenda Ponte Alta com a senzala em primeiro plano.

