

# Botanical Garden of the Federal University of Juiz de Fora, Minas Gerais, Brazil **1**

## SOCIAL WASPS

Bruno Corrêa **Barbosa**, Tatiane Tagliatti **Maciel**, Mariana **Paschoalini**, Fábio **Prezoto**  
Laboratório de Ecologia Comportamental e Bioacústica – LABEC, Universidade Federal de Juiz de Fora, Juiz de Fora, Minas Gerais, Brazil

Photos: Bruno Corrêa Barbosa (Bruno CBarbosa). Produced by: Bruno Corrêa Barbosa, with support from Mariana Paschoalini, Tatiane Tagliatti Maciel and Fábio Prezoto, and The Field Museum.  
© Bruno Corrêa Barbosa [barbosa.bc@outlook.com] Thanks to: Universidade Federal de Juiz de Fora.

[fieldguides.fieldmuseum.org] [726] version 1 03/2016

This guide is the result of the collaborative line of research conducted by Laboratório de Ecologia Comportamental e Bioacústica de Juiz de Fora (LABEC), which includes Biology, Ecology and Behavior of Social Wasps. The species represented here were recorded for the project "Social Wasps, Botanical Garden of Federal University of Juiz de Fora: Richness, Forest Stratification and Nesting Habits," which began in 2011 and is still in progress. To date, the project results include the fifth largest diversity of social wasps in the state of Minas Gerais and three new records of species for the state, which further highlights the importance of the project and study area, since it is an urban fragment. The project made possible to carry out some studies of interaction networks as well, where a nesting trend of social wasps in exotic plants was recorded. These results offer support for the preparation of a new project entitled "Behavioral Ecology in Interface Wasp-Plant-Herbivore on Urban Fragment," which began in 2015 and aims to investigate the factors that contribute or limit this trend



**1** *Agelaia multipicta*  
Vespidae: Epiponini



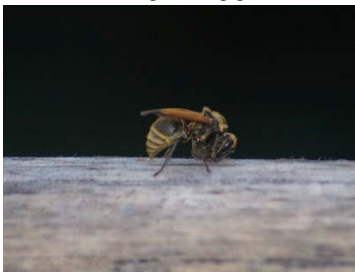
**2** *Agelaia vicina*  
Vespidae: Epiponini



**3** *Apoica pallens*  
Vespidae: Epiponini



**4** *Brachygastra augusti*  
Vespidae: Epiponini



**5** *Brachygastra lecheguana*  
Vespidae: Epiponini



**6** *Mischocyttarus araujoii*  
Vespidae: Mischocyttarini



**7** *Mischocyttarus cassununga*  
Vespidae: Mischocyttarini



**8** *Mischocyttarus drewseni*  
Vespidae: Mischocyttarini



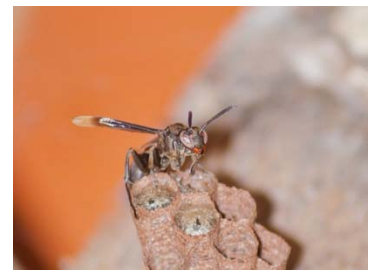
**9** *Mischocyttarus flavosculentatus*  
Vespidae: Mischocyttarini



**10** *Mischocyttarus iheringi*  
Vespidae: Mischocyttarini



**11** *Mischocyttarus rotundicollis*  
Vespidae: Mischocyttarini



**12** *Mischocyttarus socialis*  
Vespidae: Mischocyttarini



**13** *Mischocyttarus wagneri*  
Vespidae: Mischocyttarini



**14** *Parachartergus fraternus*  
Vespidae: Epiponini



**15** *Polistes actaeon*  
Vespidae: Polistini



**16** *Polistes cinerascens*  
Vespidae: Polistini

# Botanical Garden of the Federal University of Juiz de Fora, Minas Gerais, Brazil **2**

## SOCIAL WASPS

Bruno Corrêa **Barbosa**, Tatiane Tagliatti **Maciel**, Mariana **Paschoalini**, Fábio **Prezoto**  
Laboratório de Ecologia Comportamental e Bioacústica – LABEC, Universidade Federal de Juiz de Fora, Juiz de Fora, Minas Gerais, Brazil

Photos: Bruno Corrêa Barbosa (Bruno CBarbosa). Produced by: Bruno Corrêa Barbosa, with support from Mariana Paschoalini, Tatiane Tagliatti Maciel, Fábio Prezoto, and The Field Museum.  
© Bruno Corrêa Barbosa [barbosa.bc@outlook.com] Thanks to: Universidade Federal de Juiz de Fora.

[fieldguides.fieldmuseum.org] [726] version 1 03/2016



17 *Polistes pacificus*  
Vespidae: Polistini



18 *Polistes similimus*  
Vespidae: Polistini



19 *Polistes versicolor*  
Vespidae: Polistini



20 *Polybia bifacata*  
Vespidae: Epiponini



21 *Polybia fastidiosuscula*  
Vespidae: Epiponini



22 *Polybia ignobilis*  
Vespidae: Epiponini



23 *Polybia jurinei*  
Vespidae: Epiponini



24 *Polybia liliacea*  
Vespidae: Epiponini



25 *Polybia lugubris*  
Vespidae: Epiponini



26 *Polybia occidentales*  
Vespidae: Epiponini



27 *Polybia platycephala*  
Vespidae: Epiponini



28 *Polybia scutellaris*  
Vespidae: Epiponini



29 *Polybia sericea*  
Vespidae: Epiponini



30 *Polybia striata*  
Vespidae: Epiponini



31 *Polybia paulista*  
Vespidae: Epiponini



32 *Polybia chrysothorax*  
Vespidae: Epiponini



33 *Protonectarina sylveirae*  
Vespidae: Epiponini



34 *Protopolybia exigua*  
Vespidae: Epiponini



35 *Protopolybia sedula*  
Vespidae: Epiponini



36 *Synoeca cyanea*  
Vespidae: Epiponini