

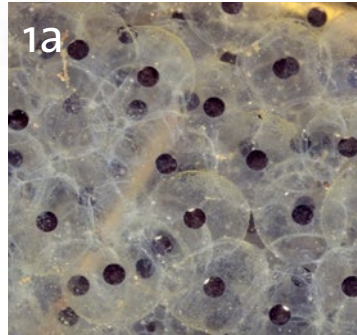
Amphibians of the Chicago Wilderness Region

EGGS OF SOME COMMON SPECIES

1. WOOD FROG

Lithobates sylvaticus

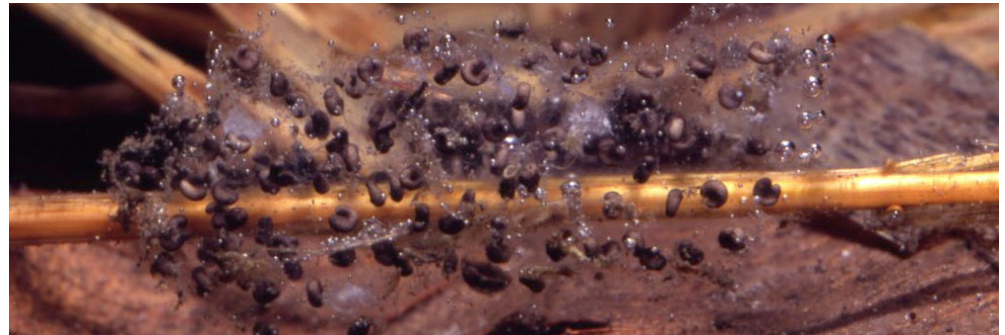
Globular clusters of 300–900 eggs, often many clusters massed together. Attached to submerged plants near water surface.



2. WESTERN CHORUS FROG

Pseudacris triseriata

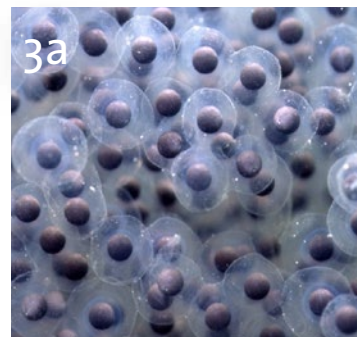
Small, cylindrical clusters (1–4 cm across) of 20–100 eggs, attached to sticks and leaf petioles 8–20 cm under water.



3. NORTHERN LEOPARD FROG

Lithobates pipiens

A tight, globular mass about 10–15 cm in diameter, laid a few centimeters under water and attached to vegetation. Contains up to 6000 eggs.



4. AMERICAN TOAD

Anaxyrus americanus

Long, linear strings of black eggs. Wrapped around vegetation or floating on water surface.



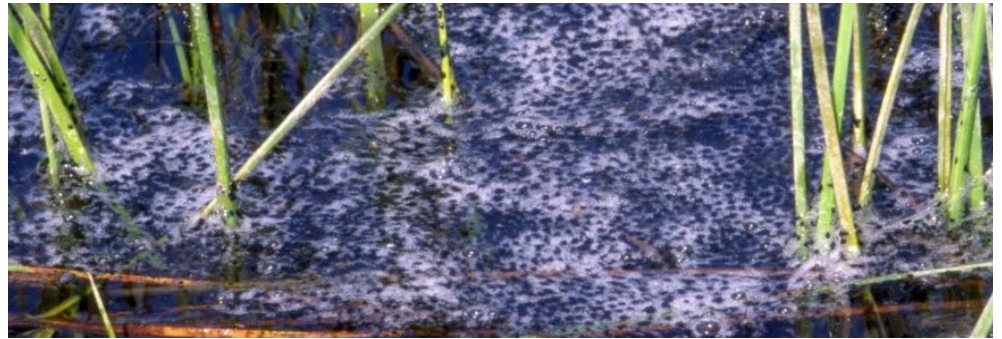
Amphibians of the Chicago Wilderness Region

EGGS OF SOME COMMON SPECIES

5. BULLFROG

Lithobates catesbeiana

Huge masses of 1000–5000 eggs, floating on water surface.



6. BLUE-SPOTTED SALAMANDER

Ambystoma laterale

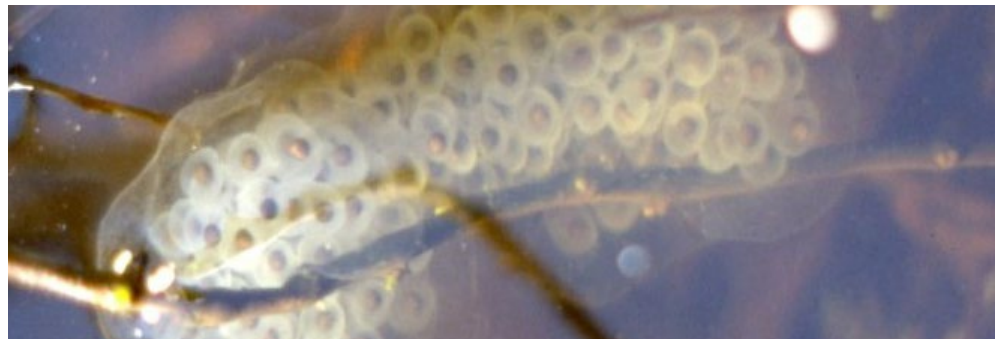
Laid singly or in clusters of up to 4 eggs on edges of leaves and other debris on pond bottom.



7. SPOTTED SALAMANDER

Ambystoma maculatum

Dense, gelatinous masses of up to 200 eggs, attached to edges of leaves, twigs, and other debris on pond bottom.



8. TIGER SALAMANDER

Ambystoma tigrinum

Clusters of 20–50, attached to twigs, leaves, and plant stems under water.



Photos by Mike Redmer

Produced by: John Balaban (North Branch Restoration Project), Karen Glennemeier (Shedd Aquarium), and Laura Milkert (The Field Museum)
© Science and Education, The Field Museum, Chicago, IL 60605 USA

Sources:

1. Field Guide to Amphibians and Reptiles of Illinois, by Phillips, Brandon, and Moll.
2. Tadpole identification table <https://www.trentu.ca/biology/berrill/identificationTable.htm>
Field guide 906 | fieldguides.fieldmuseum.org | Updated 1/19/2018

9. WOOD FROG*Lithobates sylvaticus*

Body is brown with gold speckles. Tail fin mottled. Eyes toward the top of the head.

**10. WESTERN CHORUS FROG***Pseudacris triseriata*

Body is dark with gold speckles. Tail fin is unicolored or clear with small black dots. Eyes on the sides of the head.

**11. SPRING PEEPER***Pseudacris crucifer*

Light brown with gold speckles. Eyes on the sides of the head. Tail fin blotched, with a clear area next to the tail muscle.

**12. NORTHERN LEOPARD FROG***Lithobates pipiens*

Light brown in color with clear tail fin. Occasional light-colored dots on tail fin.



Amphibians of the Chicago Wilderness Region

TADPOLES & LARVAE OF SOME COMMON SPECIES

13. PICKEREL FROG

Lithobates palustris

Purplish-black with light spots.
Tail fin is highly arched and
uniformly speckled.



14. AMERICAN TOAD

Anaxyrus americanus

Black in color with little or no mottling.
Small size, less than one inch snout to
tail tip.



15. GRAY TREE FROG

Hyla versicolor

Wide, highly arched tail fins with
bold red-orange and black coloration.



16. COPE'S GRAY TREE FROG

Hyla chrysoscelis

Indistinguishable from
Hyla versicolor tadpole.



9. CRICKET FROG*Acris crepitans*

Distinctive black tip at the end of tail.

**10. GREEN FROG***Lithobates clamitans*

Very large, up to several inches snout to tail tip. Light brown and covered with blotchy, uneven black spots.

**11. BULLFROG***Lithobates catesbeiana***Early stage coloration:** dark body, blotched with iridescent gold blotches. Tail clear or light-colored.**Mid-stage coloration:** tail covered with small, evenly scattered black dots.**Late stage coloration:** very large, up to several inches snout to tail tip. Light brown and covered with small, evenly scattered black dots.

**12. BLUE-SPOTTED
SALAMANDER***Ambystoma laterale*

Dark brown with yellowish blotches on back and a yellow stripe on sides.

**13. TIGER SALAMANDER***Ambystoma tigrinum*

Wide head and pale underside.

**14. SPOTTED SALAMANDER***Ambystoma maculatum*

Pale belly with mottled tail fin.

